



8/33 Newling Street, Lisarow

Single Level Easy-Care Home

Conveniently located in the suburb of Lisarow sits this 2 bedroom villa that is ideal for investors, first home buyers or downsizers.

Positioned at the rear of the well maintained complex and offering a light filled floor plan, the property features:

- Open plan living comprising of kitchen, lounge and dining with reverse cycle air conditioning and ceiling fan
- Functional kitchen with gas cooktop, ample bench and cupboard space
- Bathroom with bathtub and separate toilet
- Two bedrooms with built in robes, main with ceiling fan
- Separate laundry room with second toilet
- Low maintenance, fully fenced backyard
- Single garage with internal access

The property is positioned for ultimate convenience, with great schools and bus stop close by. Also being a short drive to local train stations, Lisarow shopping plaza, medical facilities and Gosford CBD. Those needing to commute will appreciate the close proximity to the M1 Motorway with easy access to Sydney and Newcastle.

For more information, contact Nicholas Cusick 0419 436 679.

2 1 1

FOR SALE
Contact Agent

AGENTS

Nicholas Cusick
0419 436 679
ncusick.gosford@ljhooker.com.au

Mark Whybrow
0412 994 707
mwhybrow.lisarow@ljhooker.com.au

AGENCY

LJ Hooker East Gosford
(02) 4322 5522

All information contained therein is gathered from relevant third parties sources.
We cannot guarantee or give any warranty about the information provided.
Interested parties must rely solely on their own enquiries.

LJ Hooker

Strata Levies: \$680pq approx.
Council Rates: \$1,169.60pa approx.
Water Rates: \$1,073.29pa approx. + usage

MORE DETAILS

Property ID 85WGQR
Property Type Villa
Including Close to Schools
Close to Shops
Close to Transport

Nicholas Cusick 0419 436 679

Company Principal - Licensee in Charge |
ncusick.gosford@ljhooker.com.au

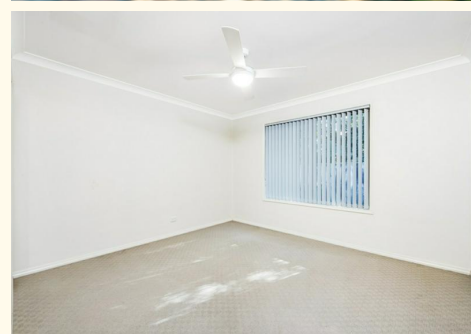
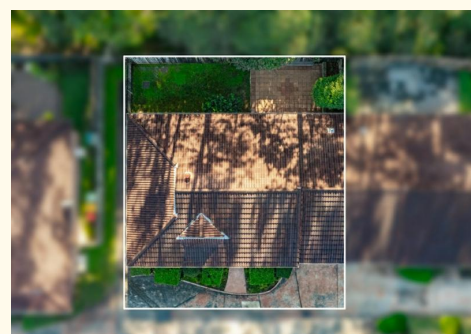
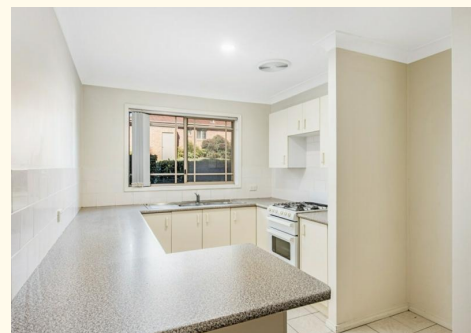
Mark Whybrow 0412 994 707

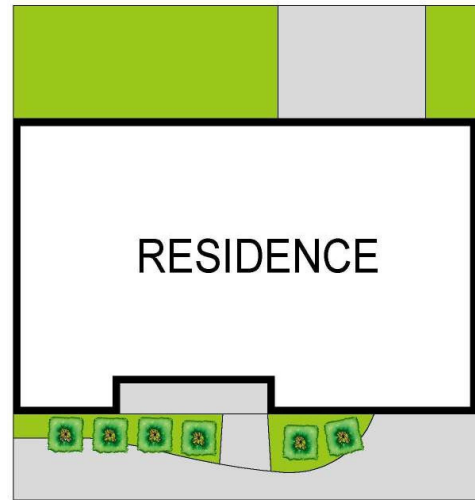
Licensed Real Estate Agent | Director Whybrow Real Estate Pty Ltd |
mwhybrow.lisarow@ljhooker.com.au

LJ Hooker East Gosford (02) 4322 5522

Suite 5 & 6 Victoria Court, 36-40 Victoria Street, EAST GOSFORD
NSW 2250

eastgosford.ljhooker.com.au | eastgosford@ljhooker.com.au





Scale in metres. Indicative only. Dimensions are approximate. All information contained herein is gathered from sources we believe to be reliable. However we cannot guarantee its accuracy and interested persons should rely on their own enquiries.

INT : 88m²
GARAGE : 23m²

8/33 Newling Street, Lisarow