




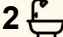
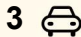
Villa 2/4 Pauls Road, Lindisfarne

Modern living | Private setting | Excellent Investment opportunity

Built in 2020 and positioned privately at the rear of a quiet cul-de-sac, this modern standalone villa combines comfort, smart design, and low-maintenance living: ideal for first-home buyers, downsizers, or astute investors.

Property Highlights:

- Modern standalone villa offering privacy and easy living
- Contemporary design with open-plan kitchen, dining, and living spaces
- Well-appointed U-shaped kitchen with quality appliances and breakfast bar
- Three bedrooms, all with built-in robes (master with ensuite)
- Main bathroom with separate shower, bath, and vanity
- 5.5kW solar system for energy efficiency and lower running costs
- Daikin heat pump, double-glazed windows, and LED lighting throughout
- Single garage with internal/external access and laundry space
- Private courtyard and minimal-maintenance backyard
- Peaceful location close to Tas TAFE and Eastlands Shopping Centre

3  2  3 

FOR SALE

Please Call

AGENTS

Nitin Joshi
0452 106 293
njoshi@ljhpinnacle.com.au

AGENCY

LJ Hooker Pinnacle Property
(03) 6272 8177

All information contained therein is gathered from relevant third parties sources.
We cannot guarantee or give any warranty about the information provided.
Interested parties must rely solely on their own enquiries.

 **LJ Hooker**

Investment Appeal:

Rental Appraisal: \$650-\$690 per week

Excellent yield potential and strong rental demand in a highly sought-after area

Stylish, sustainable, and superbly located - this villa offers the perfect balance of lifestyle and investment opportunity in Lindisfarne.

For presentation purposes, certain rooms have been digitally furnished to showcase how the space can be utilised.

The information contained herein has been supplied to us and we have no reason to doubt its accuracy, however, cannot guarantee it. Accordingly, all interested parties should make their own enquiries to verify this information.

MORE DETAILS

Property ID	BWJ1F
Property Type	Villa
House Size	112 m2
Land Area	335 m2
Including	Ensuite Air Conditioning Courtyard Dishwasher Outdoor Entertaining Built-in-Robes Secure Parking Fully Fenced Solar Panels

Nitin Joshi 0452 106 293

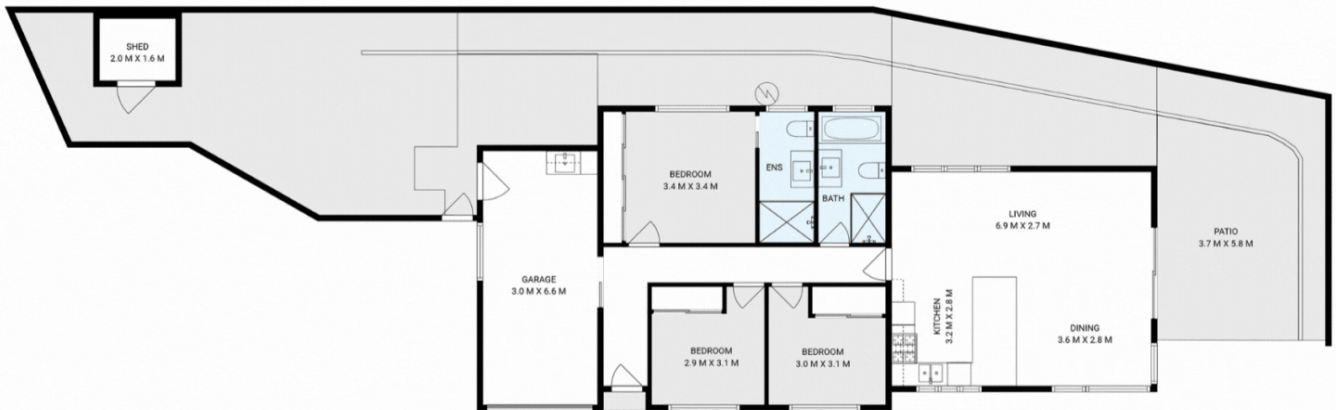
Property Representative | njoshi@ljhpinnacle.com.au

LJ Hooker Pinnacle Property (03) 6272 8177

402 Main Road, GLENORCHY TAS 7010

pinnacleproperty.ljhooker.com.au | hello@ljhpinnacle.com.au





2/4 Pauls Road, Lindisfarne

House area: 112 sqm

Areas and dimensions are approximate and therefore this floor plan should only be used for illustrative purposes.

Real Estate Marketing by nextcreative.com.au

