



35 Wassell Place, Lindisfarne

Lindisfarne - Five Bedrooms. Two Levels. No Compromises.

Ant's "Fluff-Free" Description...

- Genuine family scale - two full levels, five proper bedrooms and three full bathrooms, so weekday mornings don't become a contact sport.
- Light-filled main living - signature curved lounge with architectural flair that still feels liveable, flowing straight to a wide balcony for easy entertaining and sunset sessions.
- A kitchen that actually works - central to the action with a sensible work triangle, breakfast bench, dishwasher and solid storage, with an easy hand-off to the dining zone.
- Master suite done right - king-sized, walk-in robe, ensuite, and quietly positioned away from the main buzz so Sunday sleep-ins are back in play.
- Bedroom layout that makes sense - three upstairs with built-ins for

5 🏠 3 🚿 2 🚗

FOR SALE
Offers Over \$845,000

AGENTS

Ant Manton
0408 621 856
antmanton@ljhookerpinnacle.com

Anna Holmes
(03) 6272 8177
aholmes@ljhpinnacle.com.au

AGENCY

LJ Hooker Pinnacle Property
(03) 6272 8177

All information contained therein is gathered from relevant third parties sources.
We cannot guarantee or give any warranty about the information provided.
Interested parties must rely solely on their own enquiries.

 **LJ Hooker**

kids' gear, two downstairs ideal for teens, guests or that hobby you swear won't take over.

- Second living = sanity - generous lower-ground retreat that handles a full sofa setup, study desk and games zone, with direct outdoor access so the noise can escape when required.
- Outdoor options for every mood - balcony for a quiet pinot, entertainers deck for the loud BBQ crew.
- Laundry and storage that earn their keep - a real laundry, proper linen press and a dedicated storage room so the vacuum, camping gear and Christmas boxes all have a home.
- Flexible spaces throughout - easy work-from-home or homework nooks without sacrificing bedroom numbers.
- Planning and services sorted - General Residential zoning and standard Lindisfarne services make future tweaks and upgrades straightforward, subject to approvals.
- Leafy, elevated setting - established trees, lawn and room to landscape, add veggie beds, a trampoline, or let the dog do laps.
- Everyday convenience nailed - minutes to Lindisfarne Village, Rosny and the bridge, with schools and sport close by so the weekly run-around stays efficient.
- Low-drama practicality - bathrooms where you need them, logical circulation, and excellent separation between levels so movies and homework can quietly coexist.

Yes, it needs a bit of love and a run with the paint roller - but with this scale, layout and position, the upside is obvious.

Onwards and upwards to your Lindisfarne family mansion.

I Work Harder - It's THAT Simple!

Disclaimer: The information contained herein has been supplied to us and we have no reason to doubt its accuracy, however, cannot guarantee it. Accordingly, all interested parties should make their own enquiries to verify this information.

MORE DETAILS

Property ID	CZJ1F
Property Type	House
House Size	261 m2
Land Area	1275 m2
Including	Ensuite
	Air Conditioning
	Toilets (3)
	Balcony
	Deck
	Dishwasher
	Outdoor Entertaining
	Built-in-Robes

Ant Manton 0408 621 856

Real Estate Agent | antmanton@ljhookerpinnacle.com

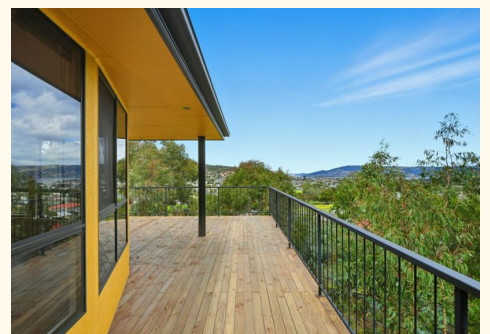
Anna Holmes (03) 6272 8177

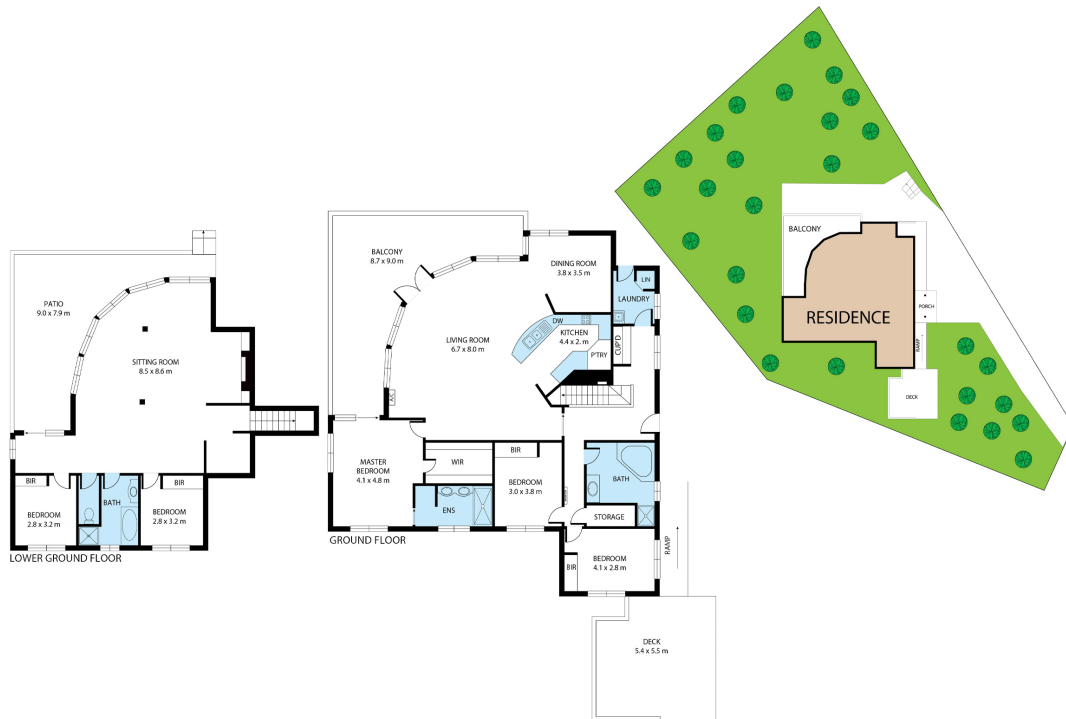
Executive Assistant to Ant Manton | aholmes@ljhpinnacle.com.au

LJ Hooker Pinnacle Property (03) 6272 8177

402 Main Road, GLENORCHY TAS 7010

pinnacleproperty.ljhooker.com.au | hello@ljhpinnacle.com.au





35 Wassell Place, Lindisfarne

House area: 261 sqm

Areas and dimensions are approximate and therefore this floor plan should only be used for illustrative purposes.

Real Estate Marketing by nextcreative.com.au

