

15 Henley Street, Lindisfarne

Lindisfarne - First Home Favourite with a Fresh Polish and a Whole Lot of Potential!

Ant's "Fluff-Free" Description...

If you're chasing charm, sunlight, and a Lindisfarne address without the eye-watering price tag - this little ripper is ready and waiting.

Whether you're starting out, slowing down, or looking to build your portfolio, this one's got the goods (and freshly polished floorboards to prove it).

Here's what you'll love:

- New Kitchen with great bench space - neat, tidy, and ready to feed the troops
- Three well-sized bedrooms - bring the beds and your Pinterest board
- Original bathroom - perfectly functional but ready for your personal flair (and a Bunnings trip or two)
- Separate laundry - because who wants a washing machine in the bathroom?
- Bright and spacious living zone - filled with natural light and freshly

All information contained therein is gathered from relevant third parties sources. We cannot guarantee or give any warranty about the information provided. Interested parties must rely solely on their own enquiries.

3 1 3

FOR SALE
Offers Over \$675,000

AGENTS
Ant Manton
0408 621 856
antmanton@ljhookerpinnacle.com

Anna Holmes
(03) 6272 8177
aholmes@ljhpinnacle.com.au

AGENCY
LJ Hooker Pinnacle Property
(03) 6272 8177

LJ Hooker

- polished timber floors that shine brighter than your future here
- Open-plan dining area - perfect for midweek dinners or weekend wine nights
- Big garage under the house (5.6m x 5.4m) - secure parking, storage, or that man cave/she shed you've been dreaming about
- Private backyard - includes a patio, shed, clothesline and a sweet outdoor seating area
- Established gardens and a lovely leafy block - a suburban oasis with minimal mowing required
- Off-street parking - plenty of room for your party guests!

The Location? On Point.

- Peaceful and elevated Lindisfarne position
- Close to schools and with public transport pretty much at your doorstep
- Quick access to shops, caf/u-3? schools and the waterfront walking track
- Under 10 minutes to Hobart CBD - your city commute just got cut in half

Whether you're keen to move straight in, rent it out, or add some value over time - this one's the whole package (and no, you're not dreaming).

Call now, inspect fast, and lock it in - before someone else beats you to it!

Onwards and upwards to your Lindisfarne starter pack!

"I Work Harder - It's THAT Simple!"

Disclaimer: The information contained herein has been supplied to us and we have no reason to doubt its accuracy, however, cannot guarantee it. Accordingly, all interested parties should make their own enquiries to verify this information.

MORE DETAILS

Property ID	91J1F
Property Type	House
House Size	106 m2
Land Area	612 m2
Including	Air Conditioning Toilets (1) Courtyard Floorboards Secure Parking Fully Fenced

Ant Manton 0408 621 856

Real Estate Agent | antmanton@ljhookerpinnacle.com

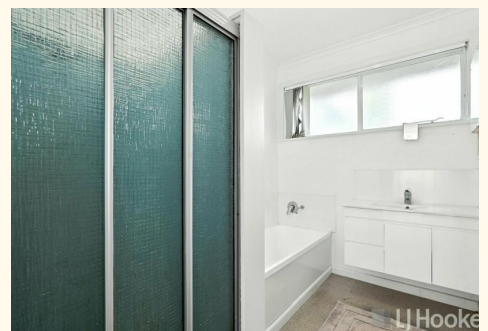
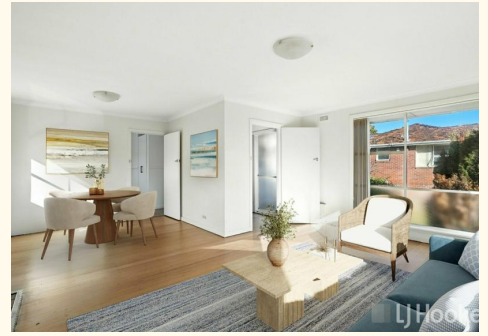
Anna Holmes (03) 6272 8177

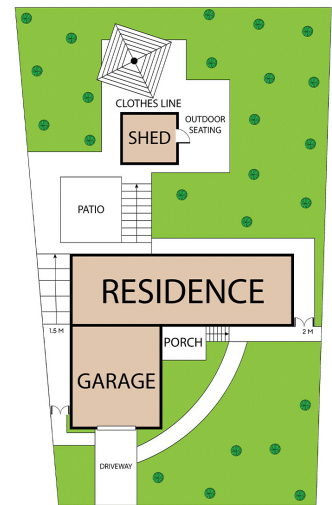
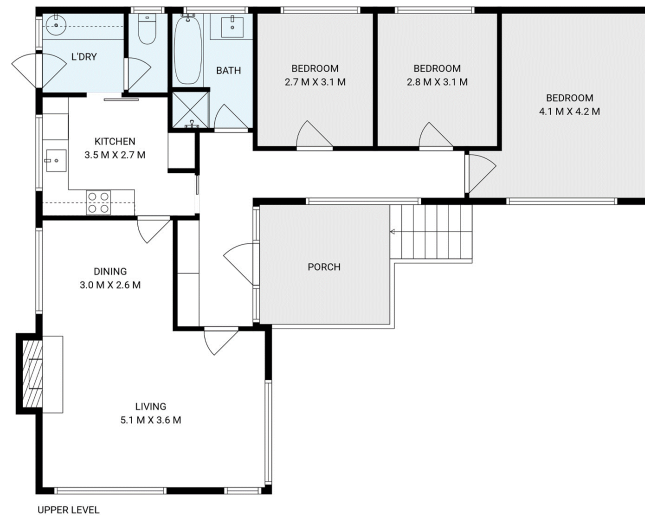
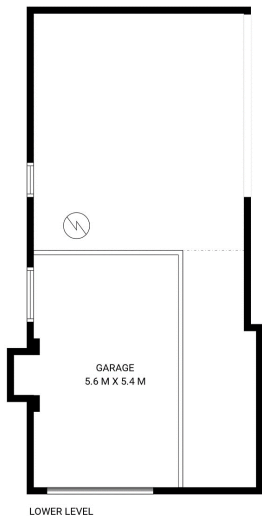
Executive Assistant to Ant Manton | aholmes@ljhpinnacle.com.au

LJ Hooker Pinnacle Property (03) 6272 8177

402 Main Road, GLENORCHY TAS 7010

pinnacleproperty.ljhooker.com.au | hello@ljhpinnacle.com.au





15 Henley Street, Lindisfarne

House area: 106 sqm

Areas and dimensions are approximate and therefore this floor plan should only be used for illustrative purposes.

Real Estate Marketing by nextcreative.com.au

