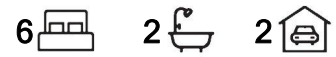


Linden Park, 7 Devereux Road

Sold by Marie Brus & Claude Buccella of LJ Hooker Adelaide Metro



For Sale
Contact Agent

View
ljhooker.com.au/2CHYFDZ

Contact
Marie Brus
0418 844 502
marie.brus@ljhadelaidemetro.com.au
Claude Buccella
0419 394 110
claudette.buccella@ljhadelaidemetro.com.au

Sold by Marie Brus & Claude Buccella of LJ Hooker Adelaide Metro

Situated on a generous 694sqm allotment with a 21.03m frontage in a tightly held eastern suburb. This circa 1948 residence comprises up to 6 bedrooms, formal lounge and dining rooms and 2 bathrooms. The updated kitchen with dishwasher overlooks the adjacent family/meals area and leads out to the rear garden.

Zoned for highly sought after Linden Park Primary and Glenunga International High School and easy access to numerous private schools. Spoilt for choice with numerous eateries and Burnside Village within walking distance. Public transport offers a quick commute into the city.

An exciting opportunity not to be missed.



LJ Hooker St Peters
(08) 8362 8008

Disclaimer: All information contained therein is gathered from relevant third parties sources. We cannot guarantee or give any warranty about the information provided. Interested parties must rely solely on their own enquiries.

Purchasing this property as an investment? Talk with Kirsty Clark from our PM team and see why our Property Management department is #1 amongst all the LJ Hooker offices Worldwide.

** All information provided has been obtained from sources we believe to be accurate, however, we cannot guarantee the information is accurate and we accept no liability for any errors or omissions (including but not limited to a property's land size, floor plans and size, building age and condition). Interested parties should make their own enquiries and obtain their own legal advice.

Should this property be scheduled for auction, the Vendor's Statement (Form 1) will be available at the LJ Hooker St Peters office for 3 consecutive business days immediately preceding the auction and at the auction for 30 minutes before it starts.

RLA 61345 RLA 282965 RLA 231015

More About this Property

Property ID	2CHYFDZ
Property Type	House
Land Area	694 m ²

Marie Brus 0418 844 502

Sales Consultant | marie.brus@ljhadelaidemetro.com.au

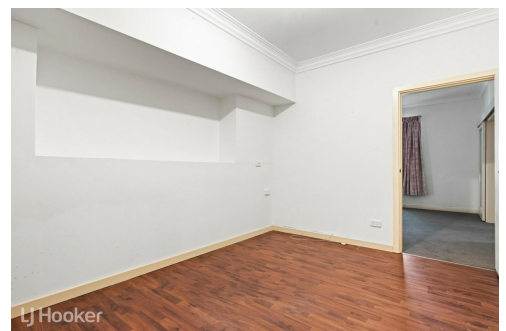
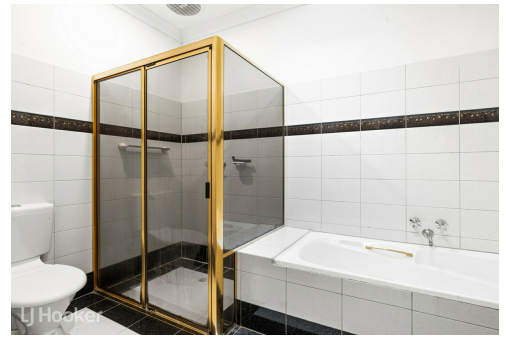
Claude Buccella 0419 394 110

Principal | claudio.buccella@ljhadelaidemetro.com.au

LJ Hooker St Peters (08) 8362 8008

2a Portrush Road, PAYNEHAM SA 5070

stpeters.ljhooker.com.au | stpeters@ljhadelaidemetro.com.au



Disclaimer: All information contained therein is gathered from relevant third parties sources. We cannot guarantee or give any warranty about the information provided. Interested parties must rely solely on their own enquiries.

LJ Hooker St Peters
(08) 8362 8008



- Ground Floor - 211m²
- First Floor - 26m²
- Garage/Shed/Store - 36m²
- Total - 273m²

Measurements are approximate

7 Devereux Road, Linden Park, SA 5065

Disclaimer: The information & figures obtained within this document has been compiled from information provided by vendor & sources that we believe are reliable. No warranty is given to their accuracy & all figures are subject to change without notice.