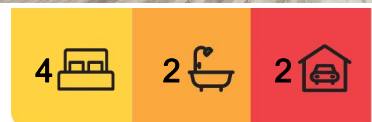


Lilydale, Lot 34 Janson Place

BIG, BRIGHT & BEAUTIFUL

This 'brand new' family home combining spacious living opening to outdoor al fresco entertaining plus a media/theatre room with 4 bedrooms, 2 big bathrooms, well fitted kitchen with walk in pantry, dishwasher & caesarstone benchtops, Rinnai zoned ducted reverse cycle heating & cooling, quality fixtures & fitting, double garage & landscaped garden. All with a most convenient location at Wynnlea (a private cul-de-sac of 36 lots with northerly aspect & valley views) close to town & adjoining the Warburton Trail - Move in Now.



For Sale

Please Call

View

ljhooker.com.au/RMZFM5

Contact

Richard Goldsmith

0407 348 172

richardgoldsmith@ljhookermooroolbark.com.au

Ben Hudson

0424 288 954

benhudson@ljhookermooroolbark.com.au



Disclaimer: All information contained therein is gathered from relevant third parties sources. We cannot guarantee or give any warranty about the information provided. Interested parties must rely solely on their own enquiries.

LJ Hooker Mooroolbark
(03) 9726 7711

More About this Property

Property ID	RMZFMS
Property Type	House
Including	Ducted Cooling Ducted Heating Toilets (2) Dishwasher Built-in-Robes

Richard Goldsmith 0407 348 172

Senior Sales Consultant | richardgoldsmith@ljhookermooroolbark.com.au

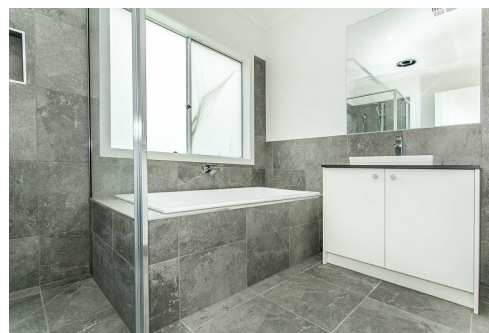
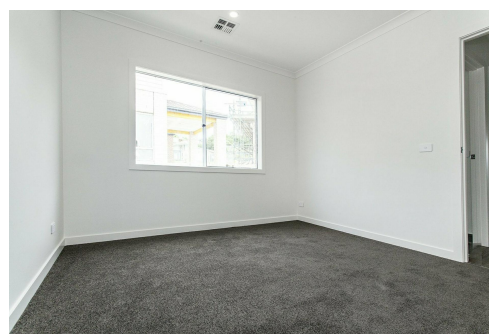
Ben Hudson 0424 288 954

Sales Consultant | benhudson@ljhookermooroolbark.com.au

LJ Hooker Mooroolbark (03) 9726 7711

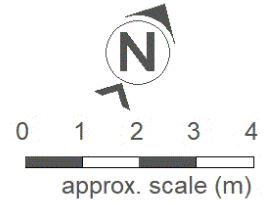
64 Brice Avenue, MOOROOLBARK VIC 3138

mooroolbark.ljhooker.com.au | admin@ljhookermooroolbark.com.au

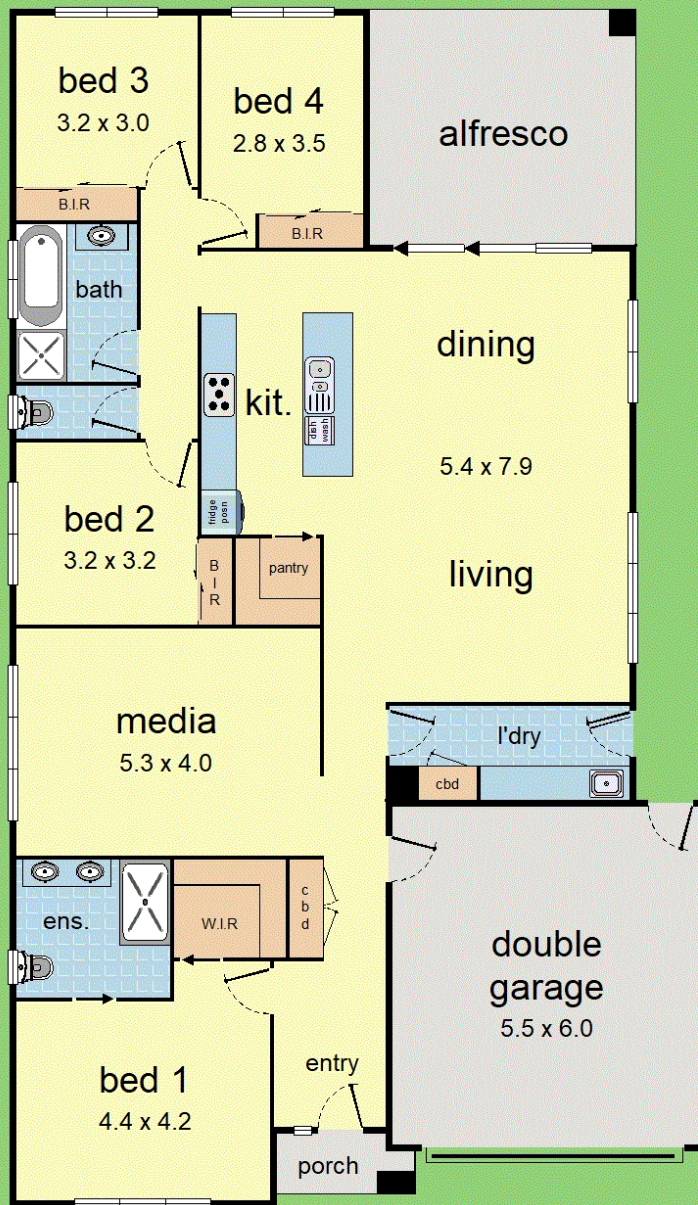


Disclaimer: All information contained therein is gathered from relevant third parties sources. We cannot guarantee or give any warranty about the information provided. Interested parties must rely solely on their own enquiries.

**LJ Hooker Mooroolbark
(03) 9726 7711**



This plan is a sketch, and all data shown is general only
 NB: All stated dimensions are approximate only & should not be taken as definite.



Lot 34, Jansen Place, Lilydale