



23 Kobada Avenue, Lilli Pilli

3 2 0

## Your chalet by the sea

We often think of chalets in the snow but this Cedar timber home has the character of a chalet by the sea. What a top spot! it's just a short walk to Mosquito Bay where you can snorkel, or scuba dive, do some supping, or if that's all a bit much for you, then watch the world go by while you lunch at the popular cafe that sits on the water.

The boat ramp might be a bonus if you're a fisherperson, but if you aren't and you just like to catch a wave, then either of the 2 popular surf beaches at Lilli Pilli or Malua Bay might be of interest to you instead.

Lots of gorgeous features like exposed beams, split level, large timber deck, ensuite off the main bedroom, large fully enclosed back yard, Reverse cycle aircon and the feeling of being in the bush with access into the reserve behind the house.

This home has been enjoyed as a regularly used holiday home but the vendors are moving in another direction so the opportunity is yours to grab.

Inspection by appointment.

**FOR SALE**  
\$720,000

### AGENTS

Karen Herrick  
0417 990 014  
karen.herrick@ljhooker.com.au

### AGENCY

LJ Hooker Malua Bay  
(02) 4471 2344

All information contained therein is gathered from relevant third parties sources.  
We cannot guarantee or give any warranty about the information provided.  
Interested parties must rely solely on their own enquiries.

LJ Hooker

## MORE DETAILS

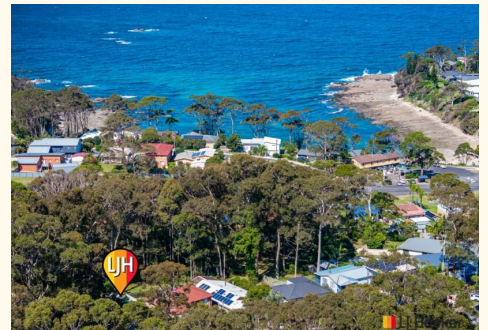
Property ID	MDSF9Z
Property Type	House
Land Area	645 m2
Including	Toilets (2)

### Karen Herrick 0417 990 014

Licensed Real Estate Agent | Auctioneer | Licensed Stock & Station Agent | karen.herrick@ljhooker.com.au

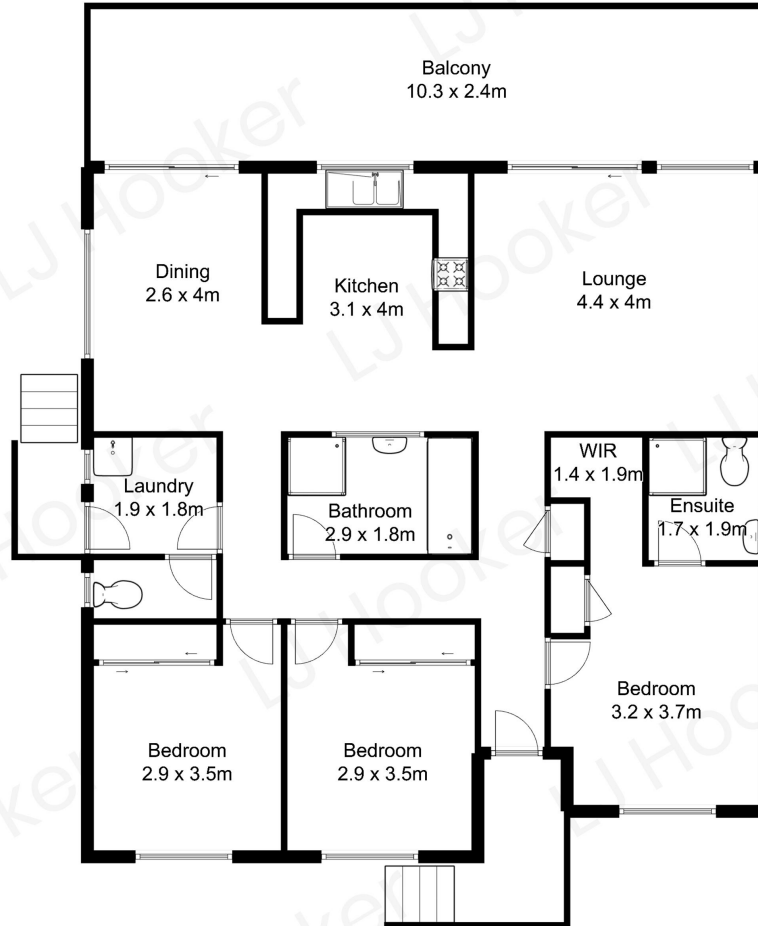
### LJ Hooker Malua Bay (02) 4471 2344

Shop 1, 4 Kuppa Avenue, MALUA BAY NSW 2536  
maluabay.ljhooker.com.au | maluabay@ljhooker.com.au



All information contained therein is gathered from relevant third parties sources.  
We cannot guarantee or give any warranty about the information provided.  
Interested parties must rely solely on their own enquiries.

Approximate Floor Area  
140 square metres  
Including balcony



All measurements are approximate and are intended as a guide only