

139 New Canterbury Road, Lewisham

High-Exposure Inner West Freehold with Strong Income & Future Upside

A rare opportunity to acquire a highly visible two-storey mixed-use freehold in the heart of Lewisham, anchored by an established smash repair workshop and complemented by a three-bedroom residence. Situated on New Canterbury Road within Sydney's vibrant Inner West, this versatile property delivers strong dual-income returns with a potential Gross Annual Income of \$135,000 pa and presents excellent future upside, including possible redevelopment potential (STCA).

Key highlights:

- Land area: 240 sqm approx*
- Building area: 340 sqm approx*
- Long-established smash repair workshop with prominent street frontage
- Three-bedroom residential dwelling offering separate access and strong rental appeal
- Potential Gross Annual Income of \$135,000 pa
- Potential to capitalise on Inner West growth and planning frameworks to add density or alternative uses (STCA)
- On-site parking with rear lane access and excellent exposure to

3 🏠 1 🚗 2 🚗

FOR SALE

Expressions of interest

VIEW

By Appointment

AGENTS

Domenic Bucciarelli
0411 199 466
domenic@ljha.com.au

Dylan Bozicevic
0449 787 123
dylan@ljha.com.au

AGENCY

LJ Hooker Ashfield
(02) 9797 6044

All information contained therein is gathered from relevant third parties sources.
We cannot guarantee or give any warranty about the information provided.
Interested parties must rely solely on their own enquiries.



- high traffic flows
- Well connected to transport including Lewisham Train Station, Light Rail and multiple bus routes
- Positioned within a dynamic precinct of retail, commercial and residential amenity in Lewisham's Inner West locale

This offering presents an outstanding platform for investors or owner-occupiers seeking a rare mixed-use asset with both stable income and future repositioning upside in a tightly held Sydney market.

DISCLAIMER: This advertisement contains information provided by third parties. While all care is taken to ensure otherwise, LJ Hooker Ashfield does not make any representation as to the accuracy of the information contained in the advertisement, does not accept and responsibility or liability and recommends that any client make their own investigations and enquiries. All images are indicative of the property only.

MORE DETAILS

Property ID 1AK8F8B
Property Type Other

Domenic Bucciarelli 0411 199 466

Principal-Licensee in Charge | domenic@ljha.com.au

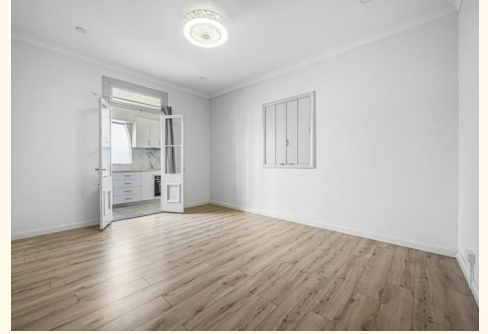
Dylan Bozicevic 0449 787 123

Sales Associate | dylan@ljha.com.au

LJ Hooker Ashfield (02) 9797 6044

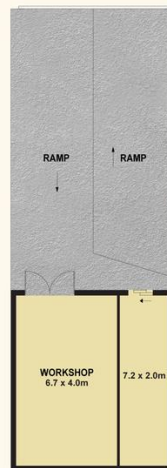
216 Liverpool Road, ASHFIELD NSW 2131

ashfield.ljhooker.com.au | ashfield@ljha.com.au





COMMERCIAL LEVEL 1



COMMERCIAL LEVEL 2



RESIDENCE

139 NEW CANTERBURY ROAD, LEWISHAM

DISCLAIMER

PLANS SHOWN ARE FOR MARKETING PURPOSES ONLY. ALL DIMENSIONS ARE APPROXIMATE AND NOT TO SCALE. THEY ARE SUBJECT TO ERRORS AND INACCURACIES AND NO LIABILITY WILL BE ACCEPTED. INTERESTED PARTIES SHOULD MAKE THEIR OWN ENQUIRIES.