



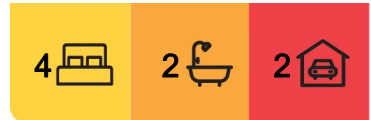
## Leppington, 29 Mantis Circuit

Modern Family Living in Prime Emerald Hills

Discover comfort and convenience in this beautifully presented 4-bedroom home, perfectly positioned in the sought-after Emerald Hills estate.

### Property Highlights:

- 4 spacious bedrooms with built-in wardrobes
- 2 modern bathrooms, including master ensuite
- Open-plan kitchen with stone benchtops & gas cooking
- Large living and dining area
- Theater room
- Covered alfresco perfect for entertaining
- Double lock-up garage with internal access
- Ducted air conditioning, tiled floors throughout & solar system
- Close to local schools, parks & Emerald Hills Shopping Village
- Easy access to Leppington Train Station and major roads



**For Sale**  
Please Call

**View**  
[ljhooker.com.au/ZFDGRH](http://ljhooker.com.au/ZFDGRH)

**Contact**  
**Alen Toma**  
0405 157 651  
[atoma.casula@ljhooker.com.au](mailto:atoma.casula@ljhooker.com.au)



**LJ Hooker Casula**  
**(02) 9601 8333**

**Disclaimer:** All information contained therein is gathered from relevant third parties sources. We cannot guarantee or give any warranty about the information provided. Interested parties must rely solely on their own enquiries.

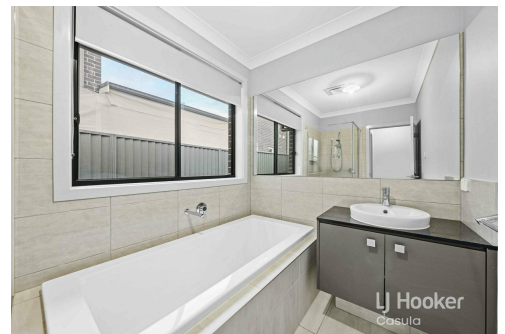
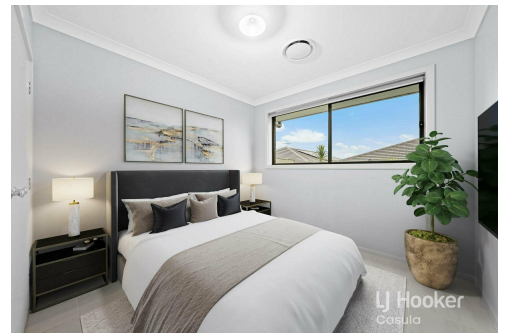
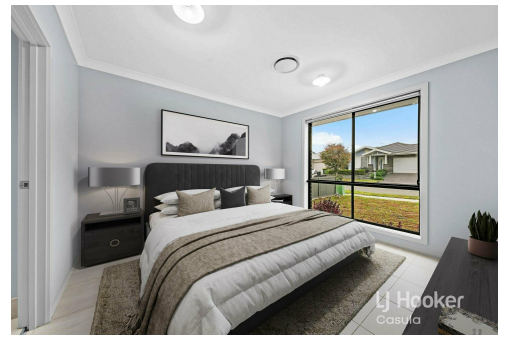
Ideal for families, first-home buyers, or savvy investors &mdash; move in and enjoy or lease out with confidence!

## More About this Property

<b>Property ID</b>	ZFDGRH
<b>Property Type</b>	House
<b>Land Area</b>	375 m2
<b>Including</b>	Ensuite Air Conditioning Toilets (2) Dishwasher Outdoor Entertaining Built-in-Robes Secure Parking Fully Fenced Remote Garage Solar Panels

**Alen Toma 0405 157 651**  
Principal | [atoma.casula@ljhooker.com.au](mailto:atoma.casula@ljhooker.com.au)

**LJ Hooker Casula (02) 9601 8333**  
62 Marsh Parade, CASULA NSW 2170  
[casula.ljhooker.com.au](http://casula.ljhooker.com.au) | [casula@ljhooker.com.au](mailto:casula@ljhooker.com.au)



**LJ Hooker Casula**  
**(02) 9601 8333**

**Disclaimer:** All information contained therein is gathered from relevant third parties sources. We cannot guarantee or give any warranty about the information provided. Interested parties must rely solely on their own enquiries.



SITE PLAN

## 29 MANTIS CIRCUIT, LEPPINGTON

Disclaimer : Dimensions are approximate and should only be used as a guide.  
 All information contained herein is gathered from sources we believe to be reliable.  
 However, we cannot guarantee its accuracy and interested parties should rely on their own enquiries.

