



23 Crystal Palace Way, Leppington

Space for Family, Value for Investor

Perfectly positioned in a growing pocket of Leppington, this well-presented home offers comfort, convenience and strong investment appeal. Ideal for families seeking space and lifestyle, or investors looking for a quality addition to their portfolio.

Highlights you'll love

- Open plan kitchen with 900mm steel appliances and stone benchtops
- Spacious living & dining, creating a functional space for everyday entertaining
- Master bedroom with walk-in robe and ensuite
- Generously sized bedrooms with built-in wardrobes
- Tiled alfresco, overlooking a private low-maintenance backyard
- Currently leased for \$780 per week, providing immediate rental return

This home truly has it all as it's only minutes to Leppington Train Station, Leppington & Denham Court Public Schools, Leppington & Willowdale shopping village. Plus, an abundance of local parks and major road links, everything you need is right at your doorstep.

Secure a quality home in a thriving location before someone else

All information contained therein is gathered from relevant third parties sources. We cannot guarantee or give any warranty about the information provided. Interested parties must rely solely on their own enquiries.

4 2 2

FOR SALE

Property Showcase

AGENTS

Samuel Moscabenny

0448 649 817

smoscabenny.leppington@ljhooker.com.au

Chelsea Mifsud

0429 628 005

cmifsud.leppington@ljhooker.com.au

AGENCY

LJ Hooker Leppington | Austral

(02) 9606 4311

LJ Hooker

does.

Call today to arrange your inspection.

- Some images in this advertisement have been virtually furnished and are for illustrative purposes only

Disclaimer: The above information has been furnished to LJ Hooker Leppington | Austral by the vendor/vendors legal representative. We have not verified whether or not that information is accurate, and do not have any belief one way or the other in its accuracy. LJ Hooker Leppington | Austral do not accept any responsibility to any person for its accuracy and do no more than pass it on. All interested parties should make and rely upon their own enquiries in order to determine whether or not this information is, in fact, accurate.

MORE DETAILS

Property ID	125AHCV
Property Type	House
Including	Ensuite Ducted Cooling Ducted Heating Outdoor Entertaining Built-in-Robes Remote Garage

Samuel Moscabenny 0448 649 817

Licensed Sales Agent | smoscabenny.leppington@ljhooker.com.au

Chelsea Mifsud 0429 628 005

Licensed Sales Agent | cmifsud.leppington@ljhooker.com.au

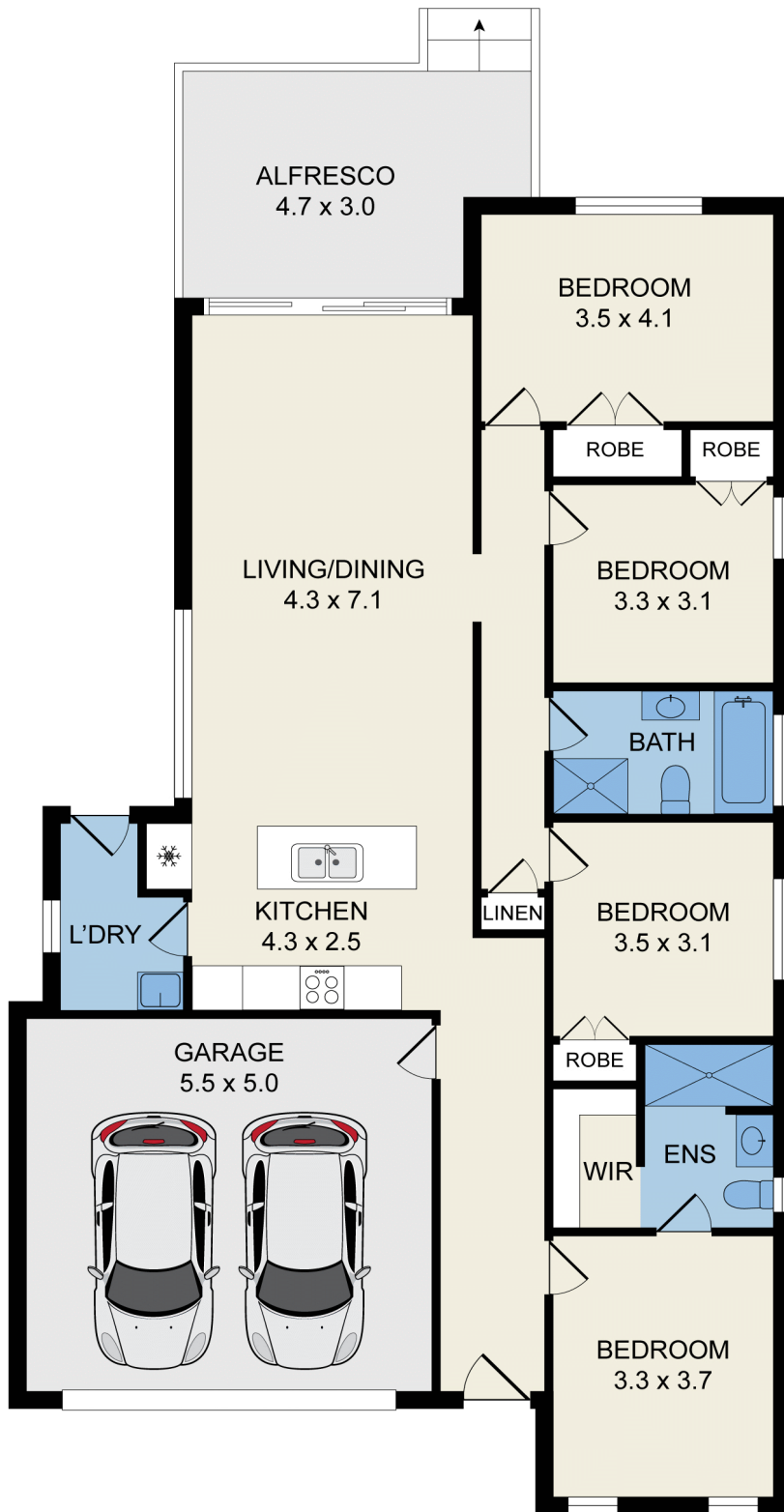
LJ Hooker Leppington | Austral (02) 9606 4311

Leppington Village Shopping Centre, Shop GC1, 108-116 Ingleburn Road, LEPPINGTON NSW 2179

leppington.ljhooker.com.au | leppington@ljhooker.com.au



All information contained therein is gathered from relevant third parties sources. We cannot guarantee or give any warranty about the information provided. Interested parties must rely solely on their own enquiries.



All information contained herein is gathered from all sources we believe to be reliable. However we cannot guarantee its accuracy and interested parties should rely on their own enquiries.



23 Crystal Palace Way, Leppington

All information contained therein is gathered from relevant third parties sources. We cannot guarantee or give any warranty about the information provided. Interested parties must rely solely on their own enquiries.

