



Leigh, 6 Sea View Road

Embrace and Enjoy Life ...

In Leigh by the sea, in this sunny and inviting one-level home on 1093 m², with a great backyard. Enjoy the beautiful sea views from most of the rooms. A central living area opens up on both sides to follow the sun all day.

Sip your favourite wine while contemplating the ocean on the front deck facing the garden with lawn, fruit trees, and other established specimens. The backyard is spacious, very private, leveled, and great for a potter around your vegetable garden, or to park a boat. Children and pets will love it to run around with their toys.

The house has an easy feel about it, with the living area in an L shape wrapped around the deck. Sliding doors lead outside, and a wood burner makes the lounge cozy. The kitchen is in the back corner, allowing you to watch the sea while cooking, and entertaining, as well as watching the children playing in the backyard.



Disclaimer: All information contained therein is gathered from relevant third parties sources. We cannot guarantee or give any warranty about the information provided. Interested parties must rely solely on their own enquiries.

SOLD

3 

1 

1 

For Sale

By Negotiation

View

ljhooker.co.nz/EZEHAY

Contact

Marie-Dominique Lennan

021 490 039

marie.lennan@ljhooker.co.nz

LJ Hooker Warkworth

(09) 425 8589

Broadbents 2001 Ltd

A corridor leads to the master bedroom, bathroom, and separate toilet in one wing and the other has a double bedroom opening onto the deck facing the sea views and a single room/office at the back.

There is a garage/workshop (needing attention) with a lean-to attached.

Walk to the preschool, school, cafes, general store, and to the bowling club and tennis clubs in the next street. Matheson Bay is the closest all-tide beach and Daniels Reef is down the road for the keen surfers. Leigh Harbour is the hub of our fishing community with the wharf and boat ramp to launch your boat. Matakana cinemas, shops and restaurants, are only 10 minutes drive away. This property, with its level section, might work well for most people, holiday homeowners, permanent residents, young families, or older couples.

More About this Property

Property ID EZEHAY

Property Type House

House Size 113 m²

Land Area 1093 m²

Licensed Real Estate Agents (REAA2008)

Marie-Dominique Lennan

Salesperson | marie.lennan@ljhooker.co.nz

LJ Hooker Warkworth (09) 425 8589

Broadbents 2001 Ltd

20 Queen Street, Warkworth,

warkworth.ljhooker.co.nz | warkworth@ljhooker.co.nz

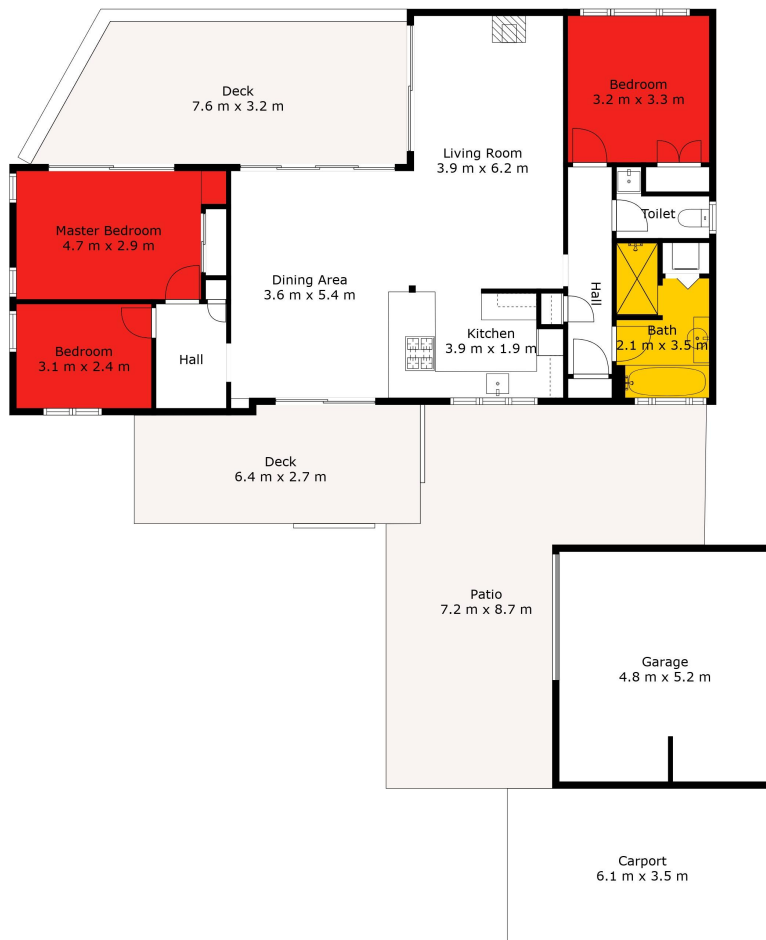


LJ Hooker Warkworth
(09) 425 8589

Broadbents 2001 Ltd

Disclaimer: All information contained therein is gathered from relevant third parties sources.

We cannot guarantee or give any warranty about the information provided. Interested parties must rely solely on their own enquiries.



Sizes & Dimensions Are Approximate. Actual May Vary.



LJ Hooker Warkworth
(09) 425 8589

Broadbents 2001 Ltd

Disclaimer: All information contained therein is gathered from relevant third parties sources. We cannot guarantee or give any warranty about the information provided. Interested parties must rely solely on their own enquiries.