



## Leigh, 19 Albert Street

Look at These views!

Daydream watching the ocean, boats, fish, dolphins, and whales passing along the Leigh coast while enjoying this 80's brick family home on 1047 m2, in one of the most elevated locations in the village.

You will mainly live on one level, on the ground floor of the 240 m2 house, shaped like the letter H, with the living areas on one side and the 3 double bedrooms, 2 bathrooms, and a large double garage with internal access on the other.

The large master bedroom faces the ocean with these beautiful views to wake up to.

Upstairs is a studio/office where you can contemplate the world passing by around the village and at sea.

The dining area opens up on a sunny deck, with birds chirping in the trees and there is enough to do in the garden with 2 sheds and 2 water tanks.

Within a short walk to the Bowling Club and Tennis Club in the street and a



**Disclaimer:** All information contained therein is gathered from relevant third parties sources. We cannot guarantee or give any warranty about the information provided. Interested parties must rely solely on their own enquiries.

**SOLD**

3

2

2

**For Sale**

By Negotiation

**View**

[ljhooker.co.nz/EW3HAY](http://ljhooker.co.nz/EW3HAY)

**Contact**

**Marie-Dominique Lennan**

021 490 039

[marie.lennan@ljhooker.co.nz](mailto:marie.lennan@ljhooker.co.nz)

**Jennie Georgetti**

021 389 236

[jennie.georgetti@ljhooker.co.nz](mailto:jennie.georgetti@ljhooker.co.nz)

**LJ Hooker Warkworth**

**(09) 425 8589**

Broadbents 2001 Ltd

leisurely stroll to pre-school, primary school, the shops, cafes, and Leigh Sawmill Cafe. The boat ramp and wharf are down the road. Matheson Bay and Goat Island are your closest beaches and, of course, the whole Matakana & Pakiri area to enjoy within 15 minutes drive.

An easy drive from Auckland on our brand-new motorway, only an hour away, or less if you live on the shore.



## More About this Property

<b>Property ID</b>	EW3HAY
<b>Property Type</b>	House
<b>House Size</b>	240 m²
<b>Land Area</b>	1047 m²

**Licensed Real Estate Agents (REAA2008)**

**Marie-Dominique Lennan 021 490 039**

Salesperson | [marie.lennan@ljhooker.co.nz](mailto:marie.lennan@ljhooker.co.nz)

**Jennie Georgetti 021 389 236**

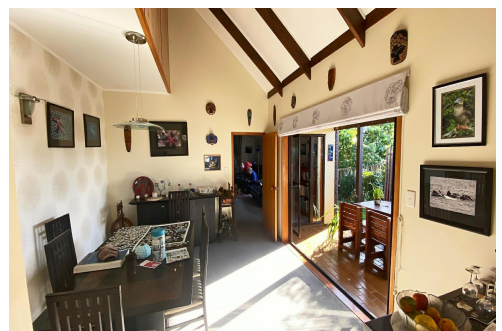
Licensed Agent (REAA 2008) | [jennie.georgetti@ljhooker.co.nz](mailto:jennie.georgetti@ljhooker.co.nz)

**LJ Hooker Warkworth (09) 425 8589**

Broadbents 2001 Ltd

20 Queen Street, Warkworth,

[warkworth.ljhooker.co.nz](http://warkworth.ljhooker.co.nz) | [tulpandco@ljhooker.co.nz](mailto:tulpandco@ljhooker.co.nz)



**Disclaimer:** All information contained therein is gathered from relevant third parties sources. We cannot guarantee or give any warranty about the information provided. Interested parties must rely solely on their own enquiries.

**LJ Hooker Warkworth**  
**(09) 425 8589**

Broadbents 2001 Ltd