

Lawson, 16/4 Toorale Terrace

Ultra-Modern, Uber-Stylish, Awaiting it's New Owner!

Welcome to 16/4 Toorale Terrace, a stunning, architecturally designed four-bedroom townhouse that blends style, space, and convenience in perfect harmony. Tucked away in a peaceful enclave of sought-after Lawson, this home is the epitome of low-maintenance luxury living.

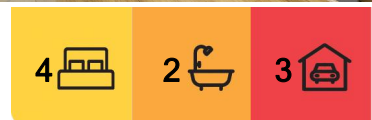
Step inside and be instantly impressed by the sun-drenched open plan living area downstairs, boasting sleek modern finishes and an ultra-stylish vibe that sets the tone for the entire home.

The open kitchen is a culinary delight, featuring high-end appliances, ample storage, and a seamless flow to the expansive courtyard-perfect for entertaining or simply enjoying the sunshine in your extra-large, low-maintenance outdoor space.

Upstairs, you'll find a second living area, ideal for a media room or peaceful retreat.



Disclaimer: All information contained therein is gathered from relevant third parties sources. We cannot guarantee or give any warranty about the information provided. Interested parties must rely solely on their own enquiries.



For Sale
By Negotiation

View
Thu 19th Jun @ 5:00PM - 5:15PM

Contact
Samuel Thompson
0412 300 774
samuel.thompson@ljhmanuka.com.au

EER ★★★★★★

LJ Hooker Manuka
(02) 6239 5551

The master suite is a true sanctuary, complete with a private balcony, generous proportions, and a chic ensuite. Each of the additional bedrooms is generously sized and includes built-in robes, providing comfort and space for the whole family.

Additional features include:

- *Four spacious bedrooms | Two designer bathrooms
- *Three-car garage with internal access & room for storage
- *Ducted heating & cooling for year-round comfort
- *Keyless entry and intercom system for added security
- *Contemporary, easy-care finishes throughout
- *Light-filled layout with quality craftsmanship
- *Low maintenance courtyard and gardens
- *Ready to move straight in!

With everything you need and more, this home is ideal for families, professionals, or savvy investors seeking a contemporary lifestyle in a thriving suburb.

Moments from local shops, public transport, ANU, Belconnen Town Centre, and nature reserves, this location combines urban convenience with serene surroundings.

EER: 6

Rates: \$642pq (approx.)

Strata: \$2210pq (approx.)

Land Tax: \$897pq (approx.)

AUV: \$4,182,400

Unit entitlement: 3.90%

Internal Living: 251sqm (approx.)

Outdoor Living: 72sqm (approx.)

Disclaimer:

While all care has been taken in compiling information regarding properties marketed for rent or sale, we accept no responsibility and disclaim all liabilities regarding any errors or inaccuracies contained herein. All parties should rely on their own investigation to validate the information provided.



LJ Hooker Manuka
(02) 6239 5551

Disclaimer: All information contained therein is gathered from relevant third parties sources. We cannot guarantee or give any warranty about the information provided. Interested parties must rely solely on their own enquiries.

More About this Property

Property ID	1U20FMF
Property Type	Terrace
House Size	251 m2
EER	6
Including	Air Conditioning Ducted Cooling Ducted Heating Toilets (1) Intercom Courtyard Balcony Dishwasher Outdoor Entertaining Built-in-Robes Secure Parking Liveability

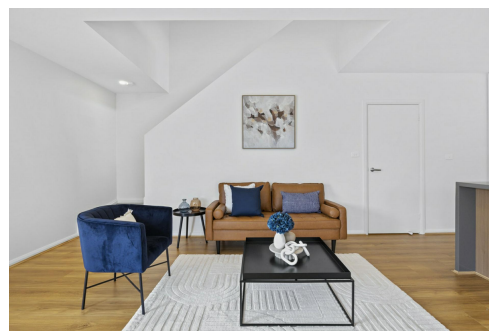
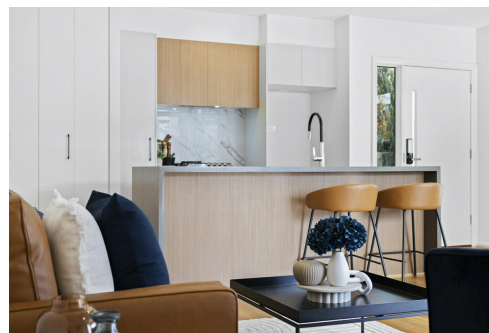
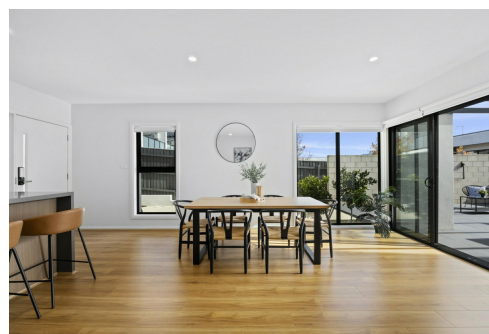
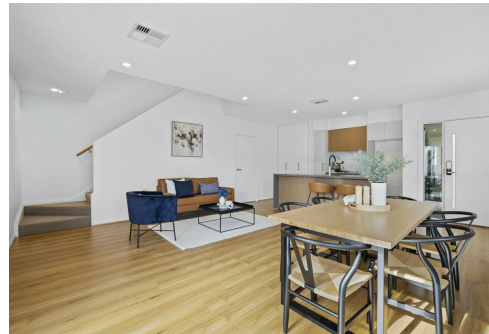
Samuel Thompson 0412 300 774

Property Consultant | samuel.thompson@ljhmanuka.com.au

LJ Hooker Manuka (02) 6239 5551

20 Bougainville Street, MANUKA ACT 2603

manuka.ljhooker.com.au | manuka@ljhmanuka.com.au



LJ Hooker Manuka
(02) 6239 5551

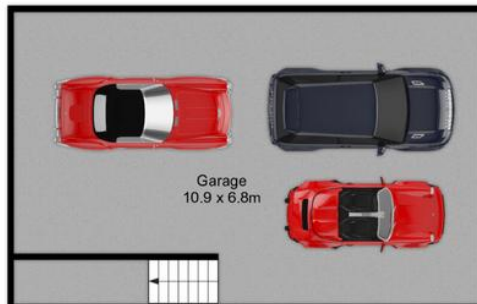
Disclaimer: All information contained therein is gathered from relevant third parties sources.
We cannot guarantee or give any warranty about the information provided. Interested parties must rely solely on their own enquiries.



FIRST FLOOR



GROUND FLOOR



GARAGE



LJ Hooker
Manuka

Indicative only. Dimensions are approximate. All information contained herein is gathered from sources we believe to be reliable. However, we cannot guarantee its accuracy and interested persons should rely on their own enquiries.