



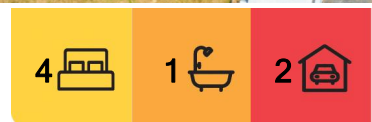
Lawitta, 1897 Lyell Highway

Charming Country Living!

This delightful property offers an idyllic country lifestyle with modern comforts. This spacious residence features three/four well-appointed bedrooms, providing ample space for family living.

As you approach the home, you are greeted by a charming exterior with a welcoming deck. The expansive grounds offers plenty of room for outdoor activities, gardening, or simply basking in the tranquility of country life. Enough room for a few sheep or chickens, or an amazing veggie patch! A large apple tree is already thriving on the property.

Inside, the living area is bathed in natural light, enhancing the inviting atmosphere. Beautiful French doors separate the living and dining space without limiting the free-flowing feel, perfect for family gatherings or entertaining friends. The contemporary kitchen boasts quality finishes, ideal for culinary enthusiasts.



For Sale
Please Call

View
ljhooker.com.au/5X8UFCS

Contact
Jeff Hamilton
0404 888 538
jhamilton@ljhookerpinnacle.com
Bree Harrison
0400 770 514
bharrison@ljhookerpinnacle.com



Disclaimer: All information contained therein is gathered from relevant third parties sources. We cannot guarantee or give any warranty about the information provided. Interested parties must rely solely on their own enquiries.

LJ Hooker Pinnacle Property
(03) 6272 8177

Each of the four bedrooms is thoughtfully designed, providing comfort and privacy. The upstairs bedroom would also be the ideal study, away from the rest of the house with plenty of natural light. The modern bathroom features both a shower and a bathtub, catering to all your relaxation needs.

The property is set on a generous plot, with ample outdoor space that invites you to explore your gardening aspirations or enjoy leisurely strolls in the fresh air. The surrounding countryside provides a picturesque backdrop, making it a perfect retreat from the hustle and bustle of urban life. Additional features include a dedicated laundry area and a versatile space under the stairs for additional storage needs.

This property is not just a house; it is a gateway to a peaceful country life, where you can create lasting memories with family and friends. Embrace the charm of Lawitta and make this beautiful residence your new home.

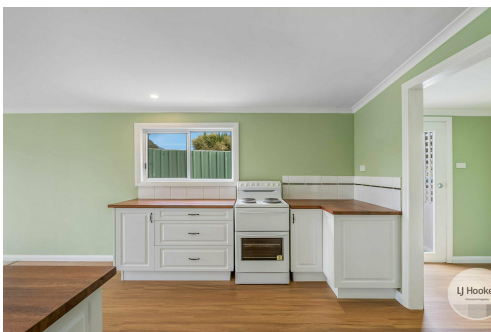
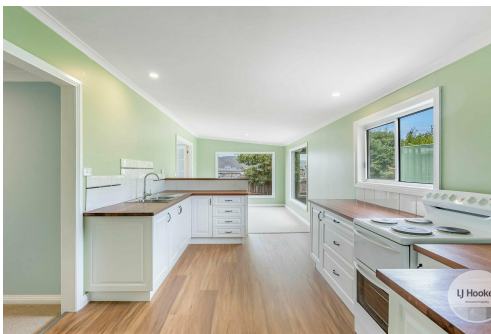
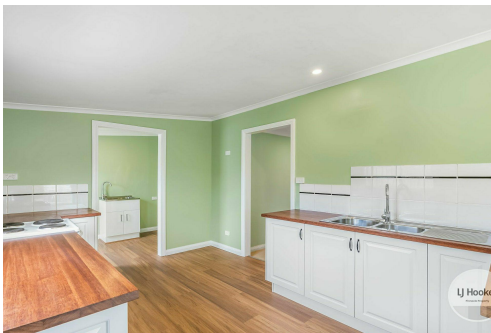
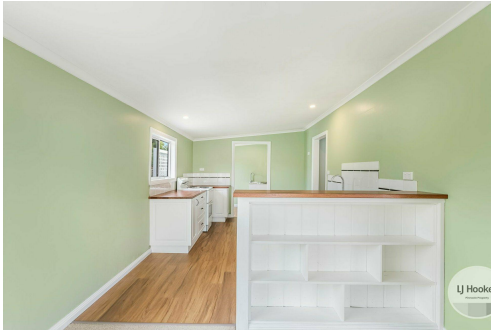
The information contained herein has been supplied to us and we have no reason to doubt its accuracy, however, cannot guarantee it. Accordingly, all interested parties should make their own enquiries to verify this information.

More About this Property

Property ID	5X8UFCS
Property Type	House
House Size	194 m ²
Land Area	2023 m ²
Including	Air Conditioning Deck

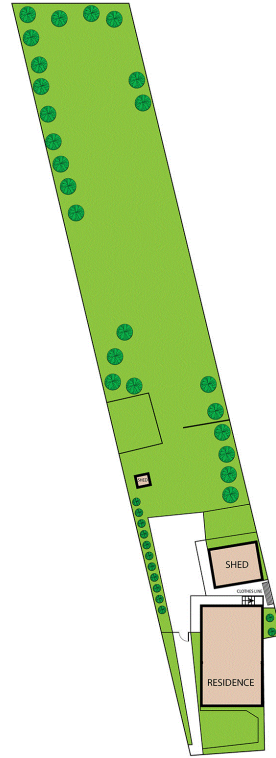
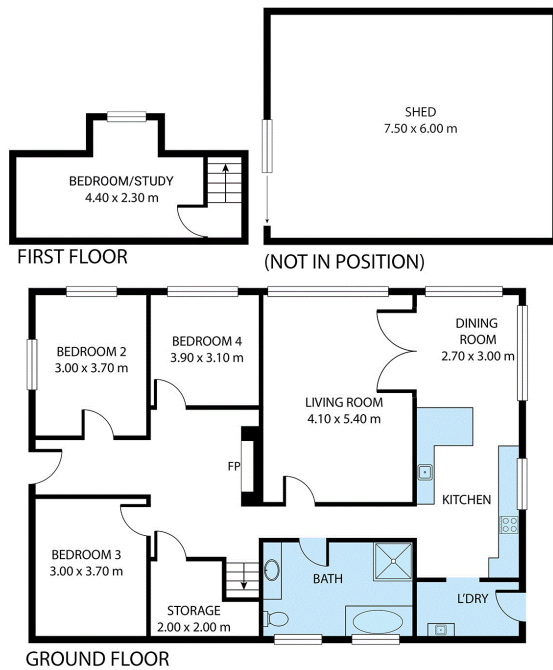
Jeff Hamilton 0404 888 538
Property Representative | jhamilton@ljhookerpinnacle.com
Bree Harrisson 0400 770 514
Executive Assistant to Jeff Hamilton | bharrisson@ljhookerpinnacle.com

LJ Hooker Pinnacle Property (03) 6272 8177
402 Main Road, GLENORCHY TAS 7010
pinnacleproperty.ljhooker.com.au | hello@ljhookerpinnacle.com



Disclaimer: All information contained therein is gathered from relevant third parties sources. We cannot guarantee or give any warranty about the information provided. Interested parties must rely solely on their own enquiries.

LJ Hooker Pinnacle Property
(03) 6272 8177



1897 Lyell Highway, Lawitta

House area: 194 sqm

Areas and dimensions are approximate and therefore this floor plan should only be used for illustrative purposes.

Real Estate Marketing by nextcreative.com.au

House Area: 194 sqm

Shed: 45 sqm

Total Usable Area: 239 sqm



LJ Hooker Pinnacle Property
(03) 6272 8177

Disclaimer: All information contained therein is gathered from relevant third parties sources.
We cannot guarantee or give any warranty about the information provided. Interested parties must rely solely on their own enquiries.