



## Latrobe, 15 Mountain View Rise

### Modern Comfort in Popular Latrobe

This thoughtfully designed three bedroom home offers the perfect balance of relaxation and functionality. The master bedroom serves as a private retreat, complete with a walk in wardrobe and ensuite. The two additional bedrooms each feature built in wardrobes, providing ample storage. The main bathroom, with a separate shower and bath, ensures convenience for family and guests alike.

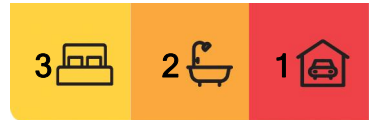
At the heart of the home is the kitchen, equipped with a large walk in pantry and filled with natural light. This inviting space is perfect for both cooking and gathering. Adjacent is a separate dining area, ideal for shared meals and special occasions, with large windows framing views of Mount Roland. The separate lounge offers a cozy haven for unwinding at the end of the day.

Step outside through double wide sliding glass doors to discover an undercover deck that creates a year-round outdoor living space. Whether you're enjoying a quiet morning coffee or hosting an evening meal, this space enhances your connection to the outdoors.

Additional under house storage and a garden shed provide practical solutions for keeping



**Disclaimer:** All information contained therein is gathered from relevant third parties sources. We cannot guarantee or give any warranty about the information provided. Interested parties must rely solely on their own enquiries.



**For Sale**  
Offers Over \$650,000

**View**  
[l.jhooker.com.au/8D1HVM](https://l.jhooker.com.au/8D1HVM)

**Contact**  
**Melissa Burt**  
0448 564 561  
[melissa.burt@l.jhooker.com.au](mailto:melissa.burt@l.jhooker.com.au)  
**Michael Ziegler**  
0409 764 219  
[michael.ziegler@l.jhooker.com.au](mailto:michael.ziegler@l.jhooker.com.au)

**LJ Hooker Devonport**  
0473 104 200

everything organized.

The property includes an attached single car garage with an electric door, offering secure and convenient parking. There is also additional space to accommodate another vehicle or a caravan, making it ideal for those with extra parking needs.

To keep living costs down, the home is fitted with solar panels, ensuring energy efficiency and sustainability.

With its modern design, views, and thoughtful features, 15 Mountain View Rise is equally suited to tranquil living or lively entertaining and located just a short stroll from the hospital, it's ideal for healthcare workers or anyone seeking easy access to essential services. This is more than a house it is a place where life can truly flourish.

Latrobe is renowned for its friendly community, historic streetscapes, and vibrant local scene, including boutique shops, cafes and mountain bike trails. With parks, walking trails, and the Mersey River nearby, it's a lifestyle that combines tranquillity or adventure with modern amenities. This is your chance to embrace the best of small-town living with everything at your fingertips!

The information contained herein has been supplied to us by sources which are considered reliable, and we have no reason to doubt its accuracy. However, all interested parties should make their own enquiries to verify this information to be correct. All measurements are approximate and are for illustrative purposes only.

## More About this Property

<b>Property ID</b>	8D1HVM
<b>Property Type</b>	House
<b>Land Area</b>	670 m2
<b>Including</b>	Toilets (2)

### Melissa Burt 0448 564 561

Director | [melissa.burt@ljhooker.com.au](mailto:melissa.burt@ljhooker.com.au)

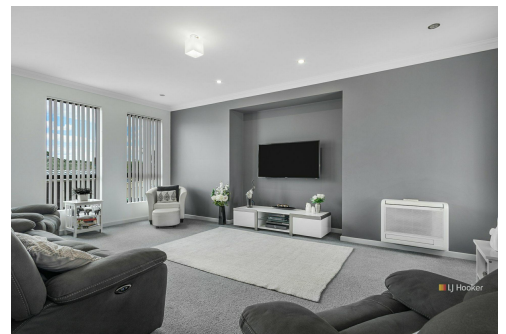
### Michael Ziegler 0409 764 219

Licensee | [michael.ziegler@ljhooker.com.au](mailto:michael.ziegler@ljhooker.com.au)

### LJ Hooker Devonport 0473 104 200

16 Don Road, DEVONPORT TAS 7310

[devonport.ljhooker.com.au](http://devonport.ljhooker.com.au) | [devonport@ljhooker.com.au](mailto:devonport@ljhooker.com.au)



**LJ Hooker Devonport**  
**0473 104 200**

**Disclaimer:** All information contained therein is gathered from relevant third parties sources. We cannot guarantee or give any warranty about the information provided. Interested parties must rely solely on their own enquiries.