



Lathlain, 40/46-48 Rutland Avenue

For Your Eyes Only

2 1 1

Welcome, agent. Your next mission: secure an exclusive residence in the heart of Lathlain with an uninterrupted City and River view, even MI6 would approve.

This top-tier hideout offers two bedrooms and good size living and kitchen. For those who appreciate the finer things in life-be it a vodka martini (shaken, not stirred) you'll love evenings on your balcony watching Perth light up, especially the Matagarup Bridge.

Positioned within striking distance of the CBD and Crown Perth, this property is prime for investors and first home buyers alike.

Your orders are clear: Act fast. Disappear into a clever property purchase.

What we love:

For Sale
\$375,000

View
ljhooker.com.au/3SE0FGJ

Contact
Katie Lawley
0448 682 624
katie.lawley@ljhooker.com.au



Disclaimer: All information contained therein is gathered from relevant third parties sources. We cannot guarantee or give any warranty about the information provided. Interested parties must rely solely on their own enquiries.

LJ Hooker City Residential
(08) 9325 0700

- * Striking city and river views
- * Living and space for dining
- * Good size kitchen with ample storage
- * Good size bedrooms
- * Leased to June 2025 for \$425 per week
- * Scope for refurb and value add

Rates:

Council - \$1,581.66 p.a.

Water - \$821.39 p.a.

Strata - Admin - \$496.65 p/qtr. Reserve - \$105.35 p/qtr.

More About this Property

Property ID	3SE0FGJ
Property Type	Unit
Including	Air Conditioning Balcony Built-in-Robes

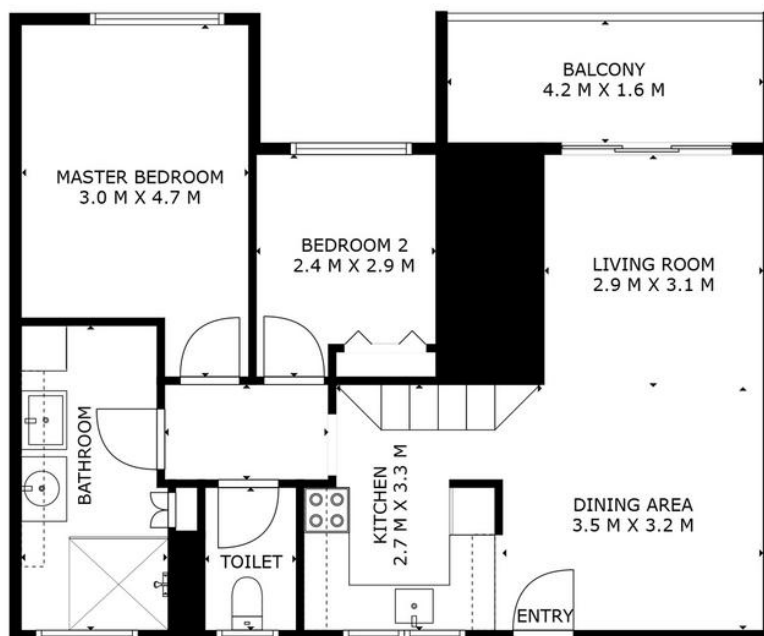
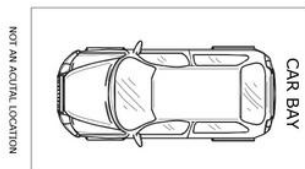
Katie Lawley 0448 682 624
 Sales Executive | katie.lawley@ljhooker.com.au

LJ Hooker City Residential (08) 9325 0700
 Shop 30, 82 Royal Street, EAST PERTH WA 6004
cityresperth.ljhooker.com.au | hello@ljhpxp.com.au



Disclaimer: All information contained therein is gathered from relevant third parties sources. We cannot guarantee or give any warranty about the information provided. Interested parties must rely solely on their own enquiries.

LJ Hooker City Residential
(08) 9325 0700



Approximate Areas
Internal Living 67m²
Balcony 7m²



40/46 Rutland Avenue, Lathlain

This floor plan is for illustrative purposes only. While every effort has been made to provide an accurate representation, all measurements & other information are approximation only.

www.perthrealestaemedia.com
www.cityresperth.ljhooker.com.au



LJ Hooker City Residential
(08) 9325 0700

Disclaimer: All information contained therein is gathered from relevant third parties sources.
We cannot guarantee or give any warranty about the information provided. Interested parties must rely solely on their own enquiries.