



Latham, 8 Stumm Place

Charming North-Facing separate title home

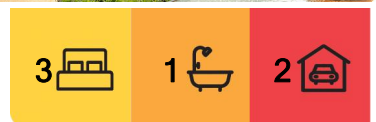
This delightful, single-level, three-bedroom home that perfectly balances comfort, style, and convenience. This north-facing property features beautifully renovated kitchen and bathroom areas and offers a variety of benefits for a wide range of buyers, from investors to first-time homeowners or those looking to downsize.

Enjoy the inviting living spaces that provide ample room for relaxation and entertainment. The open-plan design creates a seamless flow between the living, dining, and beautifully renovated kitchen, perfect for modern family living. The recently renovated kitchen is a standout feature, boasting contemporary appliances, ample storage, and a stylish design that will inspire your inner chef. It's the heart of the home, where family meals and memories are made.

The property offers three well-sized bedrooms, each with plenty of natural light and built-in wardrobes. The home is designed for ease of living, all on a single level. The renovated



Disclaimer: All information contained therein is gathered from relevant third parties sources. We cannot guarantee or give any warranty about the information provided. Interested parties must rely solely on their own enquiries.



For Sale
\$695,000+

View
ljhooker.com.au/1HARF9U

Contact
Eoin Ryan-Hicks
0424 042 419
Eoin.ryan-hicks@ljhooker.com.au
Olivia Schultz
0415 366 287
olivia.schultz@ljhkipax.com.au

EER ★★★★★

LJ Hooker Kippax
(02) 6255 3888

bathroom is both functional and stylish, providing a luxurious space to unwind and refresh.

Step outside to enjoy not one, but two private courtyards, perfect for outdoor gatherings, gardening, or simply unwinding in the fresh air. These spaces offer versatility and charm for all your outdoor activities. Additionally, the home includes an internal access garage, and air conditioning, and is separately titled, ensuring privacy and ease of ownership.

Positioned in a peaceful cul-de-sac, 8 Stumm Place is close to local schools, ovals, and just a short drive to the Kippax shopping precinct and Belconnen Town Centre. The location offers the perfect blend of tranquillity and convenience.

This home is ideal for various buyers. Investors will find it an easy-care investment opportunity with strong rental potential. First-home buyers will appreciate the modern amenities and convenient location. For those looking to downsize, this is the perfect home, offering comfort, style, and low maintenance.

Don't miss the opportunity to make this wonderful property your new home. Experience the perfect blend of comfort, convenience, and community at 8 Stumm Place, Latham. Contact us today to arrange a private inspection or we will see you at the next open home.

Features:

- Separately titled
- Three large bedrooms all with built-in-robos
- Single car garage with internal access
- Renovated kitchen & bathroom
- Two private courtyards
- Beautiful alfresco area
- Walking distance to local schools, oval & shops
- 118m² of living
- 348m² of land

Rates: \$2,279 pa approx

Land Tax: \$3,001 pa approx

EER: 3.5

All information contained herein is gathered from sources we consider to be reliable. However, we cannot guarantee or give any warranty about the information provided. Interested parties must solely rely on their own enquiries.



LJ Hooker Kippax
(02) 6255 3888

Disclaimer: All information contained therein is gathered from relevant third parties sources. We cannot guarantee or give any warranty about the information provided. Interested parties must rely solely on their own enquiries.

More About this Property

Property ID	1HARF9U
Property Type	House
House Size	118 m ²
Land Area	348 m ²
EER	3.5

Eoin Ryan-Hicks 0424 042 419

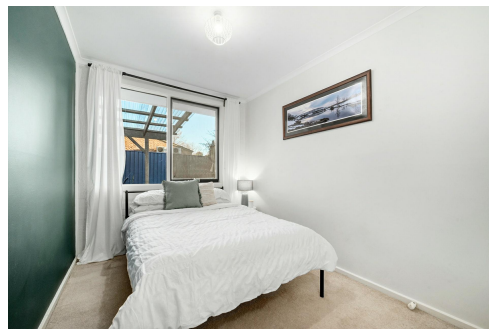
Franchise Owner | Sales Manager | Licensed Agent ACT & NSW | Eoin.ryan-hicks@ljhooker.com.au

Olivia Schultz 0415 366 287

Personal Assistant to Eoin Ryan-Hicks | olivia.schultz@ljhkippax.com.au

LJ Hooker Kippax (02) 6255 3888

Cnr Luke Street & Hardwick Crescent, HOLT ACT 2615
kippax.ljhooker.com.au | kippax@ljhooker.com.au



LJ Hooker Kippax
(02) 6255 3888

Disclaimer: All information contained therein is gathered from relevant third parties sources. We cannot guarantee or give any warranty about the information provided. Interested parties must rely solely on their own enquiries.



The floor plan is not to scale; measurements are indicative and in metres. All features included in this 3D plan are for inspiration purposes only. This is not an exact replica of the property or the position of exterior elements. Plans should not be relied on. Interested parties should make and rely on their own enquiries.

8 Stumm Place, Latham

Produced by DIAKRIT