

Latham, 59 Stretton Crescent

Diamond In The Rough

Bring your toolbox along to this spacious four-bedroom property, perfect for those seeking a rare opportunity to affordably enter into a larger home in a great spot.

The home is located a well-established, leafy street with the Latham Oval directly opposite.

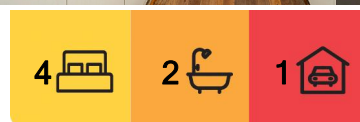
Walking distance to playgrounds, trails and walks along Umbagog District Park which runs along Gininderra Creek is perfect for those seeking an outdoor lifestyle. Access to arterial roads and public transport are mere minutes away.

Three large living spaces, four bedrooms and two bathrooms are the highlight in this diamond in the rough. Don't miss your chance to polish this opportunity into a stunning family home!

Features:



Disclaimer: All information contained therein is gathered from relevant third parties sources. We cannot guarantee or give any warranty about the information provided. Interested parties must rely solely on their own enquiries.



For Sale
Auction

View
ljhooker.com.au/HNZXGF8H

Contact
Duncan Walker
0452 494 520
dwalker@ljhbelconnen.com.au

EER ★★★★★

LJ Hooker Belconnen
(02) 6251 1477

- * Three generous sized living spaces
- * Functional kitchen at heart of the home
- * Five reverse cycle air conditioning units
- * Hardwood Flooring
- * Private front courtyard
- * Private deck and courtyard
- * Secure Garage
- * Directly opposite Latham Oval
- * Just around the corner from Latham Primary School, Preschool
- * 5 Min drive to Kippax Fair Shopping Centre
- * 7 Min drive to Belconnen Town Centre

Statistics:

- * Build Year: 1971
- * Land Size: 723 sqm
- * House Size: 173 sqm
- * Garage Size: 25 sqm
- * EER: 4.0
- * Rates: \$2,734 p.a.
- * Land Tax: \$4,403 p.a. (investors only)
- * UV: \$440,000

Disclaimer:

All information contained herein is gathered from external sources we consider to be reliable. However, we cannot guarantee or give any warranty about the information provided. Interested parties must solely rely on their own enquiries and satisfy themselves in all respects.

More About this Property

Property ID	HNZXGF8H
Property Type	House
House Size	173 m²
Land Area	723 m²
EER	4
Including	Air Conditioning Courtyard Dishwasher Floorboards Fully Fenced

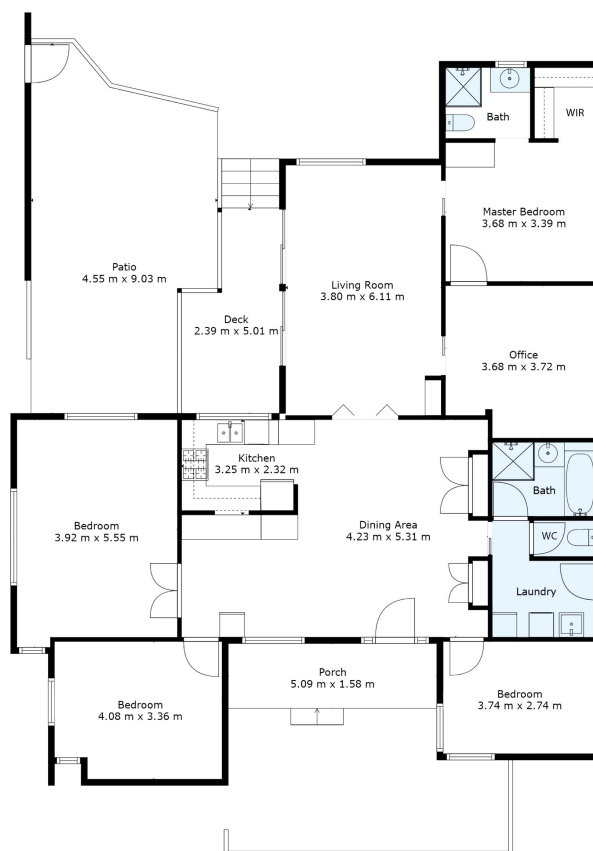
Duncan Walker 0452 494 520
Sales Agent | dwalker@ljhbelconnen.com.au

LJ Hooker Belconnen (02) 6251 1477
Shop 9, 21 Benjamin Way, BELCONNEN ACT 2617
belconnen.ljhooker.com.au | belconnen@ljhbelconnen.com.au



Disclaimer: All information contained therein is gathered from relevant third parties sources. We cannot guarantee or give any warranty about the information provided. Interested parties must rely solely on their own enquiries.

LJ Hooker Belconnen
(02) 6251 1477



59 Stretton Crescent, Latham

Disclaimer: Plans are indicative only and should be checked by the prospective purchaser. Plans shown are for presentation purposes and are not part of any legal document. All measurements and figures are approximate. The information herein is gathered from sources we believe to be reliable.

aperture
media house