



Latham, 14 Solomon Crescent

Room For All The Family

Set in one of Latham's finest streets, moments from gorgeous Umbagog Park, this unique character filled split level home is ideal for a large family.

Downstairs, there is a lounge and dining room plus a separate family room with cathedral ceilings. The living space opens out to a lovely covered front deck, ideal for entertaining and for enjoying leafy views across to the parkland opposite.

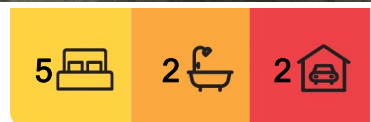
There are five bedrooms, set over two levels, the upper level bedrooms also with high vaulted ceilings, giving a sense of space and light.

Both bathrooms have been renovated and creature comforts such as reverse cycle air conditioning and a gas log fire complete the package.

With a great sized backyard and a big double garage and extra storage room there is



Disclaimer: All information contained therein is gathered from relevant third parties sources. We cannot guarantee or give any warranty about the information provided. Interested parties must rely solely on their own enquiries.



For Sale
850,000+

View
ljhooker.com.au/34RUGCY

Contact
Peta Barrett
0499 044 028
peta.barrett@ljhooker.com.au

EER ★★★★★

LJ Hooker Gungahlin
(02) 6213 3999

plenty of room to move.

Be quick to inspect. Vendors have asked that all offers be submitted.

- * Five bedrooms, set over two levels
- * Main bedroom with ensuite bathroom
- * Lounge, dining and family rooms
- * Gas log fire in main living room
- * Reverse cycle air conditioning
- * Two renovated bathrooms
- * Front deck for entertaining
- * Double garage plus an additional store room
- * Great sized private backyard
- * Excellent position opposite parkland
- * Within easy reach of local shopping and schools

Quick Stats:

Internal living size: 158sqm approx.

Land size: 733sqm approx.

Rates: \$2,842pa approx.

Land tax (only if rented): \$4,657pa approx.

EER: 0 stars

More About this Property

Property ID	34RUGCY
Property Type	House
House Size	158 m ²
Land Area	733 m ²

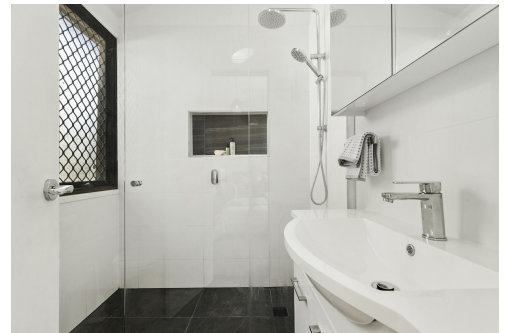
Peta Barrett 0499 044 028

Licensed Agent | peta.barrett@ljhooker.com.au

LJ Hooker Gungahlin (02) 6213 3999

Suite 2C, Level 1, Gungahlin Village, 46-50 Hibberson Street, GUNGAHLIN ACT 2912

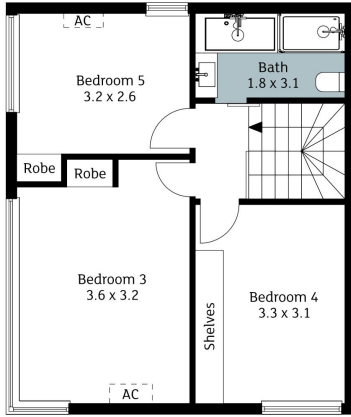
gungahlin.ljhooker.com.au | gungahlin@ljhooker.com.au



Disclaimer: All information contained therein is gathered from relevant third parties sources.

We cannot guarantee or give any warranty about the information provided. Interested parties must rely solely on their own enquiries.

**LJ Hooker Gungahlin
(02) 6213 3999**



Upper Level



Lower & Intermediate Levels

14 Solomon Crescent, Latham

The floorplan is not to scale; measurements are indicative and in metres. Exterior elements are not in position. Plans should not be relied on. Interested parties should make and rely on their own enquires.

Produced by **DIAKRIT**