

## Lane Cove, 602/1 Pottery Lane

### Luxury Executive Apartment, Bridge Views and Village Life

Located in one of Lane Cove's premier addresses, this Ivory and luxury executive apartment takes full advantage of natural light and breathtaking outlooks. Bridge and district views provide a stunning backdrop to a superb floor plan that's wrapped in glass and reflects a commitment to sophistication and contemporary living. Interiors flow out to the entertainer's terrace finished with retractable shutters for all weather use. Enjoy a premier lifestyle steps to the Lane Cove Village delights.

#### Features

- Exceptional security building, stylish common spaces
- Lift access, oak flooring, high ceilings, filled with light
- Open plan living and dining extends to the large terrace
- Gas point for the barbeque, retractable wall of shutters
- Stone wrapped gas kitchen with quality AEG appliances



**Disclaimer:** All information contained therein is gathered from relevant third parties sources. We cannot guarantee or give any warranty about the information provided. Interested parties must rely solely on their own enquiries.

1

1

1

**For Sale**  
Please Call

**View**  
[ljhooker.com.au/20RJF6A](http://ljhooker.com.au/20RJF6A)

**Contact**  
**Kerrie Robertson**  
0414 495 896  
[krobertson@ljhookerlanecove.com](mailto:krobertson@ljhookerlanecove.com)

**Stewart Kirkby**  
0418 672 566  
[skirkby@ljhookerlanecove.com](mailto:skirkby@ljhookerlanecove.com)

**LJ Hooker Lane Cove**  
**(02) 9428 1877**

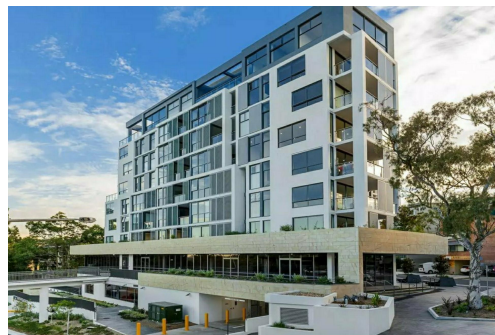
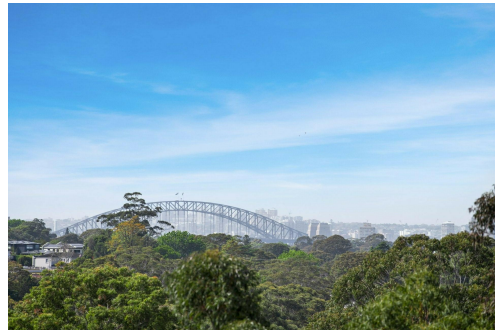
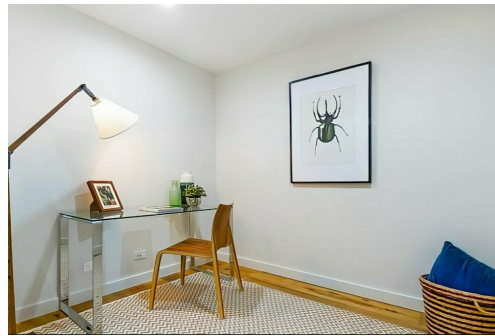
- Master with robes and terrace access, deluxe bathroom
- Flexible office/guest retreat, security car space, storage
- Stroll to the bus, aquatic centre and Pottery Green Oval

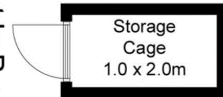
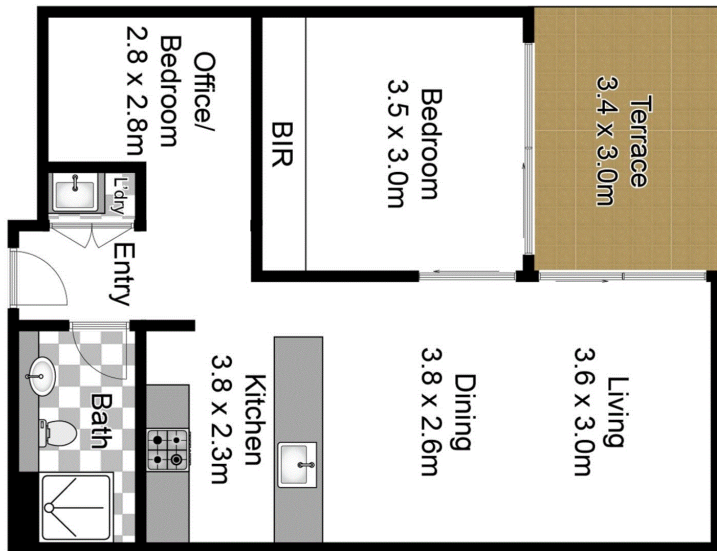
## More About this Property

Property ID	20RJF6A
Property Type	Unit

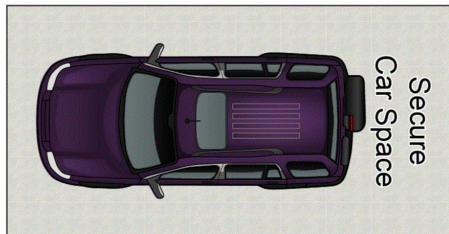
**Kerrie Robertson 0414 495 896**  
 Senior Sales Agent | [krobertson@ljhookerlanecove.com](mailto:krobertson@ljhookerlanecove.com)  
**Stewart Kirkby 0418 672 566**  
 Licensee & Principal | [skirkby@ljhookerlanecove.com](mailto:skirkby@ljhookerlanecove.com)

**LJ Hooker Lane Cove (02) 9428 1877**  
 113 Longueville Road, LANE COVE NSW 2066  
[lanecove.ljhooker.com.au](http://lanecove.ljhooker.com.au) | [lanecove@ljhlc.com.au](mailto:lanecove@ljhlc.com.au)





(Not In Position)



(Not In Position)

