



Landsborough, 69 Hardwood Road

EXPRESSIONS OF INTEREST

ACREAGE WITH 2 GREAT HOMES

Edge of Town acreage with 2 homes and subdivision potential, picturesque green space outlooks, large shed, flowing stream & dam and dual street frontage.

Acreage property (3.83 acres app.) perfectly positioned just a short walk from the centre of the picturesque township of Landsborough, 20 minutes from the best Sunshine Coast Beaches, 50 minutes' drive to Brisbane, airports etc.

Expansive 14,496m² app. land parcel offering not only 2 separate quality homes but also potential for future subdivision, with the possibility of dividing the property into 2 separate house titles and multiple blocks of land (all subject to Council approvals). Current owner has sought pre-lodgement support from Sunshine Coast Council for 2 x 650m² blocks.

On offer we have:

- 3.83 Acres (14,496 m2 app) land parcel with subdivision potential (subject to Council



For Sale
SOLD

View
ljhooker.com.au/AXJ0D

Contact
Jack Cornford
0484 241 803
jack.cornford@ljhooker.com.au



Disclaimer: All information contained therein is gathered from relevant third parties sources. We cannot guarantee or give any warranty about the information provided. Interested parties must rely solely on their own enquiries.

LJ Hooker Beerwah
(07) 5318 7277

approvals) and 2 street frontages.

- 2 separate quality homes
- Large 2 bay shed with workshop area
- Beautifully forested and grassed areas
- Flowing stream and large dam
- Plentiful local wildlife

Home 1 offers.

- 215 m2 app. (7 years new) architecturally designed home
- 3 large bedrooms all with built ins.
- Open plan modern kitchen.
- Good size dining/living area.
- Two screened separate patios - Huge undercover entertaining space, vermin and paw proof screening makes the area ideal for outdoor living or entertaining.
- Modern bathroom with separate toilet.
- 2 car remote access garage with easy access to the house.

Home 2 offers.

- 3 Large bedrooms, main and bedroom 2 with a large walk- in robes.
- Modern kitchen ideally positioned with easy access to the outdoor entertainment area.
- Separate dining area adjacent to the kitchen, with easy access to the outdoor entertainment area, and veranda.
- Large lounge room with high ceilings, pot belly stove, central to the house.
- Family/living room, access to undercover entertainment area with large sliding doors.
- 2 bathrooms and toilets.
- Huge laundry.
- Large Deck on 2 sides of the house for outdoor entertaining with brilliant views of the large property.
- 6mtrs X 6mtr 2 car port.
- Town water, NBN.

Additional features

- 6mtrs X 9mtrs 2 car garage/shed with space for a workshop.

This property provides a rare blend of immediate comfort with exciting future possibilities.

Call Theo today for more information or to organise your own private inspection

More About this Property

Property ID	AXJ0D
Property Type	House
Land Area	3.83 m2
Including	Toilets (3)

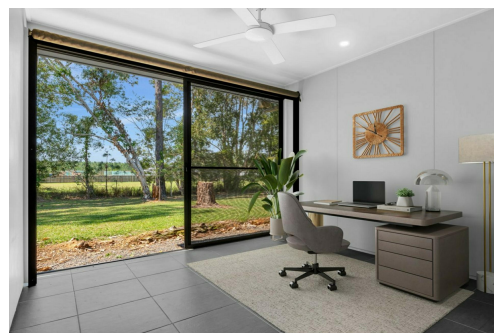
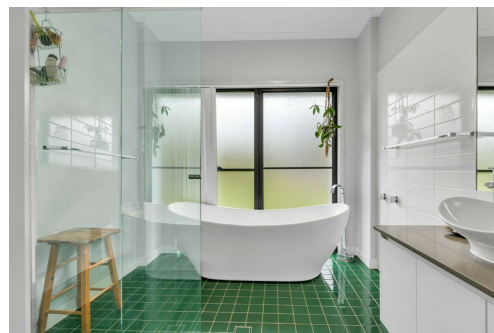
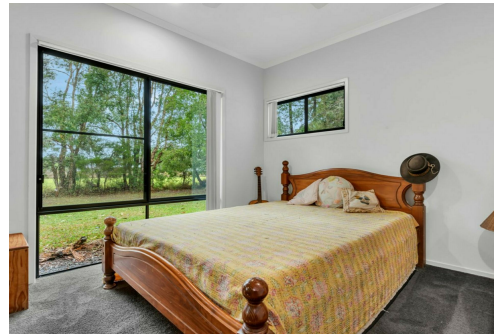
Jack Cornford 0484 241 803

Principal | jack.cornford@ljhooker.com.au

LJ Hooker Beerwah (07) 5318 7277

4/22 Peachester Road, BEERWAH QLD 4519

Beerwah.ljhooker.com.au | beerwah@ljhooker.com.au



Disclaimer: All information contained therein is gathered from relevant third parties sources.
We cannot guarantee or give any warranty about the information provided. Interested parties must rely solely on their own enquiries.

LJ Hooker Beerwah
(07) 5318 7277