

Lakes Entrance, 61 Stirling Drive

SPACIOUS, ELEVATED HOME WITH OCEAN GLIMPSES

Set high on the hill with no neighbours to the front or one side this five bedroom home delivers flexible living and ocean glimpses.

Upstairs features open plan living polished timber floors and a full length deck with views. The main bedroom has a walk in robe ensuite and water views. All other bedrooms have built ins.

Downstairs offers a second living zone with backyard access perfect for teens guests or a home office.

Extras include side access space for a caravan a rendered outdoor BBQ oven and great storage throughout.

- Five bedrooms two bathrooms
- Open plan living second rumpus
- Walk in robe ensuite to main



Disclaimer: All information contained therein is gathered from relevant third parties sources. We cannot guarantee or give any warranty about the information provided. Interested parties must rely solely on their own enquiries.

5

2

2

For Sale
\$750,000 - \$790,000

View
By Appointment

Contact
Al Orellana
0447 965 231
Al.lakesentrance@ljhooker.com.au

LJ Hooker Paynesville | Lakes Entrance | Metung
(03) 5156 6166

- Full length deck with views
- Timber floors loads of storage
- Double carport side access fully fenced
- Great Airbnb history

This one is ready to move into or rent out with nothing to spend and loads of flexibility.
Call now to book your inspection

More About this Property

Property ID	MGRFCA
Property Type	House
Land Area	817 m2
Including	Ensuite Air Conditioning Toilets (2) Fire Place Courtyard Balcony Deck Dishwasher Built-in-Robes Fully Fenced Water Tank

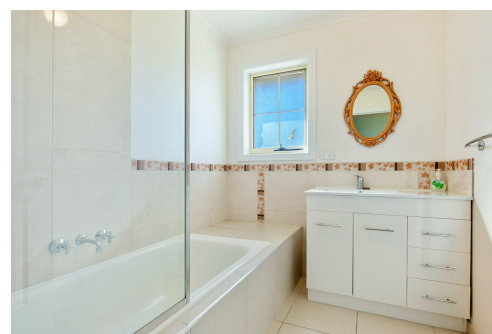
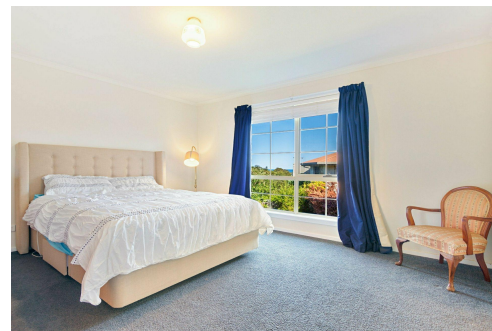
Al Orellana 0447 965 231

Sales Consultant | Al.lakesentrance@ljhooker.com.au

LJ Hooker Paynesville | Lakes Entrance | Metung (03) 5156 6166

25A Esplanade, PAYNESVILLE VIC 3880

paynesville.ljhooker.com.au | paynesville@ljhooker.com.au

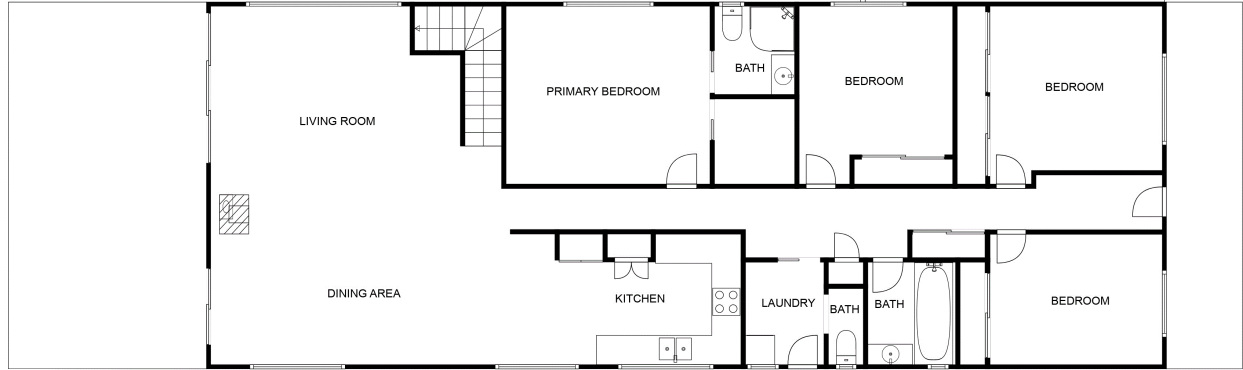
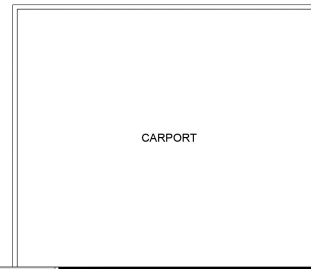


Disclaimer: All information contained therein is gathered from relevant third parties sources.
We cannot guarantee or give any warranty about the information provided. Interested parties must rely solely on their own enquiries.

**LJ Hooker Paynesville | Lakes
Entrance | Metung
(03) 5156 6166**



FLOOR 2



FLOOR 1

FLOOR PLAN CREATED BY CUBICASA APP. MEASUREMENTS DEEMED HIGHLY RELIABLE BUT NOT GUARANTEED.