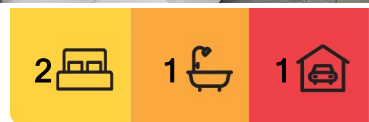


Lakemba, 6/50 Fairmount Street

Sold by LJ Hooker Ashfield | Inner West

This top-floor two-bedroom apartment offers light-filled living, modern updates and a solid brick build that stands the test of time. Perfectly positioned within walking distance to Lakemba Station, Parry Park, and local schools, it's an ideal match for first home buyers, investors and couples chasing convenience without compromise. Updated, low-maintenance and set in a boutique block with minimal common walls, this is a home that delivers comfort, value and long-term appeal.

- Top-floor privacy - enjoy elevated outlook, abundant natural light and great airflow from a quiet front position
- Solid full-brick construction - classic, double-brick design for year-round insulation and no added costs
- Strong rental return - current rent \$560 per week. Tenant can remain, or vacant possession if required.
- Renovated bathroom - floor-to-ceiling tiling, modern fixtures and a walk-in shower offer a



For Sale

Sold by LJ Hooker Ashfield | Inner West

View

By Appointment

Contact

Adrian Abrook

0412 569 800

adrian@ljha.com.au



LJ Hooker Ashfield
(02) 9797 6044

Disclaimer: All information contained therein is gathered from relevant third parties sources. We cannot guarantee or give any warranty about the information provided. Interested parties must rely solely on their own enquiries.

fresh, stylish feel

- Modern eat-in kitchen - functional layout with mosaic tile splashback, electric cooking and ample bench space
- Comfortable bedrooms - both with mirrored built-ins and air conditioning for easy year-round living
- Light-filled living - north-facing lounge opens to a wraparound balcony, perfect for morning sun and relaxation
- Tiled throughout - glossy floor tiles for an easy-care lifestyle with a clean, contemporary look
- Internal laundry - full-sized and separate, making daily chores more convenient
- On-title car space - off-street, registered parking at the rear of the block adds further value and practicality

Located approximately 725m to Lakemba Station, 500m to Parry Park and only minutes to shops, schools and local eateries, this is a fantastic opportunity to secure a move-in ready apartment in one of the Inner South West's most accessible suburbs.

DISCLAIMER: This advertisement contains information provided by third parties. While all care is taken to ensure otherwise, LJ Hooker Ashfield does not make any representation as to the accuracy of the information contained in the advertisement, does not accept and responsibility or liability and recommends that any client make their own investigations and enquiries. All images are indicative of the property only.

More About this Property

Property ID	1A7EF8B
Property Type	Unit

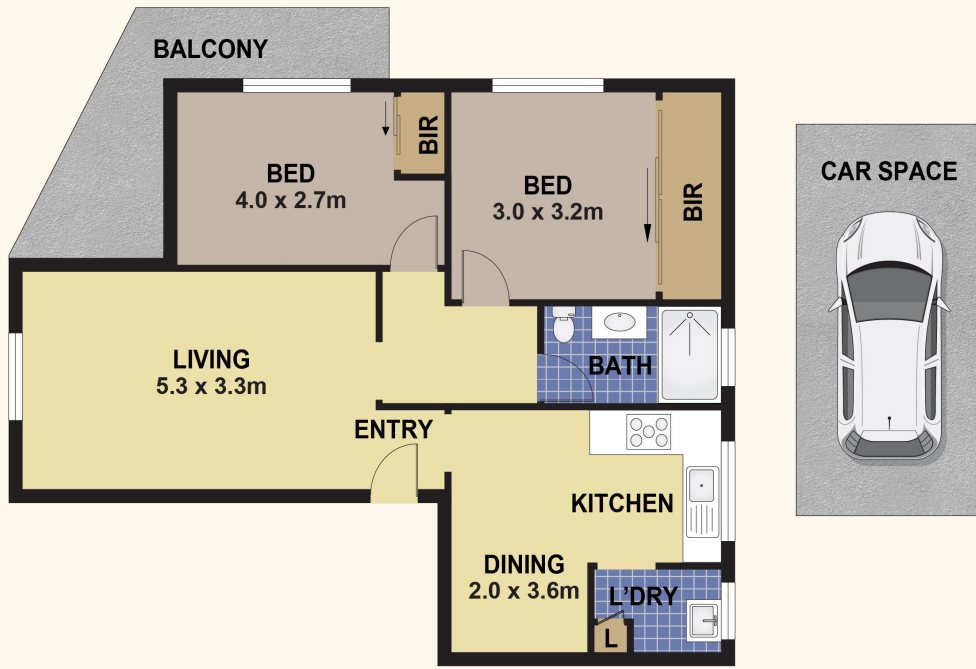
Adrian Abrook 0412 569 800
Sales Manager | adrian@ljha.com.au

LJ Hooker Ashfield (02) 9797 6044
216 Liverpool Road, ASHFIELD NSW 2131
ashfield.ljhooker.com.au | ashfield@ljha.com.au



LJ Hooker Ashfield
(02) 9797 6044

Disclaimer: All information contained therein is gathered from relevant third parties sources. We cannot guarantee or give any warranty about the information provided. Interested parties must rely solely on their own enquiries.



6/50 FAIRMOUNT STREET, LAKEMBA

DISCLAIMER

PLANS SHOWN ARE FOR MARKETING PURPOSES ONLY, ALL DIMENSIONS ARE APPROXIMATE AND NOT TO SCALE. THEY ARE SUBJECT TO ERRORS AND INACCURACIES AND NO LIABILITY WILL BE ACCEPTED. INTERESTED PARTIES SHOULD MAKE THEIR OWN ENQUIRIES.