



## Lakelands, 5 Wasdale Grove

### BIG AND BRICK

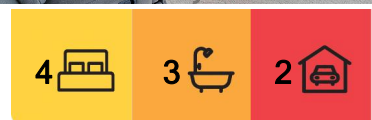
This four-bedroom, brick and tile property is ready for that next purchaser looking to make this substantial family home theirs. With its conveniently located position, only a short walk or drive from the shores of Lake Macquarie, it is in a highly desirable location. Nothing is small in this house, from the master bedroom to the living and dining rooms.

Inground pool and secure rear yard make playing and entertaining a breeze. The timber kitchen services the property from the centre of the house.

- Double garage with internal access
- Additional storage room downstairs
- Set on approx. 725sqm of land
- Main bathroom with separate toilet
- Ample off street parking
- Ceiling fans throughout



**Disclaimer:** All information contained therein is gathered from relevant third parties sources. We cannot guarantee or give any warranty about the information provided. Interested parties must rely solely on their own enquiries.



**For Sale**  
CONTACT AGENT

**View**  
[ljhooker.com.au/Y21HN8](http://ljhooker.com.au/Y21HN8)

**Contact**  
**Cameron Stevenson**  
0407 929 291  
[cameron.stevenson@ljhooker.com.au](mailto:cameron.stevenson@ljhooker.com.au)

**LJ Hooker Warners Bay**  
**(02) 4915 3800**



- 2 Split system A/Cs

The information contained herein has been provided by people we believe to be reliable, however all interested parties must rely on their own enquiries.

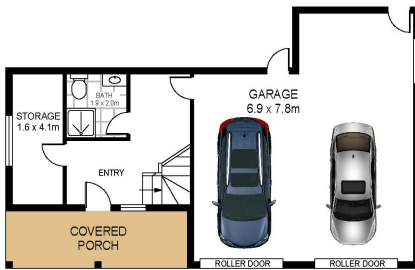
## More About this Property

Property ID	Y21HN8
Property Type	House
Land Area	725.9 m²
Including	Toilets (3)

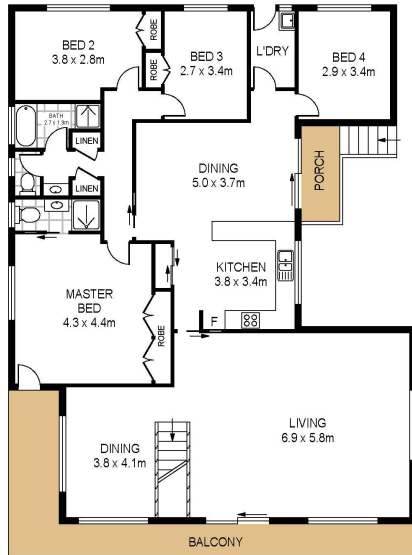
**Cameron Stevenson 0407 929 291**  
 Director - Licensed Sales Executive. Independent Contractor |  
[cameron.stevenson@ljhooker.com.au](mailto:cameron.stevenson@ljhooker.com.au)

**LJ Hooker Warners Bay (02) 4915 3800**  
 Shop 12, 240-260 Hillsborough Rd, WARNERS BAY NSW 2282  
[warnersbay.ljhooker.com.au](http://warnersbay.ljhooker.com.au) | [warnersbay@ljhooker.com.au](mailto:warnersbay@ljhooker.com.au)





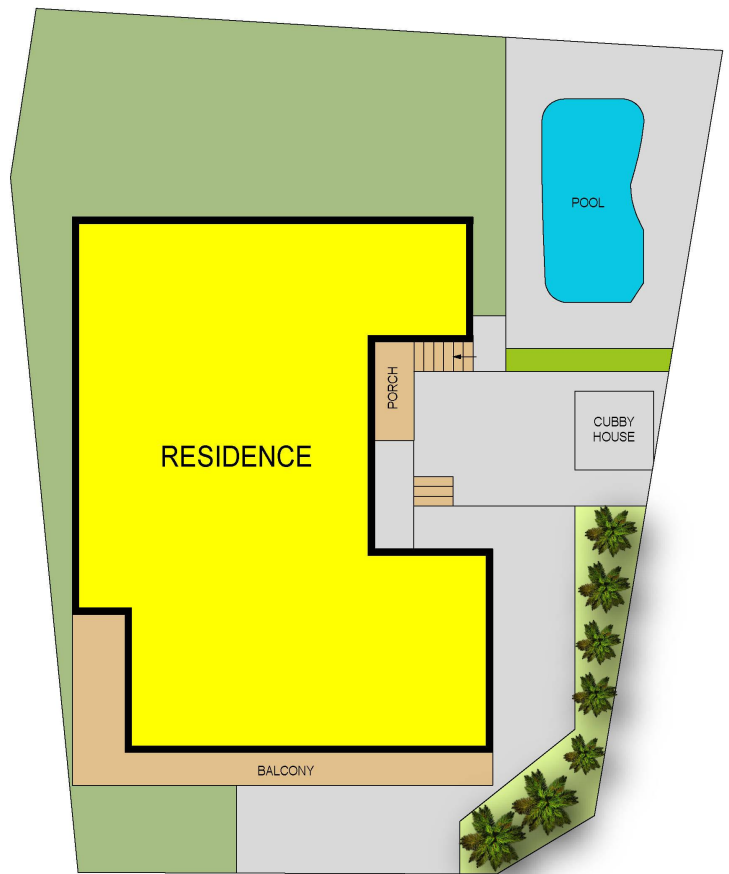
LOWER LEVEL



UPPER LEVEL



5 Wasdale Grove  
Lakelands



Land area Area: 726 sqm

Total Internal Floor Area: 175 sqm

Scale in metres. Indicative only. Dimensions are approximate. All information contained herein is gathered from sources we believe to be reliable. However we cannot guarantee its accuracy and interested persons should rely on their own enquiries



LJ Hooker Warners Bay  
(02) 4915 3800

**Disclaimer:** All information contained therein is gathered from relevant third parties sources.  
We cannot guarantee or give any warranty about the information provided. Interested parties must rely solely on their own enquiries.