

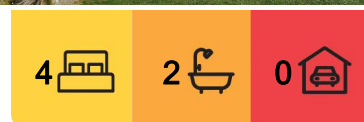


Lake Tekapo, 6 Pollock Place

Forever Views : Lake Tekapo

Discover a world of luxury in this recently renovated gem, meticulously renovated to the highest standards & boasting forever views of the dazzling turquoise waters of Lake Tekapo perfectly framed by a dramatic rugged mountain backdrop. From the moment you step inside, you'll be captivated not only by the mesmerising views but also by the fresh floor coverings & window dressings that adorn every room.

This two-level beauty is perfectly positioned to offer uninterrupted views of the serene Lake Tekapo & the breathtaking alpine vistas that surround it. Attention to detail is evident in every corner, creating a truly exceptional living experience. Extensive use of glass sliders blurs the line between indoor & outdoor living, inviting the natural beauty of the outdoors to become part of your everyday life.



For Sale

Enquiries Over \$1,600,000

View

ljhooker.co.nz/DPKH5T

Contact

Steve Howes

021 801 216

steve@mcre.co.nz



Disclaimer: All information contained therein is gathered from relevant third parties sources. We cannot guarantee or give any warranty about the information provided. Interested parties must rely solely on their own enquiries.

LJ Hooker Twizel
(03) 435 0170

Mackenzie Country Real Estate

Nestled in the coveted Lochinver subdivision, this home sits on a generously sized section that provides ample room for expansion. With spacious open plan living & a modern kitchen on the upper level flowing out to a wraparound balcony making the most of the stunning views plus a second living room on the lower level, this home offers all the amenities you need. The modern & stunning bathrooms add a touch of sophistication, while the four bedrooms offer comfort & style. With the rooms having been virtually staged, this home awaits your personal touch to make it your own. Add your preferred furniture to create your dream space.

A large level lawn along with ample off-street parking complete this highly desirable package.

Whether you're seeking a holiday sanctuary or an investment property with tremendous potential for visitor accommodation, this property has it all. Its elevated position ensures that the views will remain unspoiled for years to come. Don't miss the opportunity to make this your dream home. You are encouraged to contact local sales agent Steve Howes on 021 801 216 without delay.

3D Walkthrough: <https://virtualtour.mcre.co.nz/6PollockPl>

Buyer Enquiry Over \$1,600,000

More About this Property

Property ID	DPKH5T
Property Type	House
House Size	171 m²
Land Area	959 m²
Including	Toilets (1)
Licensed Real Estate Agents (REAA2008)	

Steve Howes 021 801 216

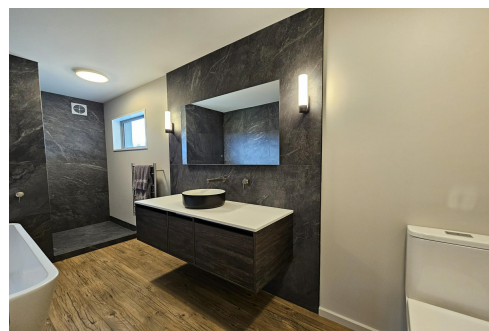
Principal | steve@mcre.co.nz

LJ Hooker Twizel (03) 435 0170

Mackenzie Country Real Estate

20 Ruataniwha Road, TWIZEL 7901

twizel.ljhooker.co.nz | twizel@mcre.co.nz



Disclaimer: All information contained therein is gathered from relevant third parties sources. We cannot guarantee or give any warranty about the information provided. Interested parties must rely solely on their own enquiries.

**LJ Hooker Twizel
(03) 435 0170**

Mackenzie Country Real Estate