

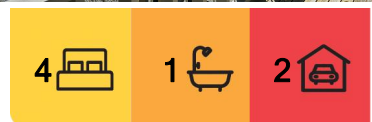


Lake Tekapo, 54 Murray Place

Much to Offer on Murray : Lake Tekapo

Situated on a level section with a spacious private sheltered back garden & backing on to the Tekapo Plantation, this well-maintained two-level dwelling, with much to offer, is perfectly located to enjoy a sense of space which belies its modest footprint. Benefiting from its proximity to the plantation & nestled between well-established plantings on its east & west boundaries, this north-facing home with a large elevated sun-baked northern balcony enjoys glimpses of the shimmering turquoise waters of majestic Lake Tekapo & its dramatic rugged mountain backdrop ... the perfect backdrop for enjoying your morning coffee or hosting gatherings!

The upper level of the home features a spacious living area, seamlessly extended by the balcony, a well-appointed kitchen along with three bedrooms, bathroom & separate toilet. Internal stairs lead to the lower level which features an extra-length single garage equipped with a laundry & external access to the drive-through carport & generous back garden. The highlight of the lower level is the over-sized rumpus room, a versatile space



For Sale
Negotiation

View
ljhooker.co.nz/DR5H5T

Contact
Steve Howes
021 801 216
steve@mcre.co.nz



Disclaimer: All information contained therein is gathered from relevant third parties sources. We cannot guarantee or give any warranty about the information provided. Interested parties must rely solely on their own enquiries.

LJ Hooker Twizel
(03) 435 0170
Mackenzie Country Real Estate

that can be customized to suit your needs —whether it's a fourth bedroom, home office, gym, or a fantastic entertainment zone.

Well located on the section, in addition to the garage & carport, this tidy home boasts an abundance of parking at the front, ensuring convenience for you & your guests. The expansive sheltered garden that extends to a plantation at the rear creates an outdoor oasis offering a perfect blend of tranquillity & privacy, providing an ideal setting for outdoor activities or simply unwinding amidst nature.

Nestled in an established neighbourhood within close proximity to the village amenities, well suited for family enjoyment or to meet the ever-increasing demand for accommodation in Lake Tekapo, this tranquil retreat is waiting for you! Contact local agent Steve Howes on 021 801 216 without delay. Viewing strictly by appointment only.

3D Walkthrough: <https://virtualtour.mcre.co.nz/54MurrayPI>

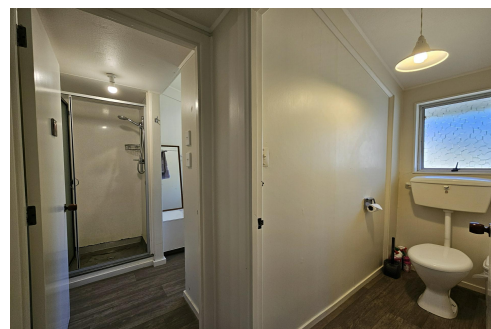
Price by Negotiation

More About this Property

Property ID	DR5H5T
Property Type	House
House Size	180 m ²
Land Area	600 m ²
Including	Balcony
Licensed Real Estate Agents (REAA2008)	

Steve Howes 021 801 216
Principal | steve@mcre.co.nz

LJ Hooker Twizel (03) 435 0170
Mackenzie Country Real Estate
20 Ruataniwha Road, TWIZEL 7901
twizel.ljhooker.co.nz | twizel@mcre.co.nz



Disclaimer: All information contained therein is gathered from relevant third parties sources. We cannot guarantee or give any warranty about the information provided. Interested parties must rely solely on their own enquiries.

LJ Hooker Twizel
(03) 435 0170
Mackenzie Country Real Estate