

## Lake Tekapo, 4 Hamilton Drive

High on Hamilton: Lake Tekapo

Offering uninterrupted, panoramic views to the dazzling turquoise waters of the majestic Lake Tekapo and its ever-dramatic mountain backdrop, this five-bedroom home, perched on an elevated section, with its large north-facing sun-drenched entertainment deck, is bound to catch your eye!

With a timeless mix of cedar and stone cladding, the home features open plan living enhanced by the natural flow to the generous entertainment deck beckoning the sought-after views into the heart of the home. With a log fire and a heat pump, the lounge includes a dining area along with a galley kitchen well-appointed around the corner. A generous bedroom and a single bedroom, enjoy access to a bathroom, featuring a bath, and a separate toilet. A laundry and internal access to the single garage complete the lower level.

On the upper level, an over-sized master bedroom and one of two more bedrooms, feature

5

2

1

**For Sale**  
Negotiation

**View**  
By Appointment

**Contact**  
**Steve Howes**  
021 801 216  
steve@mcre.co.nz



**Disclaimer:** All information contained therein is gathered from relevant third parties sources. We cannot guarantee or give any warranty about the information provided. Interested parties must rely solely on their own enquiries.

**LJ Hooker Twizel**  
**(03) 435 0170**  
Mackenzie Country Real Estate



stunning lake and mountain views. A second bathroom on this level completes the main home. A rumpus room, with internal access along with external access, boasts a private balcony perfect for enjoying the stunning views and enchanting starry skies.

Conveniently located, the home is well-appointed and nestled in an established garden on a corner section with off-street parking.

With its stunning views, enviable elevated perch and corner section appeal, this rare gem offers an unbeatable lifestyle whether seeking a permanent residence or a family holiday escape enjoying majestic Lake Tekapo and its abundance of outdoor activities.

Alternatively, currently enjoying favour as visitor accommodation with consistent earnings and high occupancy rates over many years, it has proven itself as an ideal investment in the ever-increasing Lake Tekapo demand for short-term accommodation. An existing resource consent to operate as visitor accommodation safeguards this option for the future. Contact Steve Howes 021 801 216. Viewing by appointment only.

3D: <https://virtualtour.mcre.co.nz/4Hamilton>

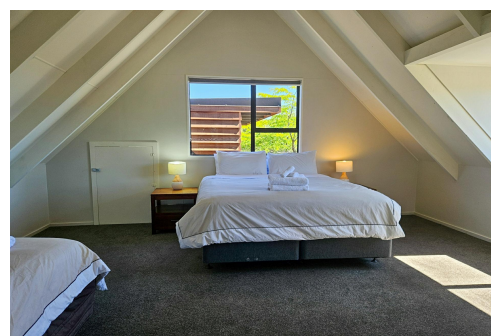
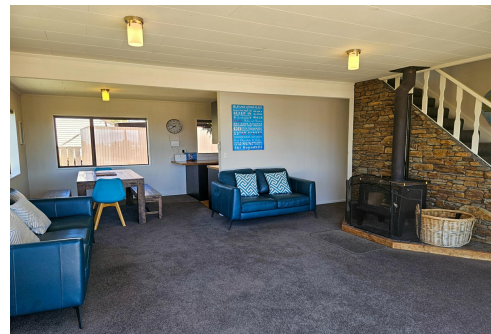
Price by Negotiation

## More About this Property

Property ID	E06H5T
Property Type	House
House Size	203 m2
Land Area	614 m2
Licensed Real Estate Agents (REAA2008)	

**Steve Howes 021 801 216**  
Principal | [steve@mcre.co.nz](mailto:steve@mcre.co.nz)

**LJ Hooker Twizel (03) 435 0170**  
Mackenzie Country Real Estate  
20 Ruataniwha Road, TWIZEL 7901  
[twizel.ljhooker.co.nz](mailto:twizel.ljhooker.co.nz) | [twizel@mcre.co.nz](mailto:twizel@mcre.co.nz)



**Disclaimer:** All information contained therein is gathered from relevant third parties sources. We cannot guarantee or give any warranty about the information provided. Interested parties must rely solely on their own enquiries.

**LJ Hooker Twizel**  
**(03) 435 0170**  
Mackenzie Country Real Estate