



Lake Tekapo, 4 Manning Place

Scenic Serenity Meets Easy Living: Lake Tekapo

This low maintenance haven with unparalleled views is an opportunity not to be missed! Located high in the prestigious Lochinver subdivision, this property boasts panoramic views to the majestic dazzling turquoise waters of Lake Tekapo, Mt John & the impressive backdrop of surrounding mountain vistas. With flexible living options, including a studio, this property affords versatility along with coveted views you will crave! In a picture-perfect setting, discover your perfect retreat & forever enjoy the lake & mountain panoramas.

The home boasts open plan living with the living area complemented by a log burner, a large dining area & a modern kitchen. With its northerly aspect & a generous north-facing patio extending the dining area & inviting the outdoors in, the home enjoys plenty of sunshine & along with a heat pump for those cooler months exudes warmth & ambience all year round. With mesmerizing views by



Disclaimer: All information contained therein is gathered from relevant third parties sources. We cannot guarantee or give any warranty about the information provided. Interested parties must rely solely on their own enquiries.



For Sale

Negotiation

View

ljhooker.co.nz/DHPH5T

Contact

Steve Howes

021 801 216

steve@mcre.co.nz

LJ Hooker Twizel

(03) 435 0170

Mackenzie Country Real Estate

day & the ever-captivating night sky after dark, the living area & deck are truly spoilt with views to inspire.

This desirable home includes 2 bedrooms, a bathroom, a separate toilet & a separate laundry. Add to this, a third bedroom in a spacious master suite enjoying access to the deck & featuring a kitchenette & private ensuite at the eastern end of the home. With external access & an internal lockable door, this suite can be locked off from the rest of the home to serve as a self-contained studio.

With the home well-appointed on the generous sun-drenched north-facing section, there is plenty of space for future development & ample off-street parking.

Low-maintenance, high-view bliss with stunning lake & mountain vistas combined with spacious living & potential for income generation, this modern & comfortable home belies its compact footprint. Currently enjoying favourable returns as short-term visitor accommodation. Contact local sales agent Steve Howes on 021 801 216 today.

3D: <https://virtualtour.mcre.co.nz/4manningpl>

Price by Negotiation

More About this Property

Property ID DPH5T

Property Type House

House Size 132 m²

Land Area 1108 m²

Licensed Real Estate Agents (REAA2008)

Steve Howes

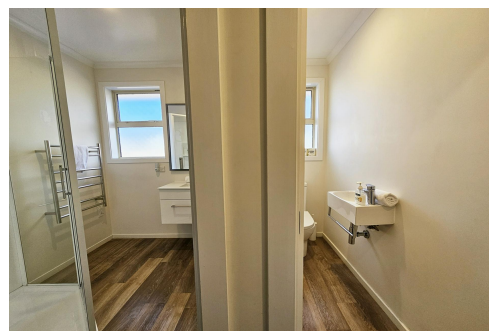
Principal | steve@mcre.co.nz

LJ Hooker Twizel (03) 435 0170

Mackenzie Country Real Estate

20 Ruataniwha Road, TWIZEL 7901

twizel.ljhooker.co.nz | twizel@mcre.co.nz



Disclaimer: All information contained therein is gathered from relevant third parties sources. We cannot guarantee or give any warranty about the information provided. Interested parties must rely solely on their own enquiries.

LJ Hooker Twizel
(03) 435 0170

Mackenzie Country Real Estate