



84/425 Princes Highway, Lake Tabourie

Coastal Living with Direct Beach Access - Pet Friendly Family Escape

Welcome to Site 84 Wairo Beach Holiday Park, Lake Tabourie - a beautifully presented two-bedroom, pet-friendly cabin offering direct beach access and a relaxed coastal lifestyle the whole family can enjoy.

Set within the much-loved Wairo Beach Holiday Park, this cabin features high raked ceilings, creating a serene sense of light, space and comfort. The park itself is renowned for its unique, nostalgic charm, designed like a historic village while offering modern resort-style amenities - making it a favourite South Coast destination for generations of families.

The park combines old-world character with contemporary facilities, all just moments from the sand. A private boardwalk leads directly to Wairo Beach, a breathtaking 5km stretch of coastline extending from Lagoon Head to Lake Tabourie - perfect for long walks, swimming, water sports and soaking up the natural beauty of the South Coast.

Cabin Features

- Two-bedroom cabin located in a quiet street close to all park amenities

2 🏠 1 🚿 1 🚗

FOR SALE
\$110,000

VIEW
By Appointment

AGENTS

Karen Van Der Stelt
0413 221 504
kvanderstelt.batemansbay@ljhooker.com.au

AGENCY

LJ Hooker Batemans Bay
(02) 4472 6455

All information contained therein is gathered from relevant third parties sources.
We cannot guarantee or give any warranty about the information provided.
Interested parties must rely solely on their own enquiries.

 **LJ Hooker**

- Sleeps 4-6 people comfortably
- Main bedroom with queen bed, bedside tables and generous storage
- Second bedroom with built-in triple bunks
- Spacious living room with reverse cycle A/C for year round comfort
- Spacious undercover timber deck perfect for listening to the waves and smelling the salt air and entertaining family & friends
- Dining area seating six people
- Well-appointed kitchen with ample storage and food preparation space
- Updated bathroom
- Instant gas hot water
- Plenty of internal storage throughout
- Large undercover deck complete with BBQ - ideal for entertaining
- External storage shed
- Full-size fold-down clothesline and portable washing machine
- Car space with concrete driveway
- Recently repainted exterior
- Sold fully furnished - move straight in or start enjoying immediately

Key Features of Wairo Beach Holiday Park

- Themed Village Atmosphere: Designed like a historic Cobb & Co town, including a pub, general store and petrol station
- Direct Beachfront Access via boardwalk to Wairo Beach
- Pet Friendly
- Outstanding Family Amenities including:
 - Resort-style swimming pool
 - Water splash park
 - Jumping pillow
 - Children's playground
 - Mini-golf
 - Tennis and basketball courts
 - Camp kitchens and BBQ areas
 - Reception and secure boom gate entry

Park Fees

- Approximately \$879 per month
- Plus gas and electricity based on usage

NB: You can use your holiday cabin 180 days a year, come and go as you please, lock up and leave (you cannot live in full time or generate an income from the property ie no air bnb - just for private use only)

This is a rare opportunity to secure a low-maintenance coastal retreat in one of the South Coast's most iconic holiday parks - perfect for family holidays, weekend escapes or a lifestyle by the beach. Call to arrange an inspection at your earliest opportunity.

Disclaimer: All care has been taken in the preparation of this marketing material, and details have been obtained from sources we believe to be reliable. LJ Hooker do not however guarantee the accuracy of the information, nor accept liability for any errors. Interested persons should rely solely on their own enquiries and legal advice.

MORE DETAILS

Property ID 12RSF8F
Property Type House

Karen Van Der Stelt 0413 221 504

Licensed Real Estate Agent / Auctioneer / Stock & Station Agent |
kvanderstelt.batemansbay@ljhooker.com.au

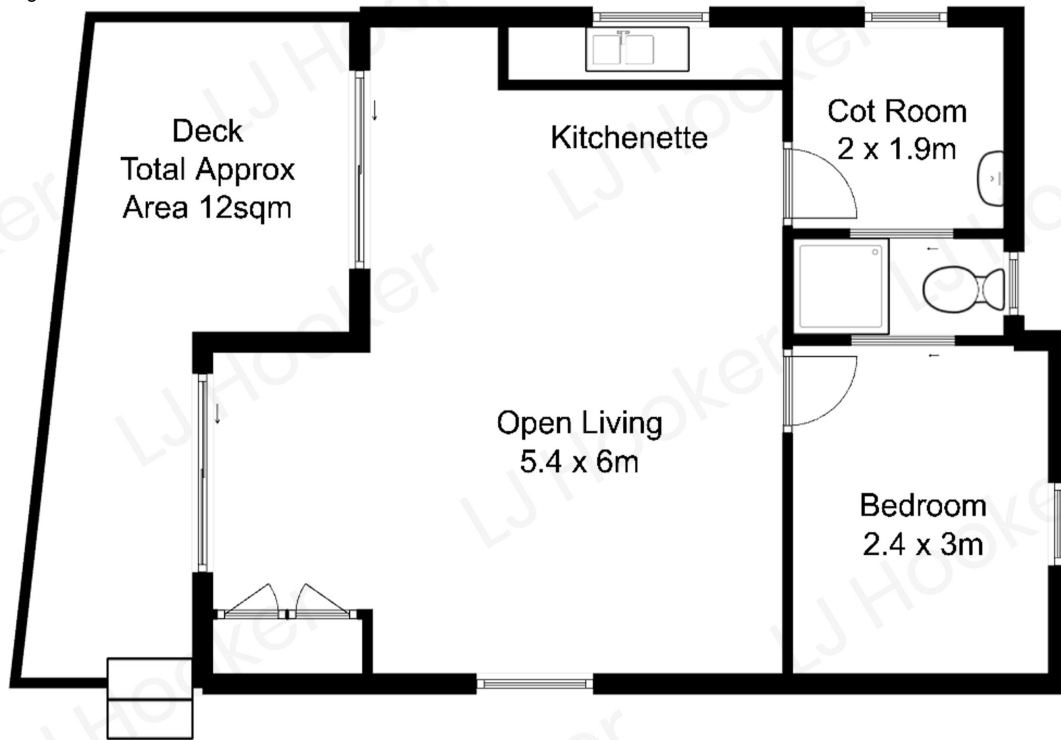
LJ Hooker Batemans Bay (02) 4472 6455

Cnr Beach Road & Orient Street, BATEMANS BAY NSW 2536
batemansbay.ljhooker.com.au | batemansbay@ljhooker.com.au



All information contained therein is gathered from relevant third parties sources.
We cannot guarantee or give any warranty about the information provided.
Interested parties must rely solely on their own enquiries.

Total Approximate Area
61 square metres
Including deck



All measurements are approximate and are intended as a guide only

