

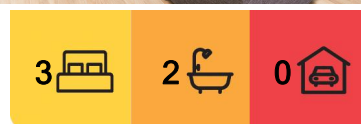


## Lake Ohau, 110A Ohau Drive

### Ohau Retreat With Lake Views!

Nestled in the picturesque Lake Ohau village in Mackenzie Country, this elevated residence boasts stunning Lake Ohau, Lake Middleton and mountain views. The home sits on a large 1,384 sqm (more or less) section landscaped with native planting. As you step inside you are greeted by the light-filled open plan kitchen, dining and living area with high, vaulted ceilings, designed to embrace the breathtaking lake and mountain views. With seamless indoor-outdoor flow, large triple sliding doors lead you to the expansive 130 sq m (more or less) entertaining deck with stainless steel hot tub, allowing you to fully immerse yourself in the beauty of nature.

The 132 sq m (more or less) home provides three spacious bedrooms, an open kitchen, dining and living space with a log burner and two luxurious, fully tiled bathrooms plus a separate powder room. The master super-king bedroom has its own en-suite and sliding doors with direct access to the outdoor entertaining deck. The other two bedrooms have stunning views of Lake Ohau, built-in wardrobes and share a family bathroom. There is



**For Sale**  
\$1,275,000

**View**  
By Appointment

**Contact**  
**Karan MacDiarmid**  
027 517 7959  
karan@mcre.co.nz

**Jess Mackay**  
027 902 5529  
jess@mcre.co.nz



**Disclaimer:** All information contained therein is gathered from relevant third parties sources. We cannot guarantee or give any warranty about the information provided. Interested parties must rely solely on their own enquiries.

**LJ Hooker Twizel**  
**(03) 435 0170**  
Mackenzie Country Real Estate



also a separate media, office or play area for family convenience. In addition to the log burner, the home has two heat pump systems for cosy winter ski trips! The home comes fully furnished with everything needed to immediately make yourself at home.

It has been run as a successful Airbnb since 2015, with generous financial returns and fully audited accounts available. Just minutes from all that Lake Ohau and Lake Middleton have to offer including Ohau Snow Fields, Alps2Ocean Cycle Trail, hiking trails in the Ruataniwha Conservation Park, the lake foreshore access to swimming, boating and fishing, this home provides a cleverly crafted, elevated position in an exceptional location for holiday gatherings. 110a Ohau Drive is a popular option for visitors to come and enjoy this pristine environment that we all love. So get in touch today and to receive the property file. If you wish to view please remember to give us notice so we can find a suitable time to make the appointment as this property is a popular destination with holiday visitors.

House Size: 132m2

Land Size: 1384m2

Zoning: Residential

## More About this Property

<b>Property ID</b>	DVQH5T
<b>Property Type</b>	House
<b>House Size</b>	132 m2
<b>Land Area</b>	1384 m2
<b>Licensed Real Estate Agents (REAA2008)</b>	

**Karan MacDiarmid 027 517 7959**

Salesperson | [karan@mcre.co.nz](mailto:karan@mcre.co.nz)

**Jess Mackay 027 902 5529**

Salesperson | [jess@mcre.co.nz](mailto:jess@mcre.co.nz)

**LJ Hooker Twizel (03) 435 0170**

Mackenzie Country Real Estate

20 Ruataniwha Road, TWIZEL 7901

[twizel.ljhooker.co.nz](mailto:twizel.ljhooker.co.nz) | [twizel@mcre.co.nz](mailto:twizel@mcre.co.nz)



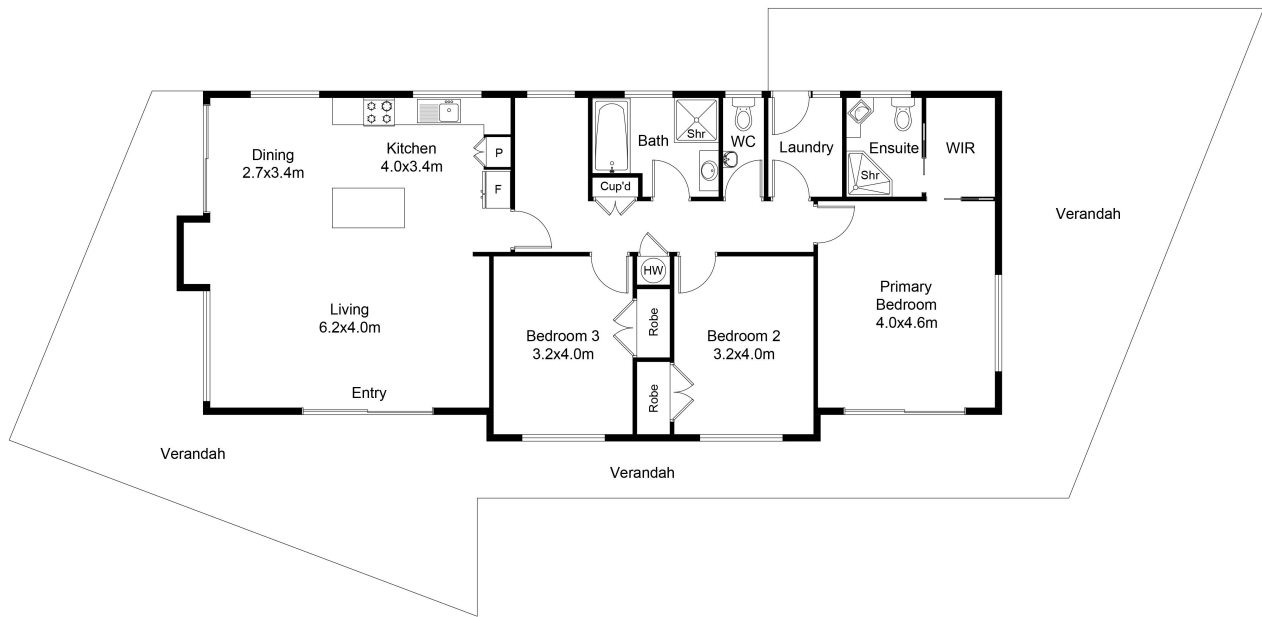
**Disclaimer:** All information contained therein is gathered from relevant third parties sources.

We cannot guarantee or give any warranty about the information provided. Interested parties must rely solely on their own enquiries.

**LJ Hooker Twizel**

**(03) 435 0170**

Mackenzie Country Real Estate



FLOOR PLAN

110A Ohau Drive, Lake Ohau