



102 Lakes Drive, Laidley Heights

102 Lakes Drive - Elevated with Views on 6000sqm

Auction Location: On site

Calling all first home buyers, retirees, and investors!
Yes, the home could use some love and a fresh coat of paint, but imagine the potential once you add your personal touch.

This brick home offers:
o3 bedrooms and 1 bathroom
oWrap-around verandahs
oElevated position at the back of the block for peace, privacy, and outlook
oTwo-bay shed plus established fruit trees

Set on a spacious 6000sqm block, this is your chance to secure a property with lifestyle appeal and plenty of future promise.

To be auctioned on-site 24th October 2025 at 2.00pm

To inspect call Janette Lewis on 0407 144 403 or come to one of the open homes.

3 1 2

AUCTION

Fri 24th Oct @ 2:00PM

VIEW

Sat 4th Oct @ 10:30AM - 11:00AM

AGENTS

Janette Lewis
0407 144 403
jlewis@ljhplainland.com.au

AGENCY

LJ Hooker Plainland | Laidley
(07) 5411 4960

All information contained therein is gathered from relevant third parties sources.
We cannot guarantee or give any warranty about the information provided.
Interested parties must rely solely on their own enquiries.



MORE DETAILS

Property ID	HFZHBC
Property Type	House
Land Area	6000 m2

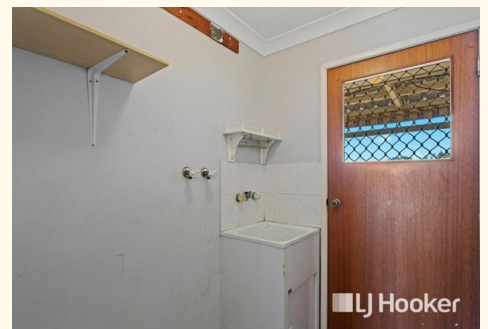
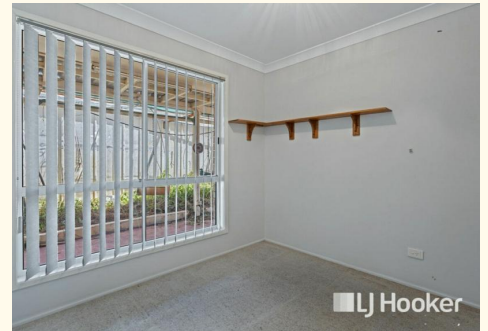
Janette Lewis 0407 144 403

Sales Consultant | jlewis@ljhplainland.com.au

LJ Hooker Plainland | Laidley (07) 5411 4960

Shop 1/16 Gehrke Road, PLAINLAND QLD 4341

laidley.ljhooker.com.au | plainland@ljhplainland.com.au



All information contained therein is gathered from relevant third parties sources.
We cannot guarantee or give any warranty about the information provided.
Interested parties must rely solely on their own enquiries.