

## Lachlan, 680 Lachlan Road

Life styler, hobby farmer and separate multi -generational living

Escape to the Serenity of Country Living

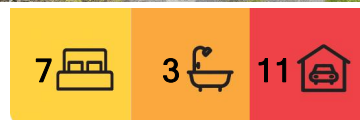
Welcome to Birchwood. Nestled amidst the tranquil beauty of Lachlan, this spacious country residence plus a 3-bedroom studio cottage and 3 door barn offers a perfect blend of comfort and generosity of proportions. Set on a sprawling 3.88-hectare estate. Experience the warmth of rural life without sacrificing modern conveniences in this well-maintained home that promises a lifestyle of peace and privacy.

Key Features:

- Spacious 4-bedroom family home with built-in robes
- 3 Bedroom studio cottage for the extended family
- Master bedroom featuring an ensuite for added privacy
- 3 well-appointed bathrooms to cater to family and guests



**Disclaimer:** All information contained therein is gathered from relevant third parties sources. We cannot guarantee or give any warranty about the information provided. Interested parties must rely solely on their own enquiries.



**For Sale**  
Please Call

**View**  
[ljhooker.com.au/5WZ4FCS](http://ljhooker.com.au/5WZ4FCS)

**Contact**  
**Alison Rogers**  
0409 220 211  
[arogers@ljhookerpinnacle.com](mailto:arogers@ljhookerpinnacle.com)  
**Jeff Hamilton**  
0404 888 538  
[jhamilton@ljhookerpinnacle.com](mailto:jhamilton@ljhookerpinnacle.com)

**LJ Hooker Pinnacle Property**  
**(03) 6272 8177**



- Generous living areas with a cosy fireplace, perfect for chilly evenings
- White timber kitchen with ample storage and bench space
- Separate dining area with stunning garden views
- 3-door American barn-style garage with 3 phase power, ensuring plenty of space for vehicles and storage and the home workshop
- Expansive covered outdoor entertaining area overlooking lush gardens
- Fully enclosed and covered courtyard and beautifully landscaped garden ideal for relaxation
- Vast land area of 3.88 hectares, offering endless possibilities for outdoor activities

This property is a true gem for those seeking the idyllic country lifestyle with the convenience of being close to local amenities. The expansive outdoor spaces provide a safe haven for children to play and explore, while adults will appreciate the tranquillity and the potential for gardening or small-scale farming.

Don't miss the opportunity to make this slice of country paradise your own. Contact us today to arrange a viewing and take the first step towards your dream of a peaceful country living in Lachlan.

## More About this Property

Property ID	5WZ4FCS
Property Type	House
House Size	225 m²
Land Area	3.88 hectare
Including	Ensuite Air Conditioning Toilets (3) Fire Place Courtyard Dishwasher Outdoor Entertaining Workshop Built-in-Robes Secure Parking Fully Fenced Water Tank Solar Hot Water Wood Heater

**Alison Rogers 0409 220 211**  
 Pinnacle Partner | Property Representative | arogers@ljhookerpinnacle.com  
**Jeff Hamilton 0404 888 538**  
 Property Representative | jhamilton@ljhookerpinnacle.com

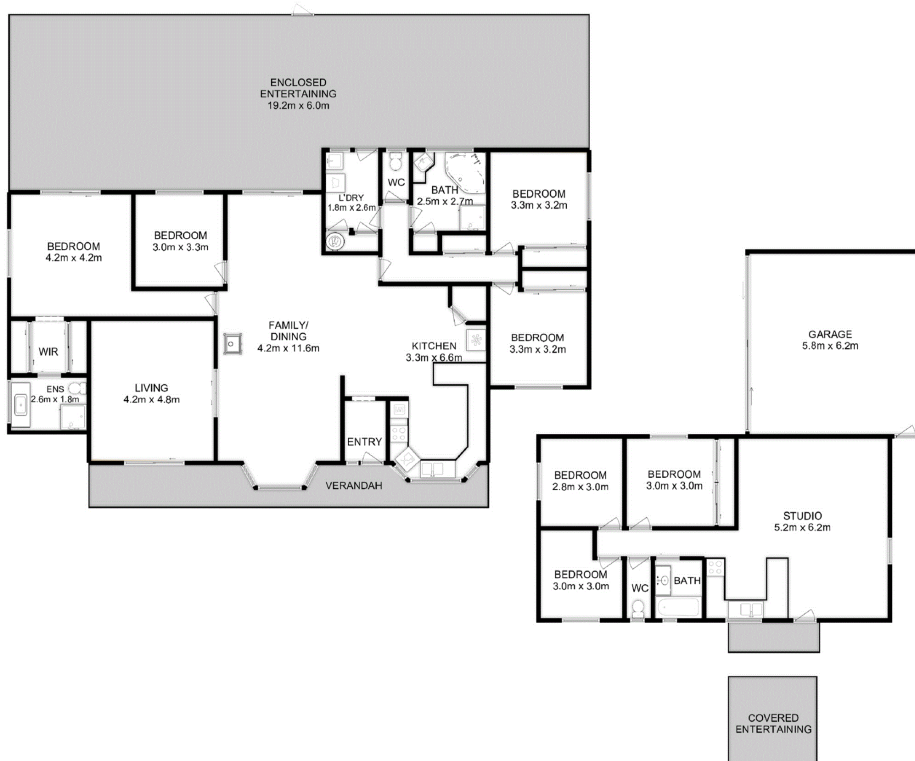
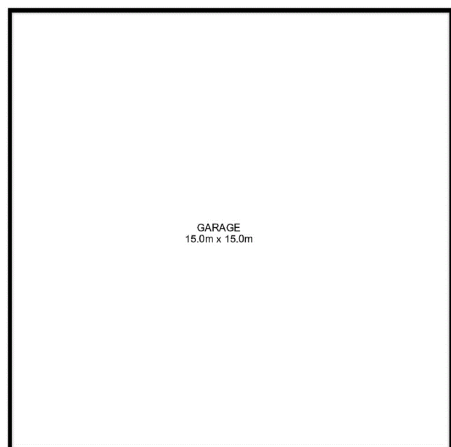
**LJ Hooker Pinnacle Property (03) 6272 8177**  
 402 Main Road, GLENORCHY TAS 7010  
 pinnacleproperty.ljhooker.com.au | hello@ljhookerpinnacle.com



**Disclaimer:** All information contained therein is gathered from relevant third parties sources. We cannot guarantee or give any warranty about the information provided. Interested parties must rely solely on their own enquiries.



**LJ Hooker Pinnacle Property**  
**(03) 6272 8177**



Total Approx. House Area : 188 sqm

Total Approx. Studio/Garage Area : 129 sqm

Total Approx. Garage/workshop Area : 225 sqm

All measurements are internal and approximate.  
This plan is a sketch for illustration, not valuation.  
Produced by Open2view.com