

Labrador, 19/170 Whiting Street

Spacious Townhouse with Modern Comforts in Central Labrador

* SUNDAY 6/7 OPEN HOME CANCELLED*

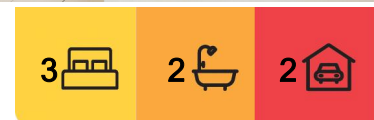
Perfectly positioned in a quiet, well-maintained complex, this spacious double-story townhouse offers a lifestyle of comfort, functionality, and convenience. Whether you're looking to upsize, invest, or secure your first home, this property ticks all the boxes.

Property Features You'll Love:

- Three generous bedrooms with built-in wardrobes and ceiling fans
- Master suite with walk-in robe, ensuite, and its own private balcony
- Two stylish bathrooms upstairs plus a powder room downstairs off the internal laundry
- Light-filled open-plan living and dining area with air conditioning and ceiling fans
- Modern kitchen with dishwasher, plenty of bench space and cupboard storage
- Study nook upstairs —ideal for working from home or student use



Disclaimer: All information contained therein is gathered from relevant third parties sources. We cannot guarantee or give any warranty about the information provided. Interested parties must rely solely on their own enquiries.



For Sale
Offers Over \$769,000

View
By Appointment

Contact
Ben Latimer
0402 921 314
blatimer.southport@ljhooker.com.au
Alex McCormack
0411 510 099
amccormack.southport@ljhooker.com.au

LJ Hooker Southport
(07) 5591 5222

- Linen closet upstairs for added storage convenience
- Double lock-up garage with internal access and an extra storage cupboard
- Private outdoor courtyard perfect for relaxing or entertaining
- Stay comfortable year-round with air conditioning and ceiling fans throughout, ensuring a pleasant environment no matter the season.

Location Highlights:

- Walk to local cafés, parks, shops, and public transport
- A short drive to the Broadwater, Gold Coast University Hospital & Griffith University
- Easy access to major roads and the M1
- Close to schools, childcare, and shopping precincts

Key Financial Information:

- Rental Appraisal: \$750 - \$780 per week approx
- Body Corporate: \$98.16 per week approx
- Council Rates: \$2,640 per year approx
- Water Rates: \$1,710 per year approx

This is an exceptional opportunity to secure a well-appointed home in a high-demand area. Move straight in or invest with confidence in one of Labrador's most central pockets. Don't miss your chance to inspect. Contact Ben today to arrange a viewing!

More About this Property

Property ID	102DF4K
Property Type	Townhouse
Including	Study Air Conditioning Toilets (3) Intercom Courtyard Balcony Dishwasher Outdoor Entertaining Built-in-Robes Secure Parking Remote Garage

Ben Latimer 0402 921 314

Sales Consultant/Director | blatimer.southport@ljhooker.com.au

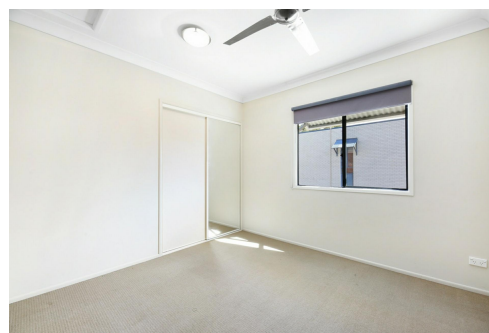
Alex McCormack 0411 510 099

Principal/Licensee | amccormack.southport@ljhooker.com.au

LJ Hooker Southport (07) 5591 5222

2308-2309 Level 3 Southport Central, Tower 2, 5 Lawson Street, SOUTHPORT QLD 4215

southport.ljhooker.com.au | southport@ljhooker.com.au



LJ Hooker Southport
(07) 5591 5222

Disclaimer: All information contained therein is gathered from relevant third parties sources. We cannot guarantee or give any warranty about the information provided. Interested parties must rely solely on their own enquiries.

19/170 Whiting Street
Labrador

Internal 136m²
External, Garage 49m²
Total 185m²

-  3 Bed + Study Nook
-  2.5 Bath
-  2 Car

 LJ Hooker
Southport

BEN LATIMER 0402 921 314

**BIANCO
STUDIO**

Disclaimer

This floor plan is a detailed representation created to enhance your understanding of the property's potential. While we strive for accuracy, dimensions are approximate and should be verified for complete assurance.



Ground Floor Plan



First Floor Plan

 LJ Hooker

LJ Hooker Southport
(07) 5591 5222

Disclaimer: All information contained therein is gathered from relevant third parties sources. We cannot guarantee or give any warranty about the information provided. Interested parties must rely solely on their own enquiries.