

Labrador, 4 Palmer Drive

759m2 Plot in Chirn Park

A rare opportunity presents itself to purchase the largest block on Palmer Drive in the exclusive and vibrant Chirn Park.

Updated, yet still maintaining it's old school charm, this 3-bedroom home is ready for the new owners to take the keys and give it an update or reap the rewards of the development opportunity in a highly sought after pocket of the Gold Coast.

Featuring:

- Rare, flat 759m2 allotment with excellent development potential
- Popular Chirn Park location
- Luscious Mango Tree
- Single lock up garage and single carport
- Spacious kitchen with plenty of bench and storage space
- Walking distance to bus stops
- Close to Musgrave Hill State School and Southport State High



Disclaimer: All information contained therein is gathered from relevant third parties sources. We cannot guarantee or give any warranty about the information provided. Interested parties must rely solely on their own enquiries.

3

1

2

For Sale

Offers Over \$1,000,000

View

ljhooker.com.au/ZB5F4K

Contact

Ben Latimer

0402 921 314

blatimer.southport@ljhooker.com.au

Alex McCormack

0411 510 099

amccormack.southport@ljhooker.com.au

LJ Hooker Southport
(07) 5591 5222

-Tenants in place paying \$550 per week with a rental appraisal of: \$750 - \$800 per week approx.

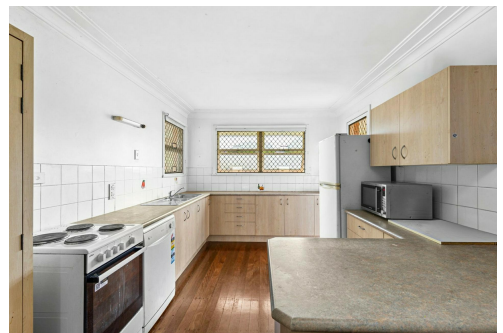
If you're looking for your next renovator, or next development project, then look no further. Contact Ben on 0402 921 314 to secure this prime opportunity.

More About this Property

Property ID	ZB5F4K
Property Type	House
Including	Air Conditioning

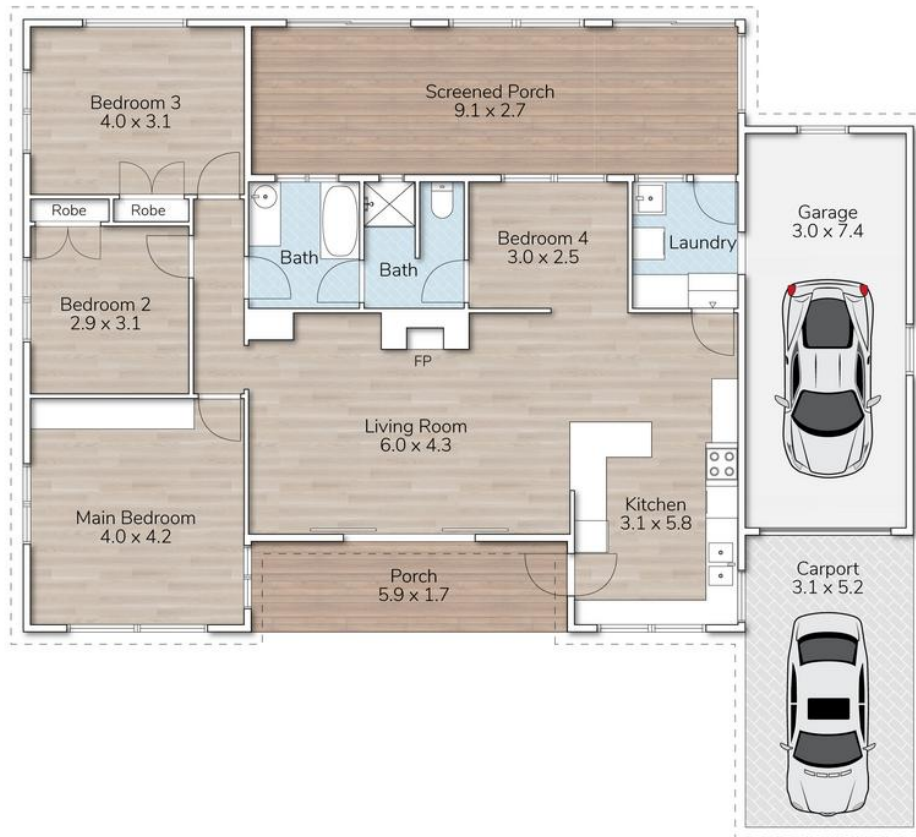
Ben Latimer 0402 921 314
Sales Consultant/Director | blatimer.southport@ljhooker.com.au
Alex McCormack 0411 510 099
Principal/Licensee | amccormack.southport@ljhooker.com.au

LJ Hooker Southport (07) 5591 5222
2308-2309 Level 3 Southport Central, Tower 2, 5 Lawson Street, SOUTHPORT
QLD 4215
southport.ljhooker.com.au | southport@ljhooker.com.au



Disclaimer: All information contained therein is gathered from relevant third parties sources. We cannot guarantee or give any warranty about the information provided. Interested parties must rely solely on their own enquiries.

LJ Hooker Southport
(07) 5591 5222



4 PALMER DRIVE, LABRADOR

This floor plan is for marketing purposes only. Dimensions and layout are approximate. Mountfort Media gives no guarantee or warranty over the accuracy of this plan.



INTERNAL AREA:	111M ²	
EXTERNAL AREA:	74M ²	
TOTAL AREA:	185M ²	
		
4	2	2