



Kurwongbah, 8 Highgrove Court

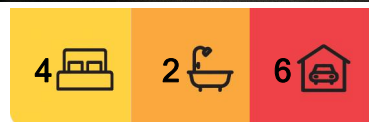
DISPLAY HOME PRESENTATION/ 9M X 6M SHED/
705M2 CUL-DE-SAC BLOCK

Welcome to your ideal family haven, where comfort and convenience meet style and functionality. This exceptional property boasts a range of premium features that will make every day feel like a retreat.

Property Highlights:

* **Spacious Living:** This quality home offers 4 generously sized double bedrooms, including a luxurious main bedroom complete with an ensuite and a walk-in robe. Enjoy the comfort of air-conditioning throughout the lounge and dining areas, as well as a separate family room for additional relaxation.

* **Gourmet Kitchen:** The heart of the home features a well-appointed kitchen with top-of-the-line appliances, including a dishwasher and gas cooktop. A full-length breakfast bar



For Sale
For Sale

View
ljhooker.com.au/26FBF39

Contact
Liam Booker
0403 340 246
lbooker@ljh-kallangur.com.au
Simon Booker
0403 340 240
sbooker@ljh-kallangur.com.au



Disclaimer: All information contained therein is gathered from relevant third parties sources. We cannot guarantee or give any warranty about the information provided. Interested parties must rely solely on their own enquiries.

LJ Hooker Kallangur | Murrumba Downs
(07) 3204 4666

provides a perfect spot for casual meals and gatherings.

* **Outdoor Entertaining:** Step outside to a large, private under-roof outdoor entertainment area, ideal for hosting family and friends. Overlooking the manicured backyard, this space is perfect for year-round enjoyment.

* **Ample Storage & Versatility:** The property includes not one, but two sheds-a garden shed for your tools and a substantial 9m x 6m powered shed for additional storage or hobbies.

* **Eco-Friendly Features:** Benefit from solar power and insulation adding both efficiency and sustainability to your home.

* **Convenient vehicle Access:** The property has drive through garage access, making it easy to house additional cars, trailers, etc. in the 9m x 6m powered shed.

* **Prime Location:** Situated on an elevated 705m² block with meticulously manicured landscaping, in a cul-de-sac location. You'll be within a short distance of local schools, shops, daycare facilities, both Petrie and Dakabin train stations plus Sunshine Coast University Petrie Campus.

Disclaimer:

"Information contained on any marketing material, website or other portal should not be relied upon. You should make your own enquiries and seek your own independent advice with respect to any property advertised or the information about the property."

"LJ Hooker Property Connections also offer a property management service. If you're considering renting your property, are looking to buy or would like a free review of your current portfolio, please call our main office on (07) 32044666."

More About this Property

Property ID	26FBF39
Property Type	House
Land Area	705 m ²
Including	Ensuite Air Conditioning Toilets (2) Outdoor Entertaining Solar Panels

Liam Booker 0403 340 246

Salesperson | lbooker@ljh-kallangur.com.au

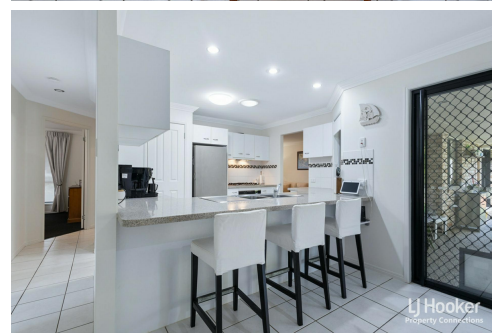
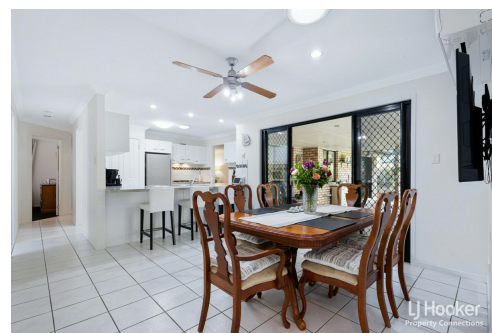
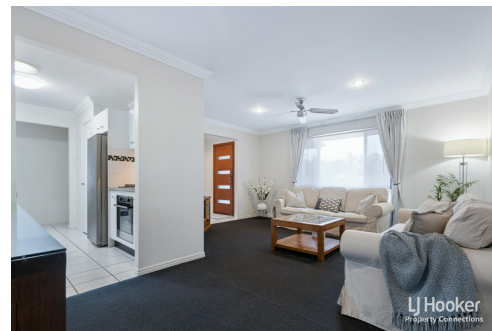
Simon Booker 0403 340 240

Salesperson | sbooker@ljh-kallangur.com.au

LJ Hooker Kallangur | Murrumba Downs (07) 3204 4666

1427 Anzac Avenue, KALLANGUR QLD 4503

kallangurmurrumbadowns.ljhooker.com.au | LJHooker@LJH-Kallangur.com.au



Disclaimer: All information contained therein is gathered from relevant third parties sources.

We cannot guarantee or give any warranty about the information provided. Interested parties must rely solely on their own enquiries.

**LJ Hooker Kallangur | Murrumba Downs
(07) 3204 4666**



SITE PLAN



FLOOR PLAN