



4/10 Saxton Street, Kurri Kurri

LOADED WITH VALUE

Entry level single level unit in a quite and convenient setting for first home buyers and investors alike. This spacious villa offers open plan living, highlighted by high vaulted ceilings and perfectly positioned next to private carport parking. The tidy kitchen features plenty of bench space and pantry. Includes 2 generous bedrooms and a centrally located bathroom/laundry area. Perfect entry-level priced property in sought after location that is priced for immediate sale.

- 2 bedroom villa
- Quite cul-de-sac location
- Strata title
- Close to school
- Single level
- Covered private car space

The information contained herein has been provided by people we believe to be reliable, however all interested parties must rely on their own enquiries.

2 🏠 1 🚿 1 🚗

FOR SALE
CONTACT AGENT

AGENTS

David Magin
0412 685 917
david.magin@ljhooker.com.au

Maya O'Brien
0423 962 399
maya.obrien@ljhooker.com.au

AGENCY

LJ Hooker Lake Macquarie
(02) 4915 3800

All information contained therein is gathered from relevant third parties sources. We cannot guarantee or give any warranty about the information provided. Interested parties must rely solely on their own enquiries.

 **LJ Hooker**

MORE DETAILS

Property ID ZCJF7Q
Property Type Unit
Including Toilets (1)

David Magin 0412 685 917

Senior Sales Executive | david.magin@ljhooker.com.au

Maya O'Brien 0423 962 399

Sales Associate | maya.obrien@ljhooker.com.au

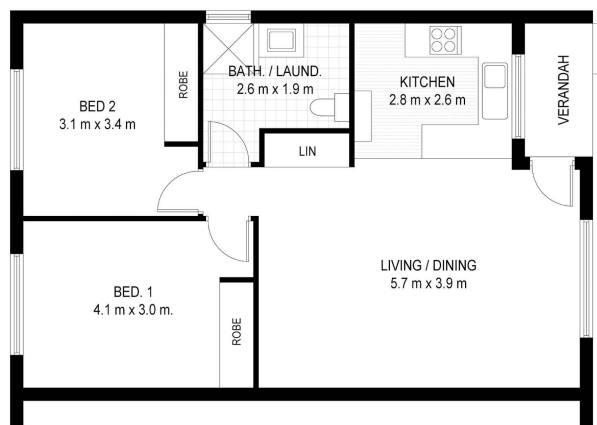
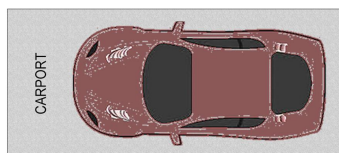
LJ Hooker Lake Macquarie (02) 4915 3800

Shop 12, 240-260 Hillsborough Road, WARNERS BAY NSW 2282

lakemacquarie.ljhooker.com.au | warnersbay@ljhooker.com.au



All information contained therein is gathered from relevant third parties sources.
We cannot guarantee or give any warranty about the information provided.
Interested parties must rely solely on their own enquiries.

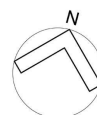


Floor Plan
Total Approx. Internal Floor Area: 61 sqm



4/10 Saxton St
Kurri Kurri

0 m. 1 2 3 4 5



Measurements and direction of north are approximate and are to be used as a guide only.