



17 King Street, Kuraby

SOLD BY FARAZ PEYMAN & LING LI

Tastefully renovated in the past but more recently furnished with flash new flooring, this beautifully presented 4-bedroom family home also boasts a super location, walking distance to Underwood Plaza, parks and city-bound public transport.

Highlights:

- Premium polished tiling through multiple ground floor living areas, the kitchen & laundry
- New durable honey-hued hybrid timber floors through the upstairs bedrooms
- Central kitchen flanked by a family living/casual meals and formal lounge/dining room
- Huge bay-windowed master with a rain shower in its full-height tiled ensuite
- Family bathroom, downstairs powder room, double garage, airy alfresco patio, solar panels

The amount of social space here, outside and under the attractive multi-gabled main roof, is truly next level. Sitting between the combined air-conditioned family living/casual meals area and an open-plan formal dining room and lounge, the renovated modern kitchen can easily cater to any indoor occasion. A huge space that will

4  2  2 

FOR SALE

Please Call

AGENTS

Faraz Peyman
0424771557
farazpeyman@ljhpp.com.au

Ling Li
0450 450 703
lingli@ljhpp.com.au

AGENCY

LJ Hooker Property Partners
07 3344 0288

All information contained therein is gathered from relevant third parties sources.
We cannot guarantee or give any warranty about the information provided.
Interested parties must rely solely on their own enquiries.

 **LJ Hooker**

suit 'landscape cooks', it's equipped with expansive clear countertops over contrasting dark-finished cabinetry, an XL gas cooker/oven, dual-drawer dishwasher and elegant gooseneck tap.

When the weather calls for alfresco affairs, it'll be a cinch to deliver food to those feasting under the covered outdoor patio off the family room, or under the evening sky on an open-air timber deck that awaits behind French Doors off the dining room.

A timber staircase connects the entrance foyer to the upper floor, where 4 newly 'timber' floored bedrooms await. The air-conditioned master consumes a whole side of this level, with space enough for a king size bed and a cosy sitting area within a bay window alcove overlooking the front garden. Its ensuite is a stunner, oozing seriously moody d/u233?cor vibes with dark full height tiling, a slimline vanity shelf, and stress-busting rain shower within a frameless glass enclosed shower.

The family bathroom has had a recent reno to complement the ensuite, with more floor to ceiling tiles and a big vanity with generous under-basin storage. The laundry below has an adjacent powder room, and the double garage offers secure parking with off-street spots on the driveway.

While there's loads of lawned play space surrounding this home, kids do like to roam and, when they get a little older, they have endless parks nearby to explore - including popular Wally Tate with its skate ramps, cricket club and dog park. Also an easy walk are: Kuraby State School/Kuraby train station (8 minutes), Underwood Plaza (15), and bus stops to get all over Brisbane.

This is forever-home living that can adapt to your family's changing needs. Essential viewing & fast!

All information contained herein is gathered from sources we consider to be reliable. However, we cannot guarantee or give any warranty about the information provided and interested parties must solely rely on their own enquiries.

MORE DETAILS

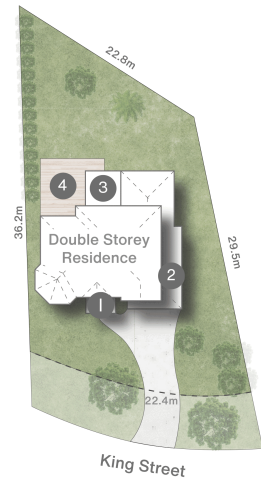
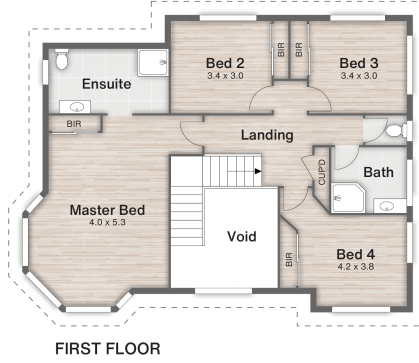
Property ID	B3DYF4R
Property Type	House
Land Area	706 m2
Including	Air Conditioning Deck Dishwasher Outdoor Entertaining Built-in-Robes Remote Garage Solar Panels Water Tank

Faraz Peyman 0424771557
Agent | farazpeyman@ljhpp.com.au
Ling Li 0450 450 703
Sales Agent | lingli@ljhpp.com.au

LJ Hooker Property Partners 07 3344 0288
25 Pinelands Road, SUNNYBANK HILLS QLD 4109
propertypartners.ljhooker.com.au | sunnybankhills@ljhpp.com.au



- 1 Porch
- 2 Garage
- 3 Patio
- 4 Deck



17 King Street **KURABY**

4 | 2 | 2 | 280m² | 706m²

←
NORTH

DISCLAIMER
This is not a legal document; all measurements and dimensions are approximate and are subject to errors, omission or misstatement. No liability will be accepted. Plans are shown for marketing purposes only.