



## Kootingal, 12 Lily Close

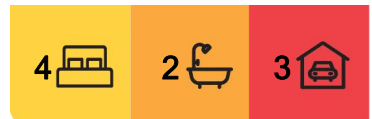
### Escape The Hustle & Bustle

Welcome to 12 Lily Close, Kootingal! A stunning four bedroom, two bathroom family home that offers the perfect blend of comfort and style.

This spacious property boasts a large modern kitchen with stainless steel appliances, a generous open plan living and dining area as well as a separate formal dining and extra living space. The master bedroom features a luxurious ensuite and walk in robe, while the remaining bedrooms are all well-sized and include built-in wardrobes.

Outside, the property sits on a generous 801 sqm block, with a double garage providing ample parking space. The backyard is perfect for entertaining, with a covered alfresco area and plenty of room for the kids to play as well. The property also features side access with a large powered shed.

Located in a quiet cul-de-sac, this property offers a peaceful lifestyle while still being close



**For Sale**  
\$689,000

**View**  
[ljhooker.com.au/95RHTE](http://ljhooker.com.au/95RHTE)

**Contact**  
**Samuel Spokes**  
0475 843 042  
[sam.spokes@ljhooker.com.au](mailto:sam.spokes@ljhooker.com.au)



**LJ Hooker Tamworth**  
**(02) 6767 1710**

**Disclaimer:** All information contained therein is gathered from relevant third parties sources. We cannot guarantee or give any warranty about the information provided. Interested parties must rely solely on their own enquiries.

to local schools, shops, amenities and just a short drive to the Tamworth CBD.

Don't miss your chance to own this beautiful family home, contact us today for more information or to arrange a viewing

## More About this Property

Property ID	95RHTE
Property Type	House
Land Area	801 m <sup>2</sup>
Including	Ensuite Balcony

**Samuel Spokes 0475 843 042**

Licensee, Director - Sales Representative | [sam.spokes@ljhooker.com.au](mailto:sam.spokes@ljhooker.com.au)

**LJ Hooker Tamworth (02) 6767 1710**

199 Peel Street, TAMWORTH NSW 2340

[tamworth.ljhooker.com.au](http://tamworth.ljhooker.com.au) | [tamworth@ljhooker.com.au](mailto:tamworth@ljhooker.com.au)

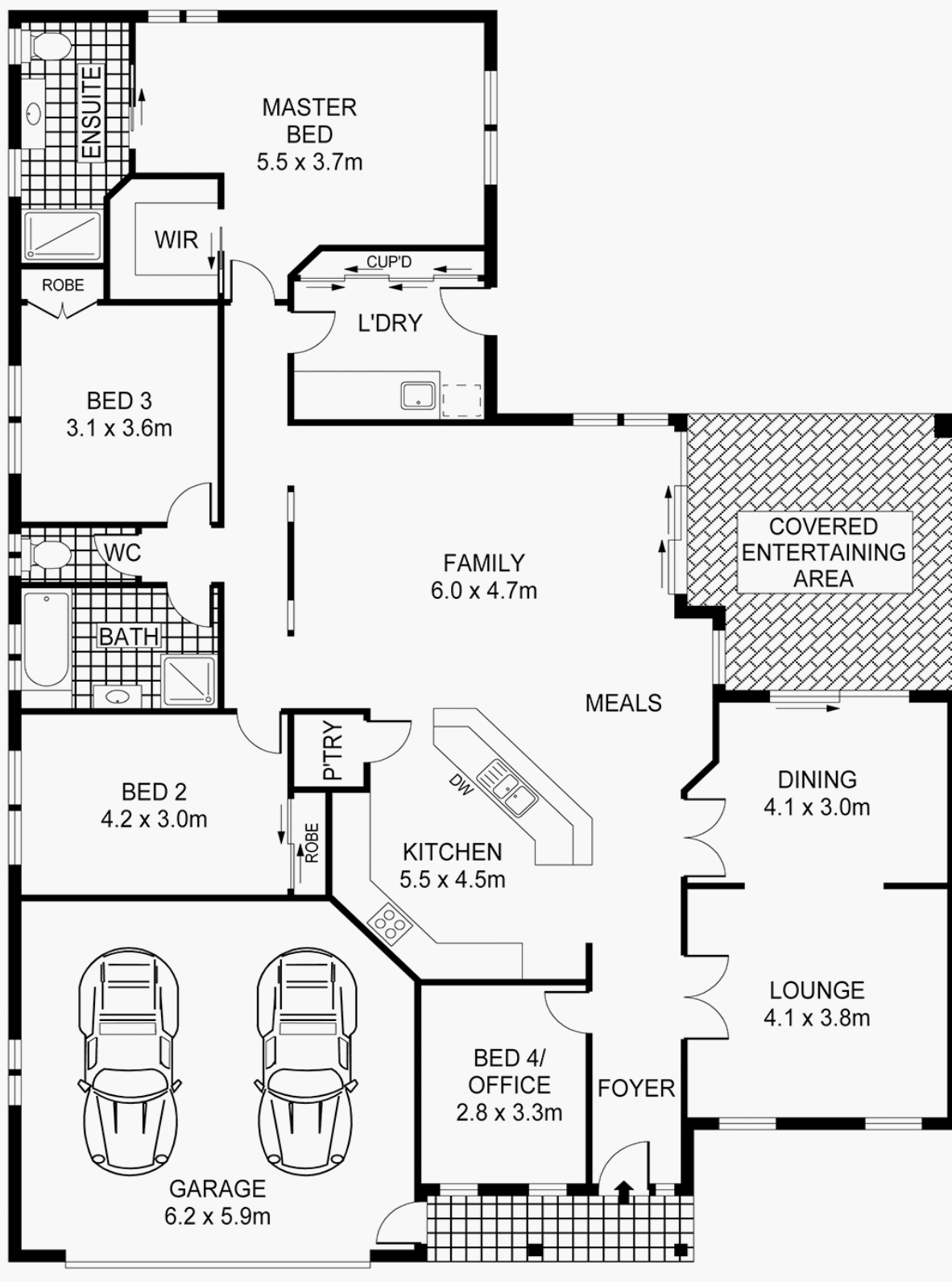


**Disclaimer:** All information contained therein is gathered from relevant third parties sources. We cannot guarantee or give any warranty about the information provided. Interested parties must rely solely on their own enquiries.




**LJ Hooker Tamworth  
(02) 6767 1710**



# 12 Lily Cl, KOOTINGAL



**LJ Hooker**

 x3
  x2
  x2

Plan(s) shown are indicative only of layout. Dimensions are approximate.  
No warranties or guarantees are given. Interested parties should rely on their own inquiries.  
Floor plan by Protography.net.au

**LJ Hooker**

**LJ Hooker Tamworth**  
(02) 6767 1710

**Disclaimer:** All information contained therein is gathered from relevant third parties sources.  
We cannot guarantee or give any warranty about the information provided. Interested parties must rely solely on their own enquiries.