

## Kirwan, 19/51-55 Bamford Lane

UNDER OFFER

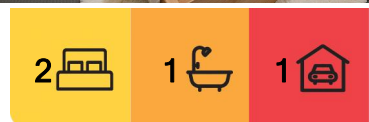
Perfectly located within walking distance to local schools, shopping centres and public transport. This could be your downsizer to move into or as a savvy investment, this unit is located on the second floor to the rear of the complex overlooking the beautiful pool.

### FEATURES INCLUDE:

- Spacious open planned living and dining room, which opens up via sliding doors to your own little patio.
- Kitchen with modern appliances and plenty of cupboards and bench space.
- Main bedroom features built-in-ropes, carpets and two way access into the bathroom.
- Two way bathroom with access from the living area and Main bedroom.
- Additional second queen-sized bedroom, with carpeted floors, ceiling fans.
- Laundry, storage cupboards, fully air-conditioned & ceiling fans, security screens to front and windows.
- Allocated carport, storage, an abundance of resident and visitor car spaces throughout



**Disclaimer:** All information contained therein is gathered from relevant third parties sources. We cannot guarantee or give any warranty about the information provided. Interested parties must rely solely on their own enquiries.



**For Sale**  
Offer over \$265,000

**View**  
[ljhooker.com.au/3U4HWK](http://ljhooker.com.au/3U4HWK)

**Contact**  
**Suzanne Coverlid**  
0439 032 210  
[suzanne.coverlid@ljhooker.com.au](mailto:suzanne.coverlid@ljhooker.com.au)

**LJ Hooker Townsville**  
07 44262125

the complex and at the front of the complex.

- Large resort style swimming pool surrounded by lush gardens, forms the focal point of the complex and an under-covered sitting area complete with chairs and tables available.
- 'Esther Place' comprises 24 individual units, across two buildings.

CURRENTLY RENTED AT \$390.00 PER WEEK UNTIL 8/2/26

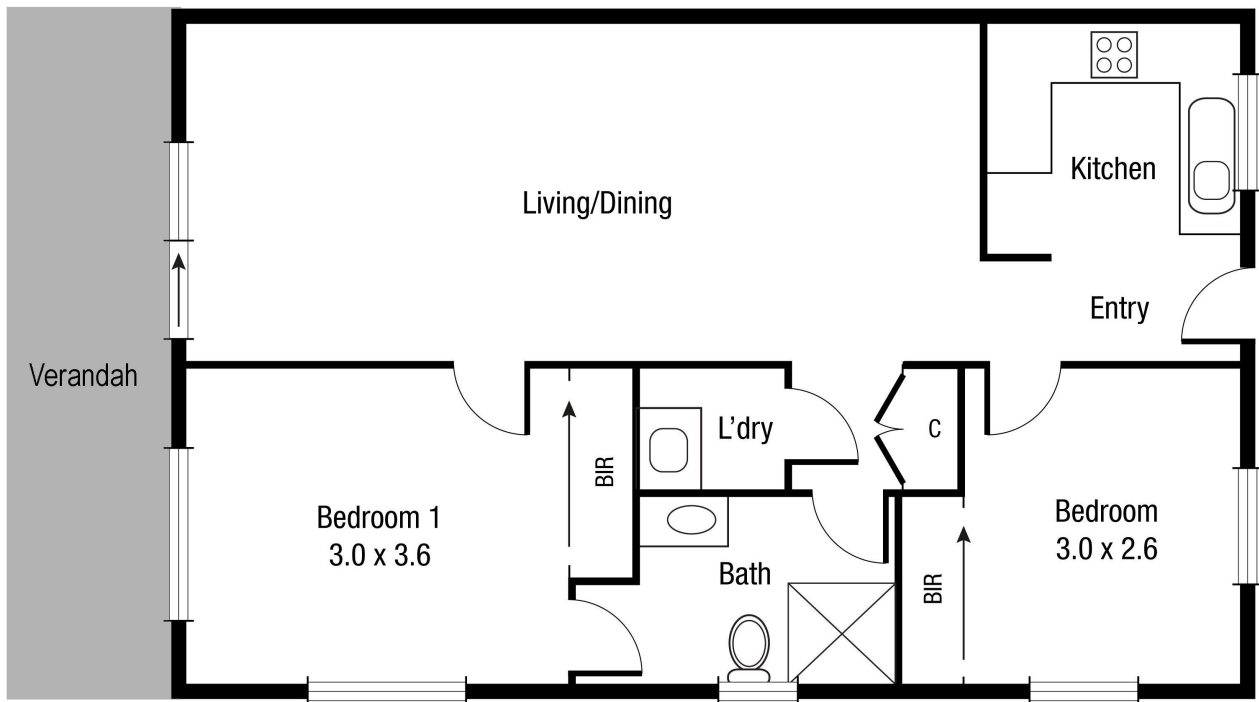
## More About this Property

<b>Property ID</b>	3U4HWK
<b>Property Type</b>	Unit
<b>Land Area</b>	73 m2

**Suzanne Coverlid 0439 032 210**  
Sales Consultant | [suzanne.coverlid@ljhooker.com.au](mailto:suzanne.coverlid@ljhooker.com.au)

**LJ Hooker Townsville 07 44262125**  
Shop 18/39 Eyre Street, NORTH WARD QLD 4810  
[townsville.ljhooker.com.au](http://townsville.ljhooker.com.au) | [townsville@ljhooker.com.au](mailto:townsville@ljhooker.com.au)





Scale in metres. Indicative only. Dimensions are approximate. All information contained herein is gathered from sources we believe to be reliable. However we cannot guarantee its accuracy and interested persons should rely on their own enquiries.

**TOTAL AREA : 60.7 sq.m**