

## Kingston, 133 Willowbend Road

### Charming Family Home with Sun-Soaked Entertaining

Welcome to 133 Willowbend Road, Kingston—a warm and inviting family home nestled on a spacious 1,064m<sup>2</sup> block with beautiful mountain views and room for everyone to enjoy.

Step inside and feel instantly at home with gorgeous Tasmanian oak floorboards leading you through the thoughtfully designed spaces. The sunken living room, part of the open-plan living, dining, and kitchen area, creates a cozy and welcoming atmosphere—perfect for relaxed family time or entertaining friends. The kitchen is a dream, featuring modern stainless steel appliances and stunning timber benchtops, ready for home-cooked meals and special moments.

At the heart of this home is the huge entertaining deck, bathed in sunshine from morning to evening. Whether you're hosting loved ones, enjoying a quiet coffee, or making memories around the wood-fired pizza oven, this space is simply magical.



**Disclaimer:** All information contained therein is gathered from relevant third parties sources. We cannot guarantee or give any warranty about the information provided. Interested parties must rely solely on their own enquiries.

3

2

5

**For Sale**  
Please Call

**View**  
[ljhooker.com.au/5XDMFCS](http://ljhooker.com.au/5XDMFCS)

**Contact**  
**Simon Parsons**  
0438 296 830  
[sparsons@ljhookerpinnacle.com](mailto:sparsons@ljhookerpinnacle.com)

**Taya Parsons**  
0424 143 648  
[tparsons@ljhookerpinnacle.com](mailto:tparsons@ljhookerpinnacle.com)

**LJ Hooker Pinnacle Property Rentals**  
**(03) 6272 8177**



The layout is designed for effortless family living, offering two separate living areas. The second living space, positioned near two of the bedrooms, is wonderfully versatile—whether as a kids' retreat, study nook, home office, or cozy reading corner. The master bedroom is your private haven, complete with a walk-in wardrobe and ensuite, while the other two bedrooms feature built-in wardrobes for added convenience.

Beyond the home, you'll love the fantastic-sized, private yard—a safe and secure space where kids can run, play, and enjoy the lush grassy area. Whether it's backyard cricket, weekend picnics, or simply soaking up the fresh air, this outdoor space is perfect for family fun.

For those who need storage and space for hobbies, the property includes a 32m<sup>2</sup> single garage with drive-through access to a 5m x 6m rear garage, plus a 3m x 3m garden shed—perfect for all your tools, toys, and treasures.

And the location? Absolutely perfect! You're just five minutes from Kingston's CBD, the Kingborough Sports Centre, Kingston High School, and stunning local beaches, with Hobart CBD only a 20-minute drive away.

This home is ready for its next family to fill it with love and laughter. Contact Simon or Taya today to arrange your inspection - We can't wait to show you around!

## More About this Property

<b>Property ID</b>	5XDMFCS
<b>Property Type</b>	House
<b>House Size</b>	154 m2
<b>Land Area</b>	1066 m2
<b>Including</b>	Secure Parking

### Simon Parsons 0438 296 830

Pinnacle Partner | Property Representative | [sparsons@ljhookerpinnacle.com](mailto:sparsons@ljhookerpinnacle.com)

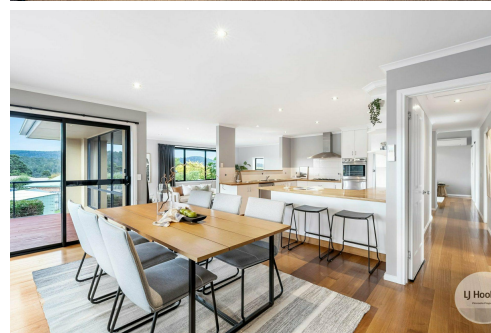
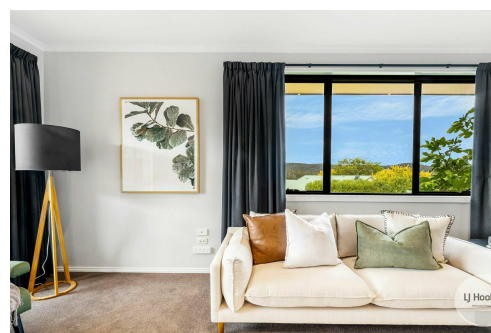
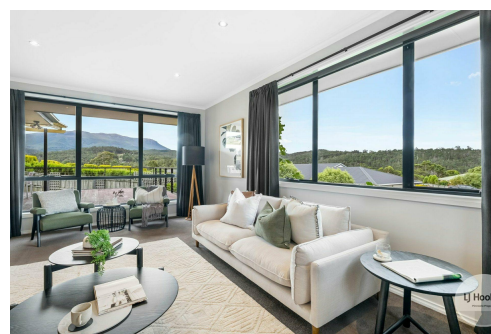
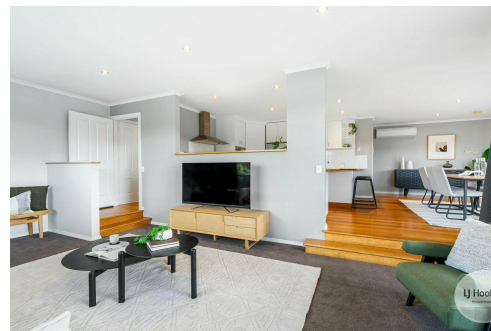
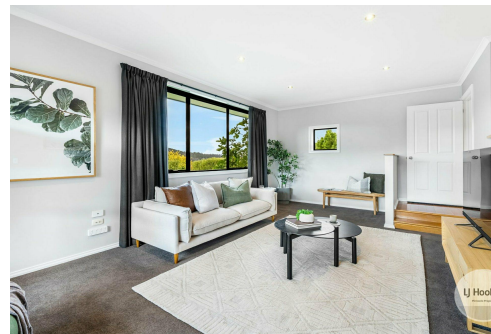
### Taya Parsons 0424 143 648

Executive Assistant to Simon Parsons | [tparsons@ljhookerpinnacle.com](mailto:tparsons@ljhookerpinnacle.com)

### LJ Hooker Pinnacle Property Rentals (03) 6272 8177

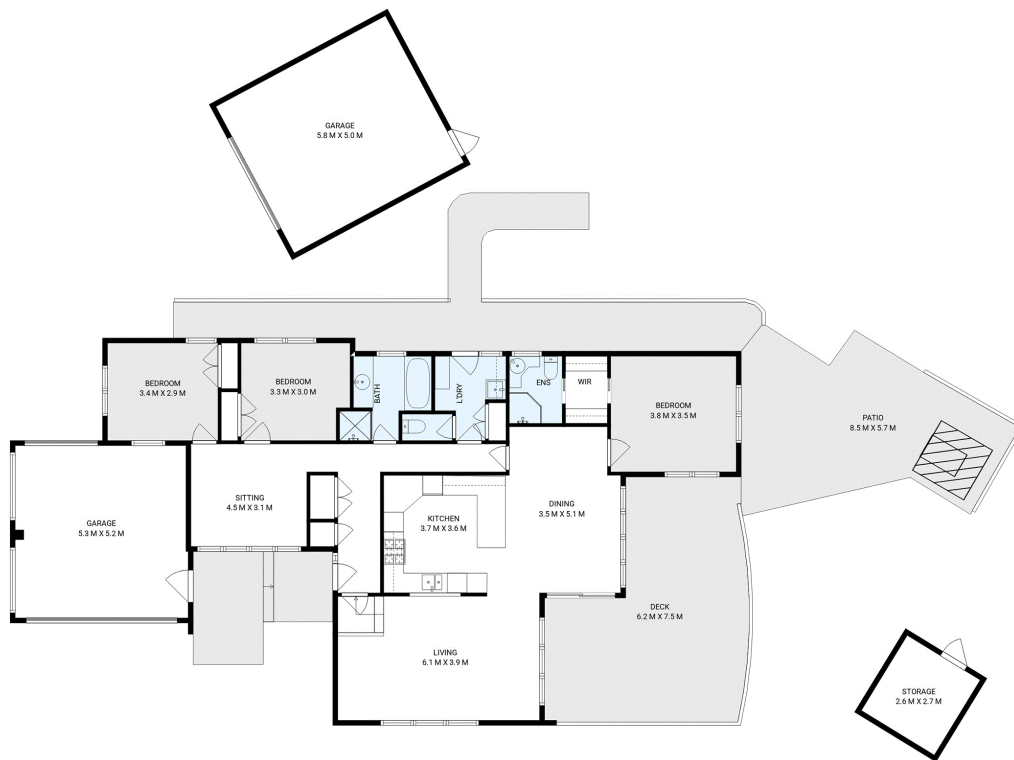
122 Murray Street, HOBART TAS 7000

[pinnacleproperty.ljhooker.com.au](http://pinnacleproperty.ljhooker.com.au) | [hello@ljhookerpinnacle.com](mailto:hello@ljhookerpinnacle.com)



**Disclaimer:** All information contained therein is gathered from relevant third parties sources. We cannot guarantee or give any warranty about the information provided. Interested parties must rely solely on their own enquiries.

**LJ Hooker Pinnacle Property Rentals**  
**(03) 6272 8177**



## 133 Willowbend Road, Kingston

House area: 147 sqm

Areas and dimensions are approximate and therefore this floor plan should only be used for illustrative purposes.

Real Estate Marketing by [nextcreative.com.au](http://nextcreative.com.au)



**LJ Hooker Pinnacle Property Rentals**  
(03) 6272 8177

**Disclaimer:** All information contained therein is gathered from relevant third parties sources. We cannot guarantee or give any warranty about the information provided. Interested parties must rely solely on their own enquiries.