

Kingston, 7/1 Jardine Street

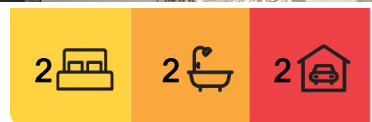
Parkland views in Kingston's Blue Dome Complex

Auction Location: On site

Discover urban sophistication in this generous contemporary apartment, nestled within the prestigious Blue Dome complex in the heart of Kingston. This split-level apartment offers a unique blend of space, style, and location that's hard to beat.

The light filled, open-plan living area features soaring ceilings that create a sense of spaciousness and grandeur. The freshly painted interior provides a clean, modern canvas for your personal style. The cleverly designed space seamlessly integrates a contemporary kitchen with timber benchtops and modern appliances, perfect for culinary enthusiasts and entertainers alike.

The open plan layout maximizes every inch, with two generous bedrooms thoughtfully positioned upstairs for privacy. The sun-drenched master retreat boasts an ensuite and



For Sale

Auction Saturday 14th September On site at 11:30am

View

ljhooker.com.au/1TK6FMF

Contact

Stephen Thompson

0418 626 254

stephen.thompson@ljhmanuka.com.au



Disclaimer: All information contained therein is gathered from relevant third parties sources. We cannot guarantee or give any warranty about the information provided. Interested parties must rely solely on their own enquiries.

EER ★★★★★

LJ Hooker Manuka
(02) 6239 5551

ample storage, while the second bedroom features built-in robes.

Embrace indoor-outdoor living with large west-facing and east-facing balconies, offering versatile spaces for relaxation and alfresco dining. These outdoor havens provide the perfect vantage point to soak in the leafy surrounds and vibrant Kingston atmosphere.

Just outside the front door, a stand-alone double lock-up garage with attached secure storage room provides ample and rare space for apartment living.

Positioned overlooking picturesque Telopea Park, this Blue Dome gem puts you at the centre of it all. Enjoy easy walks to the bustling Kingston Foreshore, charming Old Bus Depot Markets, and an array of boutique shops and cafes in nearby Manuka Village and old Kingston shops.

This low-maintenance loft-style apartment offers an unparalleled lifestyle in a quiet complex featuring on-site visitor parking and newly landscaped gardens, enhancing the appeal of this already exceptional property.

Features:

- *Split Level apartment in the prestigious Blue Dome complex
- *Soaring ceilings and open-plan living area
- *Freshly painted throughout
- *Modern kitchen with timber benchtops
- *Large west-facing and east-facing balconies
- *Master bedroom with ensuite and ample storage
- *Stand-alone double lock-up garage with storage room
- *Prime location overlooking Telopea Park
- *Walking distance to Kingston Foreshore, Manuka Village, and old Kingston shops
- *On-site visitor parking
- *Newly landscaped garden
- *Exclusive and quiet complex

Whether you're downsizing, starting out, or looking for an investment property this low-maintenance home provides the perfect opportunity to experience boutique living in one of Canberra's most desirable neighbourhoods. Don't miss this rare opportunity to secure a piece of Kingston's most coveted address!

Disclaimer: All information contained herein is gathered from external sources we consider to be reliable. However, we cannot guarantee or give any warranty about the information provided. Interested parties must solely rely on their own inquiries and satisfy themselves in all respects.

Disclaimer:

While all care has been taken in compiling information regarding properties marketed for rent or sale, we accept no responsibility and disclaim all liabilities regarding any errors or inaccuracies contained herein. All parties should rely on their own investigation to validate the information provided.



LJ Hooker Manuka
(02) 6239 5551

Disclaimer: All information contained therein is gathered from relevant third parties sources. We cannot guarantee or give any warranty about the information provided. Interested parties must rely solely on their own enquiries.

More About this Property

Property ID	1TK6FMF
Property Type	Apartment
House Size	102.4 m²
EER	0.5
Including	Balcony Built-in-Robes Liveability

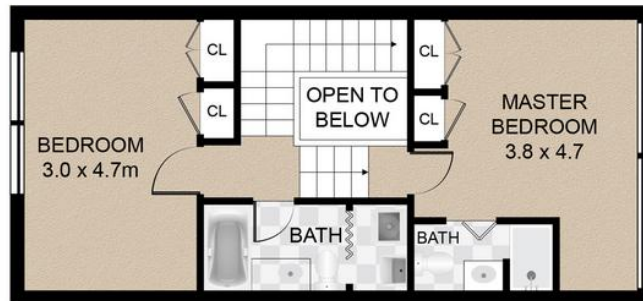
Stephen Thompson 0418 626 254
Proprietor and Property Consultant | stephen.thompson@ljhmanuka.com.au

LJ Hooker Manuka (02) 6239 5551
20 Bougainville Street, MANUKA ACT 2603
manuka.ljhooker.com.au | manuka@ljhmanuka.com.au



LJ Hooker Manuka
(02) 6239 5551

Disclaimer: All information contained therein is gathered from relevant third parties sources.
We cannot guarantee or give any warranty about the information provided. Interested parties must rely solely on their own enquiries.



FLOOR 2



FLOOR 1

7/1 Jardine Street, Kingston



Disclaimer: Plans are indicative only and should be checked by the prospective purchaser.
Plans shown are for presentation purposes and are not part of any legal document. All measurements and figures are approximate.
The information herein is gathered from sources we believe to be reliable.

aperture
by LJ Hooker