



43 Gulligal Street, Kingsthorpe

3  1  2 

## Rare Kingsthorpe Family Home with Endless Potential

Make no mistake, this property presents a fantastic opportunity to secure a family home in an enviable Kingsthorpe location. The potential here is undeniable, offering you the chance to add your own touches and transform the home into exactly what you envision.

This generous single-level residence is a true blank canvas. While it may benefit from some work and creative vision, the location is exceptional. Kingsthorpe is well known for its peaceful, family-friendly atmosphere, spacious blocks and strong sense of community, all while being conveniently close to Toowoomba's amenities. With the home's solid bones providing a great foundation, all it is waiting for is your creativity to bring it back to life.

Opportunities like this in Kingsthorpe are rare in today's market, so don't miss your chance.

**FOR SALE**  
Contact Agent

### AGENTS

Naomi Atkinson  
0488 091 743  
natkinson@ljht.com.au

### AGENCY

LJ Hooker Toowoomba  
(07) 4688 2222

All information contained therein is gathered from relevant third parties sources.  
We cannot guarantee or give any warranty about the information provided.  
Interested parties must rely solely on their own enquiries.

 **LJ Hooker**

## MORE DETAILS

Property ID 1ZHEF4W  
Property Type House  
Land Area 2001 m2

**Naomi Atkinson 0488 091 743**

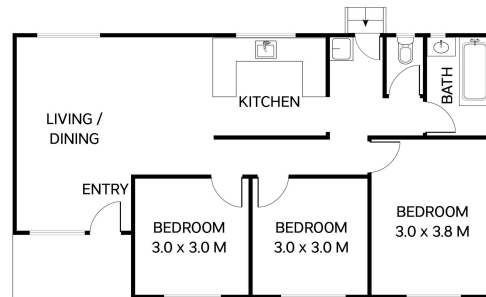
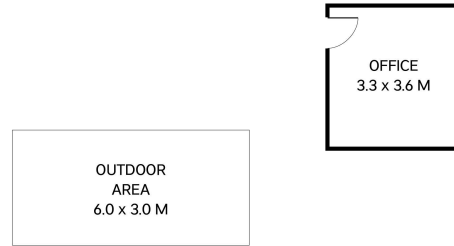
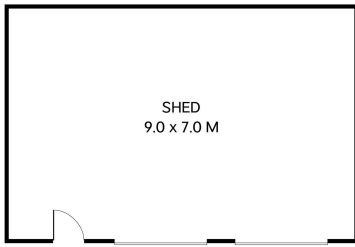
Residential Sales Executive | [natkinson@ljht.com.au](mailto:natkinson@ljht.com.au)

**LJ Hooker Toowoomba (07) 4688 2222**

Level 1, 677-683 Ruthven Street, TOOWOOMBA QLD 4350  
[toowoomba.ljhooker.com.au](http://toowoomba.ljhooker.com.au) | [toowoomba@ljht.com.au](mailto:toowoomba@ljht.com.au)



All information contained therein is gathered from relevant third parties sources.  
We cannot guarantee or give any warranty about the information provided.  
Interested parties must rely solely on their own enquiries.



Total: 80m<sup>2</sup>

43 Gulligal Street  
Kingsthorpe



This plan is for representational purposes only. All dimensions are approximate and shouldn't be solely relied upon. Floorplan created by Vue Digital