




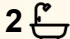

15 Warrina Court, Kingsthorpe

## Entertainer's Dream with Multiple Living Areas, Landscaped Gardens & Hidden Retreats

This home is without doubt an entertainer's dream, offering a versatile selection of indoor and outdoor spaces designed for hosting, relaxing, and enjoying year-round living. Set amongst beautifully landscaped gardens, the home delivers a unique sense of privacy, charm, and discovery at every turn.

Boasting four generous bedrooms and two well-appointed bathrooms, the layout is perfectly suited for growing families or those who love to welcome guests. The spacious kitchen and dining area forms the true heart of the home, featuring ample bench space and storage, and seamlessly connecting to the surrounding living and entertaining zones to create a warm and inviting atmosphere.

Inside, an enclosed entertaining area provides the ideal setting for gatherings in any season, offering comfort and flexibility whether you're hosting intimate dinners or larger celebrations. A separate retreat adds further versatility, perfect as a second living space, media

4  2  2 

**FOR SALE**  
Offers over \$890,000

**VIEW**  
By Appointment

**AGENTS**  
Naomi Atkinson  
0488 091 743  
natkinson@ljht.com.au

**AGENCY**  
LJ Hooker Toowoomba  
(07) 4688 2222

All information contained therein is gathered from relevant third parties sources.  
We cannot guarantee or give any warranty about the information provided.  
Interested parties must rely solely on their own enquiries.

 **LJ Hooker**

room, or quiet escape from the main hub of the home.

Step outside and you'll find yourself immersed in stunning landscaped gardens, where winding pathways lead you through a series of hidden sanctuaries. Discover private nooks, peaceful sitting areas, and charming garden features that create a sense of tranquillity and make this property truly one of a kind. Every corner has been thoughtfully designed to maximise both beauty and usability.

Complete with two car spaces and an abundance of indoor and outdoor living options, this home offers the perfect balance of practicality and lifestyle. Whether you're entertaining guests, spending quality time with family, or simply enjoying the serenity of your surroundings, this property delivers space, comfort, and character in equal measure.

## MORE DETAILS

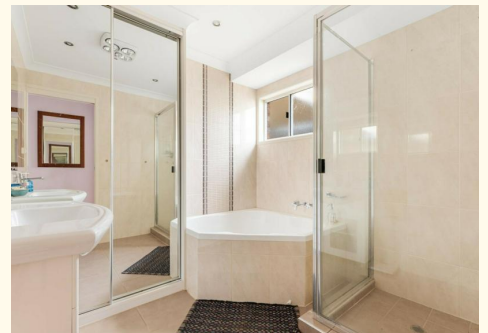
Property ID	200PF4W
Property Type	House
Land Area	2022 m2

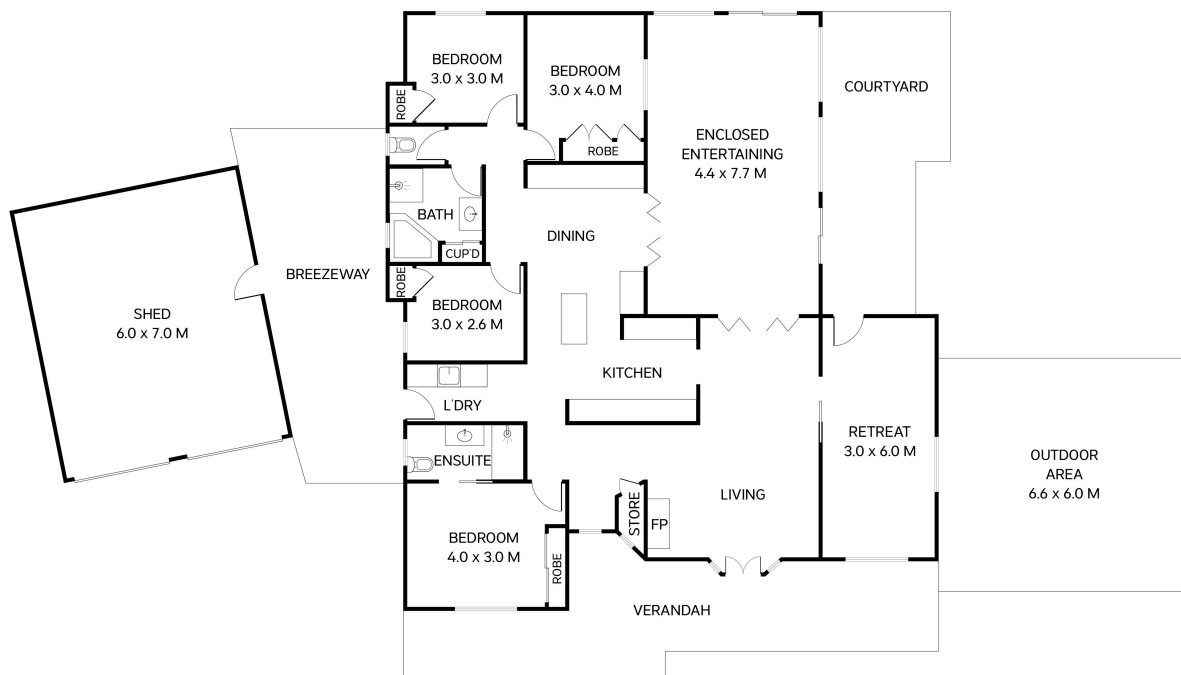
**Naomi Atkinson 0488 091 743**

Residential Sales Executive | [natkinson@ljht.com.au](mailto:natkinson@ljht.com.au)

**LJ Hooker Toowoomba (07) 4688 2222**

Level 1, 677-683 Ruthven Street, TOOWOOMBA QLD 4350  
[toowoomba.ljhooker.com.au](http://toowoomba.ljhooker.com.au) | [toowoomba@ljht.com.au](mailto:toowoomba@ljht.com.au)





Total: 356m<sup>2</sup>

## 15 Warrina Court Kingsthorpe



This plan is for representational purposes only. All dimensions are approximate and shouldn't be solely relied upon. Floorplan created by Vue Digital