






Kingsley, 7 Tandina Way

Luxurious Dual Living Kingsley Property!

6  3  2 

All offers due Wednesday 26th of March. The seller reserves the right to sell prior to this date.

For Sale
Under Offer

View
ljhooker.com.au/JMJHRD

Welcome to 7 Tandina Way, Kingsley —where elegance, functionality, and quality converge in this remarkable dual living property! Nestled in a tranquil neighborhood, this exceptional estate boasts not one, but two distinctive residences on a single parcel of land, offering endless possibilities for extended families, rental income, or versatile home office arrangements.

Contact
Ian Knight
0413 447 016
ian.knight@ljhooker.com.au

Main House:

- Expansive, fully renovated 4-bed, 2-bath home
- Luxurious chef's kitchen with high-end appliances
- Elegant formal lounge and separate sitting room/office



LJ Hooker Joondalup
(08) 9300 2100

Disclaimer: All information contained therein is gathered from relevant third parties sources. We cannot guarantee or give any warranty about the information provided. Interested parties must rely solely on their own enquiries.

- Inviting theatre/games room for entertainment
- Large alfresco area perfect for outdoor gatherings
- Ducted air conditioning ensures year-round comfort
- Immaculately presented with meticulous attention to detail
- Solar hot water system for eco-friendly efficiency
- Cost-saving solar panels to minimize utility expenses
- Whole-home water filtration system for pristine water quality

Granny Flat:

- Private, self-contained 2-bed, 1-bath dwelling
- Masterwall construction ensures durability and insulation
- Constructed by Summit Homes just 5 years ago
- Quality finishes and furnishings throughout
- Features a dedicated private entrance for added convenience

This property epitomizes modern living at its finest —the main house exudes charm and sophistication, while the second residence offers contemporary comfort with eco-friendly amenities. Whether you seek accommodation for guests, supplemental rental income, or desire the luxury of additional living space, this dual living setup caters to your every need.

Ideally situated in the sought-after Kingsley area, residents enjoy easy access to reputable schools, scenic parks, bustling shopping centers, and efficient transport links, ensuring a convenient and fulfilling lifestyle.

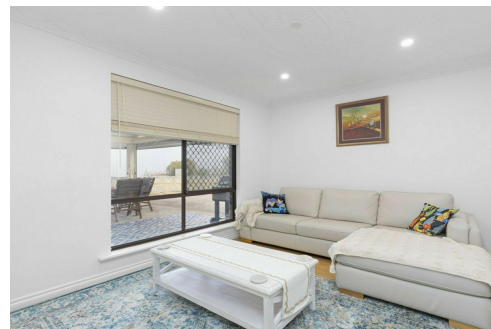
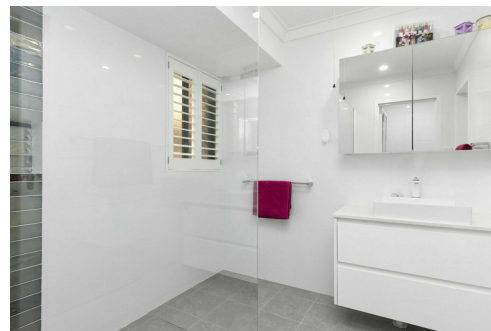
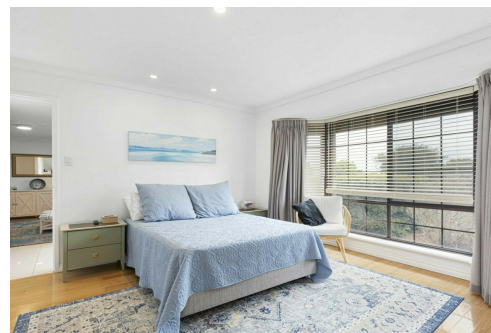
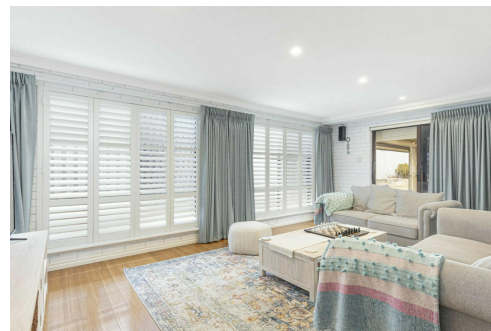
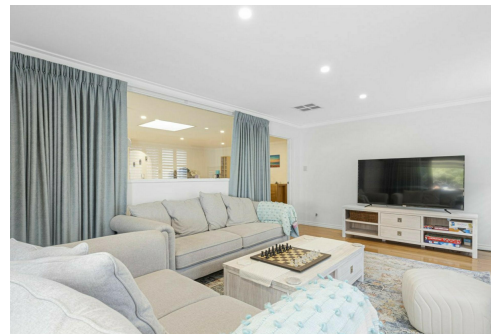
Do not miss out on this rare opportunity to own a truly exceptional property that seamlessly blends luxury living with sustainable features. Contact us today to arrange a private viewing and discover the unparalleled appeal of 7 Tandina Way, Kingsley. Secure your viewing now and embrace the epitome of contemporary living!

More About this Property

Property ID	JMJHRD
Property Type	House
Land Area	680 m2
Including	Air Conditioning Toilets (3) Dishwasher Outdoor Entertaining Built-in-Robes Fully Fenced Liveability

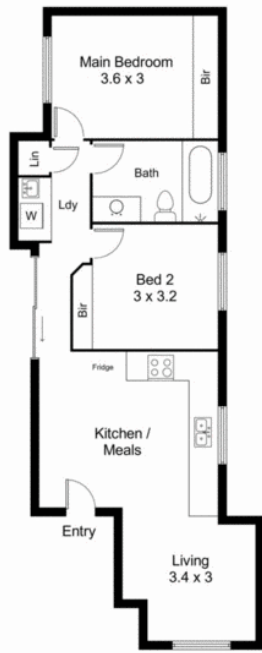
Ian Knight 0413 447 016
Residential Sales Specialist | ian.knight@ljhooker.com.au

LJ Hooker Joondalup (08) 9300 2100
4/25 Delage Street, JOONDALUP WA 6027
joondalup.ljhooker.com.au | admin.joondalup@ljhooker.com.au

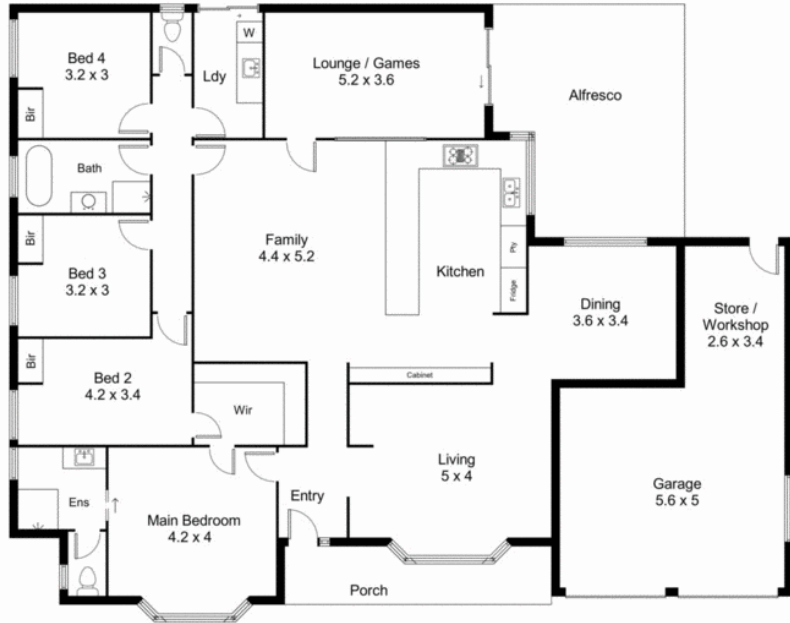


LJ Hooker Joondalup
(08) 9300 2100

Disclaimer: All information contained therein is gathered from relevant third parties sources. We cannot guarantee or give any warranty about the information provided. Interested parties must rely solely on their own enquiries.



Granny Flat



Main Dwelling



7 Tandina Way Kingsley

/ for information and guidance purpose only /
measurements shown are approximate



LJ Hooker Joondalup
(08) 9300 2100

Disclaimer: All information contained therein is gathered from relevant third parties sources. We cannot guarantee or give any warranty about the information provided. Interested parties must rely solely on their own enquiries.