

Kingsford, 27 Sturt Street

Two Street Frontage in Tranquil Location



This charming home, bathed in natural warmth and illuminated by northern sunlight, effortlessly combines period appeal with convenient city access via the nearby light rail station. Boasting a delightful entertaining area, a well-equipped gas kitchen, and three spacious bedrooms, it exudes an inviting ambiance. With its high ceilings and inviting interiors, the house offers multiple outdoor settings, including a charming deck and garden oasis. Positioned on a corner block with only one neighboring side, it enjoys proximity to bustling Kingsford shops, reputable schools, UNSW, and the hospital precinct.

Key Features:

- Open living space and a designated dining area, ideal for hosting dinner gatherings
- North-facing patio and a fully enclosed garden sanctuary complete with a deck
- Neat gas kitchen featuring glass splashbacks and under-cabinet lighting

For Sale
SOLD at Auction

View
ljhooker.com.au/1VHHYY

Contact
Aaron Del Monte
0447 144 434
aaron.delmonte@ljhdoublebay.com

James Makris
0423 714 622
james.makris@ljhdoublebay.com

LJ Hooker

Disclaimer: All information contained therein is gathered from relevant third parties sources. We cannot guarantee or give any warranty about the information provided. Interested parties must rely solely on their own enquiries.

LJ Hooker Double Bay
(02) 9185 2816

More About this Property

Property ID	1VHHYY
Property Type	House

Aaron Del Monte 0447 144 434

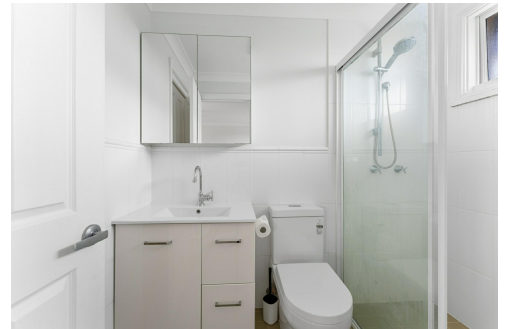
Managing Director | aaron.delmonte@ljhdoublebay.com

James Makris 0423 714 622

Property Partner | james.makris@ljhdoublebay.com

LJ Hooker Double Bay (02) 9185 2816

6/710 New South Head Road, ROSE BAY NSW 2029
doublebay.ljhooker.com.au | admin@ljhdoublebay.com

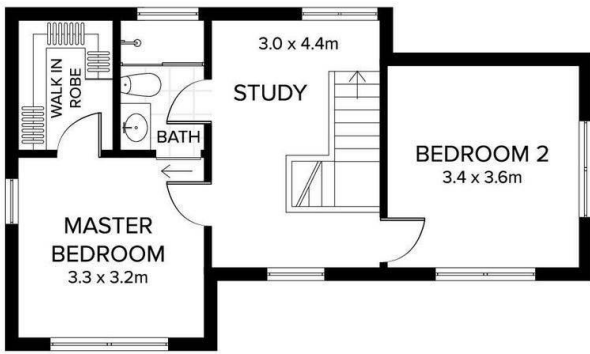


LJ Hooker

Disclaimer: All information contained therein is gathered from relevant third parties sources. We cannot guarantee or give any warranty about the information provided. Interested parties must rely solely on their own enquiries.

**LJ Hooker Double Bay
(02) 9185 2816**

27 STURT STREET KINGSFORD

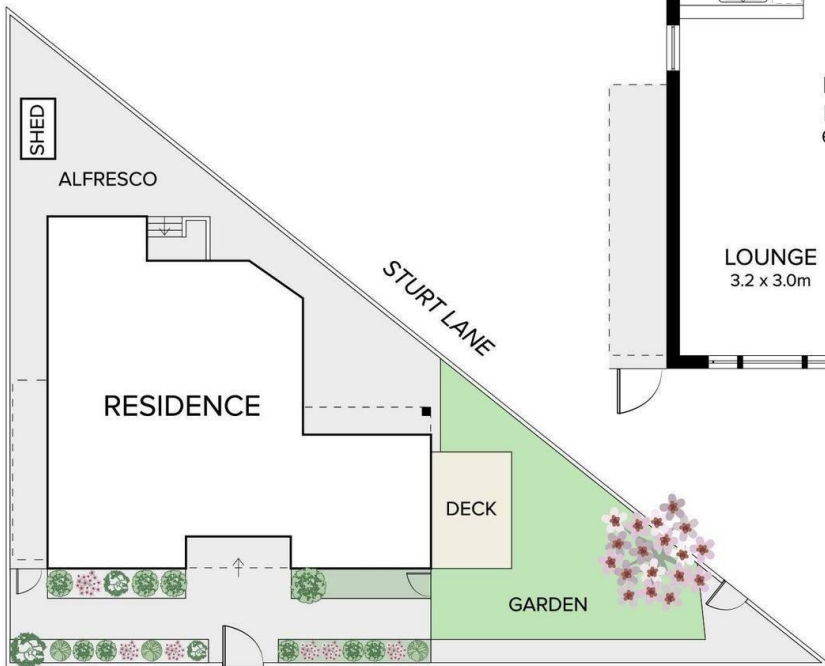


FIRST FLOOR



SHED
0.8 x 1.5m

GROUND FLOOR



STURT STREET
SITE PLAN



DISCLAIMER: PLANS SHOWN ARE FOR PRESENTATION PURPOSES AND ARE NOT PART OF ANY LEGAL DOCUMENT. ALL MEASUREMENTS AND FIGURES ARE APPROXIMATE.