

Kingscliff, 2a Kingscliff Street

SOLD BY LJH WITHERIFF - Proudly Sold by Nick Witheriff

Kingscliff's Ocean House - Where Lifestyle Meets Luxury!!

This brand-new beach house is perfectly positioned, opposite beautiful Kingscliff Beach, and located and within walking distance to cafe's, restaurants, shops and amenities.

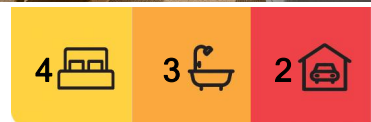
Boasting a northeast aspect, this stunning 4-bedroom home, offers uninterrupted, never to built out ocean views, beautiful sunsets over the mountains, pool, and lift access to all levels.

Drenched in natural sunlight and capturing cooling ocean breezes, this luxury Kingscliff beach house, ticks all the boxes and is sure to impress.

Key features:



Disclaimer: All information contained therein is gathered from relevant third parties sources. We cannot guarantee or give any warranty about the information provided. Interested parties must rely solely on their own enquiries.



For Sale
\$4,925,000

View
ljhooker.com.au/1C38F69

Contact
Nick Witheriff
0405 618 477
nickwitheriff@ljhkingscliff.com.au

LJ Hooker Kingscliff
(02) 6674 1000

- Northeast facing home over 3 levels.
- Lift access to each level
- Perfect, never to be built out, ocean views from all 3 levels
- Beautiful views to mountains from middle and top levels
- 4 bedrooms
- 3 living areas
- The ground floor boasts its own kitchenette and is ideal for older children or grandparents etc.
- Round swimming pool
- Rear courtyard and garden
- Quality build, made from solid masonry walls on the ground floor and middle section
- Ground floor is slab on ground and first floor is a suspended slab creating a very solid base
- High quality finishes and Bosch appliances
- Commercial 3 phase lift (Schindler Lifts -one the largest lift manufactures on the planet.) It is very fast and quiet and is designed to be used every day.
- Lot size 365m2
- WIFI Network built in, so every level has perfect reception.
- Full security system including front door camera and digital/remote access.

CONTACT NICK WITHERIFF ON 0405 618 477 FOR MORE INFORMATION

5 MINUTES TO TWEED VALLEY HOSPITAL (MAY COMPLETION 2024)

15 MINUTES TO GOLD COAST INTERNATIONAL AIRPORT

30 MINUTES TO BYRON BAY

More About this Property

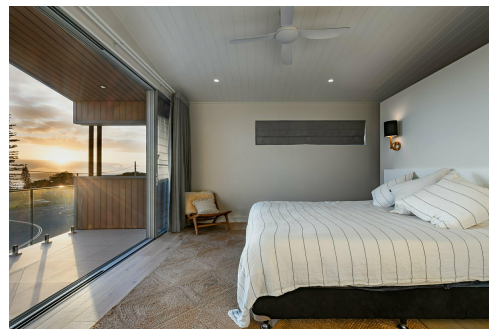
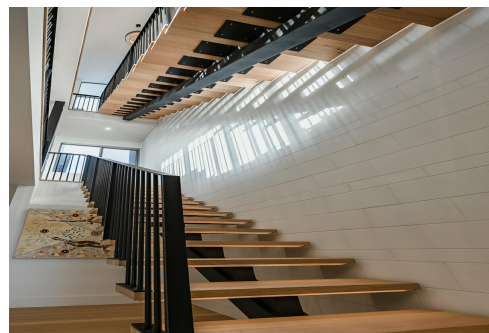
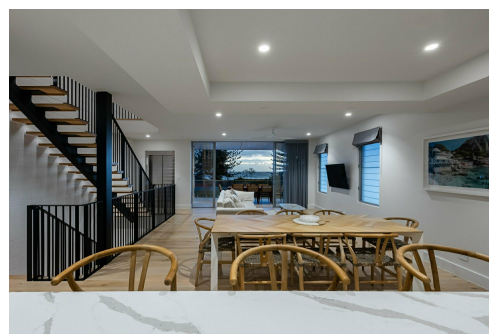
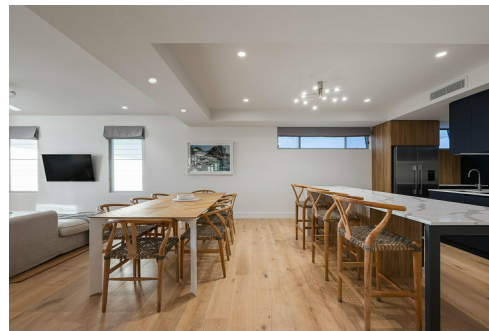
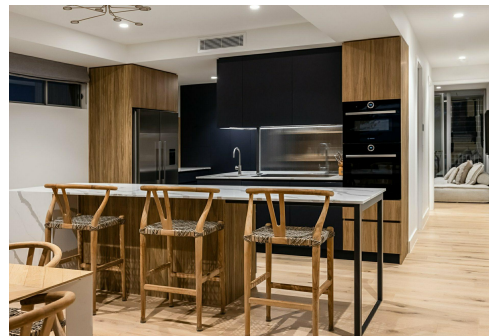
Property ID	1C38F69
Property Type	DuplexSemi-detached
Land Area	365 m ²

Nick Witheriff 0405 618 477

Director - Head of Witheriff Group | nickwitheriff@ljkingscliff.com.au

LJ Hooker Kingscliff (02) 6674 1000

Shop 4, 106 Marine Parade, KINGSLIFF NSW 2487
kingscliff.ljhooker.com.au | office@ljkingscliff.com.au



LJ Hooker Kingscliff
(02) 6674 1000

Disclaimer: All information contained therein is gathered from relevant third parties sources. We cannot guarantee or give any warranty about the information provided. Interested parties must rely solely on their own enquiries.