

Kingscliff, 17a Sutherland Street

TOTAL PROJECT SOLD \$4.6M – Sold by Nick Witheriff and Brian & Denise Dangerfield

NORTH SIDE TRI LEVEL HOUSE ON KINGSCLIFF HILL WITH OCEAN VIEWS

Perfectly positioned on Kingscliff's famous hill, apart from offering indulgent views of the ocean from the Master suite, located on its very own level, the home is based just a stroll away from cafe's, dining, beaches and Cudgen Creek.

BRAND NEW CONSTRUCTION – BE THE FIRST TO EXPERIENCE

Offering 4 bedrooms over three levels, a perfectly positioned rumpus that leads onto entertaining around the sparkling pool, luxe coastal finishes in the gourmet kitchen, living and dining zones perched to capture ocean breezes, this home will



Disclaimer: All information contained therein is gathered from relevant third parties sources. We cannot guarantee or give any warranty about the information provided. Interested parties must rely solely on their own enquiries.

SOLD

4

3

1

For Sale

Please Call

View

ljhooker.com.au/1BM6F69

Contact

Brian Dangerfield

0418 962 548

dangerfields@ljhkingscliff.com.au

Nick Witheriff

0405 618 477

nickwitheriff@ljhkingscliff.com.au

LJ Hooker Kingscliff
(02) 6674 1000

not disappoint.

Newly completed, this tri level beach house will offer a luxury coastal finish, designed to maximise the climate, position and indulgent beach lifestyle that Kingscliff is renowned for. Located on the ever popular Kingscliff Hill - do not delay.

ONE SOLD - NORTH SIDE REMAINS

FEATURES

- Three levels with roof deck offering expansive views.
- 4 bed
- 3.5 bath
- 2 living areas including rumpus that services pool Master on the third floor with balcony and views Study
- Single lock up garage plus room for 2 cars secured onsite.
- Pool
- Brand Newly constructed
- Quality coastal modern finishes
- Ocean views
- Fantastic location close to all amenity
- Walk to Cudgen Creek, dining, cafes, retail, school, healthcare and more

5 MINUTES TO TWEED VALLEY HOSPITAL (completion due 2023)

15 MINUTES TO GOLD COAST AIRPORT

30 MINUTES TO BYRON BAY

CLOSE TO SHOPS, CAFES, RESTAURANTS, WOOLWORTHS SUPERMARKET, MEDICAL CENTRE, SCHOOLS, CHILD CARE AND SALT VILLAGE.

Disclaimer:

All information (including but not limited to the property area, floor size, price, photos, address and general property description) is provided as a convenience to you and has been provided to LJ Hooker by third parties. LJ Hooker is unable to definitively confirm whether the information listed is correct or 100% accurate. LJ Hooker does not accept any liability (direct or indirect) for any injury, loss, claim, damage or any incidental or consequential damages, including, but not limited to, lost profits or savings, arising out of or in any way connected with the use of any information, or any error, omission, or defect in the information, contained on the Website. Information contained on the Website should not be relied upon and you should make your own enquiries and seek legal advice in respect of any property on the Website. Prices displayed on the Website are current at the time of issue but may change.



LJ Hooker Kingscliff
(02) 6674 1000

Disclaimer: All information contained therein is gathered from relevant third parties sources. We cannot guarantee or give any warranty about the information provided. Interested parties must rely solely on their own enquiries.

More About this Property

Property ID	1BM6F69
Property Type	DuplexSemi-detached

Brian Dangerfield

Associate Director (Sales) | dangerfields@ljhkingscliff.com.au

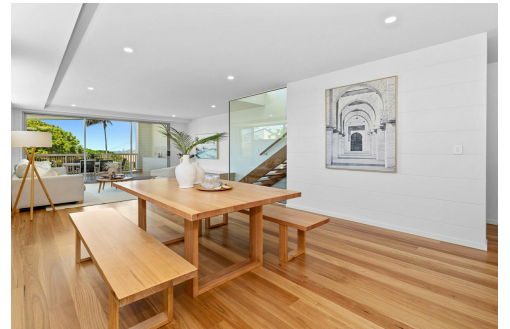
Nick Witheriff

Director - Head of Witheriff Group | nickwitheriff@ljhkingscliff.com.au

LJ Hooker Kingscliff (02) 6674 1000

Shop 4, 106 Marine Parade, KINGSCLIFF NSW 2487

kingscliff.ljhooker.com.au | office@ljhkingscliff.com.au



LJ Hooker Kingscliff
(02) 6674 1000

Disclaimer: All information contained therein is gathered from relevant third parties sources. We cannot guarantee or give any warranty about the information provided. Interested parties must rely solely on their own enquiries.



INT: 265 m²
 EXT: 55 m²
 TOTAL: 320 m²



Scale in metres. Indicative only. Dimensions are approximate. All information contained herein is gathered from sources we believe to be reliable. However, we cannot guarantee its accuracy and interested persons should rely on their own enquiries.

1 / 17A Sutherland street, Kingscliff

witheriff group. by ljh