

5/74 Pearl Street, Kingscliff

North-Facing Coastal Luxury with Expansive Courtyard Living in the Heart of Kingscliff

Offers Close: Thursday 2nd July, unless sold prior - Submit all offers!

Perfectly positioned just moments from the shoreline and Kingscliff's vibrant village centre, this stunning ground-floor residence in the boutique Akoya complex delivers the ultimate blend of coastal sophistication, low-maintenance living, and everyday convenience.

Designed for those who value lifestyle as much as luxury, this spacious three-bedroom apartment offers an impressive 184sqm on title, including a beautifully oversized north-facing courtyard that feels more like a private garden retreat than apartment living.

Whether you're downsizing without compromise, searching for the perfect lock-up-and-leave escape, or investing in one of the Tweed Coast's most sought-after beachside pockets, this is an opportunity that effortlessly ticks every box.

Coastal Living Designed to Entertain
Bathed in natural northern light, the open-plan layout creates a

3 2 2

FOR SALE

Guide: \$1.6m to \$1.65m - Offers Close:
2nd July

VIEW

Sat 20th Jun @ 11:00AM - 11:30AM

AGENTS

Amy Sanderson
0403 851 003
amysanderson@ljkingscliff.com.au

Erin Nielsen
0414 259 605
erinnielsen@ljkingscliff.com.au

AGENCY

LJ Hooker Kingscliff
(02) 6674 1000

All information contained therein is gathered from relevant third parties sources.
We cannot guarantee or give any warranty about the information provided.
Interested parties must rely solely on their own enquiries.

LJ Hooker

seamless indoor-outdoor connection, with generous living and dining spaces flowing directly onto the expansive courtyard and entertaining area.

The designer kitchen sits at the heart of the home, complete with premium appliances, excellent storage, and an effortless connection to both dining and outdoor living – perfect for relaxed dinners, long lunches, or hosting family and friends after a morning at the beach.

Adding another layer of functionality and style, the living area also features a built-in bar and additional storage niche, making entertaining easy and refined.

Spacious, Private & Thoughtfully Appointed

Accommodation includes three bedrooms, all fitted with built-in wardrobes, while the master suite enjoys a beautifully appointed ensuite.

What You Will Love:

- Ground-floor position with 51sqm north-facing courtyard
- Automatic Awning - Seamlessly combining indoor and outdoor living for effortless entertaining and relaxed coastal living
- North-facing aspect flooded with natural light throughout the day
- Capturing beautiful ocean breezes and a relaxed coastal atmosphere throughout
- Ducted Air throughout
- Easy-care tiling throughout the living zones, complemented by plush carpet in the bedrooms for added comfort and warmth
- Stylish main bathroom with bathtub
- Separate internal laundry
- Secure building with lift access
- Two secure car spaces plus storage
- Residents' swimming pool
- Landscaped gardens and private outdoor entertaining
- Pet Friendly
- No Short Term Stays
- Boutique complex of only 14 residences
- Built in 2020, Akoya continues to stand out for its contemporary coastal design, quality finishes, and unbeatable walkability.

Walk Everywhere. Live Effortlessly.

Leave the car at home and embrace one of Kingscliff's most connected lifestyle locations.

From your doorstep, it's just a short stroll to the beach, local cafés, restaurants, parks, and village shopping, including Woolworths. With the new Tweed Valley Hospital nearby and easy access to the M1, commuting north or south is effortless.

Location highlights include:

- 300m to Kingscliff Beach & Bowls Club
- 300m to Kingscliff Village & Woolworths
- 2 mins to Tweed Valley Hospital
- 3 mins to M1 access
- 15 mins to Gold Coast Airport
- 35 mins to Byron Bay
- 45 mins to Surfers Paradise
- 80 mins to Brisbane CBD

The Lifestyle You've Been Waiting For

Offering space, style, and a relaxed coastal atmosphere in one of Kingscliff's most desirable addresses, this exceptional apartment delivers the perfect balance of luxury and liveability.

Whether it's morning beach walks, afternoon swims, or evenings

entertaining in your private courtyard, every day here feels like a holiday.

Don't miss your chance to make this lifestyle yours – contact Amy Sanderson on 0403 851 003 or Erin Nielsen on 0414 259 605 to arrange your viewing today!

Disclaimer: All information (including but not limited to the property area, floor size, price, photos, address and general property description) is provided as a convenience to you and has been provided to LJ Hooker by third parties. LJ Hooker is unable to definitively confirm whether the information listed is correct or 100% accurate. LJ Hooker does not accept any liability (direct or indirect) for any injury, loss, claim, damage or any incidental or consequential damages, including but not limited to lost profits or savings, arising out of or in any way connected with the use of any information, or any error, omission or defect in the information, contained on the Website. Information contained on the Website should not be relied upon and you should make your own enquiries and seek legal advice in respect of any property on the Website. Prices displayed on the Website are current at the time of issue, but may change.

MORE DETAILS

Property ID	1C5J1D
Property Type	Apartment
Including	Ensuite
	Air Conditioning
	Pool
	Courtyard
	Dishwasher
	Outdoor Entertaining
	Built-in-Robes
	Secure Parking
	Fully Fenced

Amy Sanderson 0403 851 003

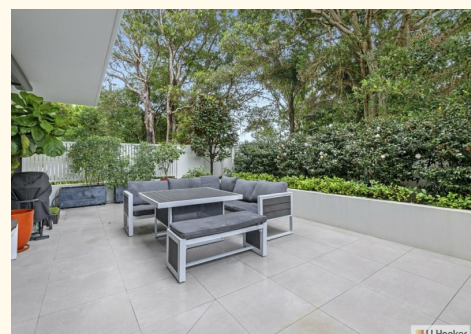
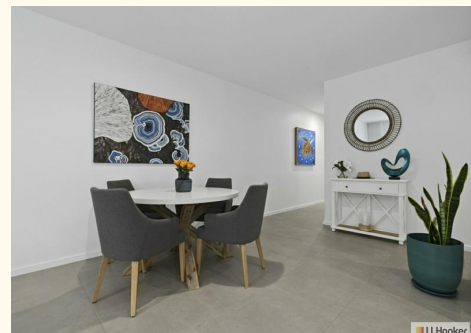
Sales Specialist | amysanderson@ljkingscliff.com.au

Erin Nielsen 0414 259 605

Sales Specialist | erinnielsen@ljkingscliff.com.au

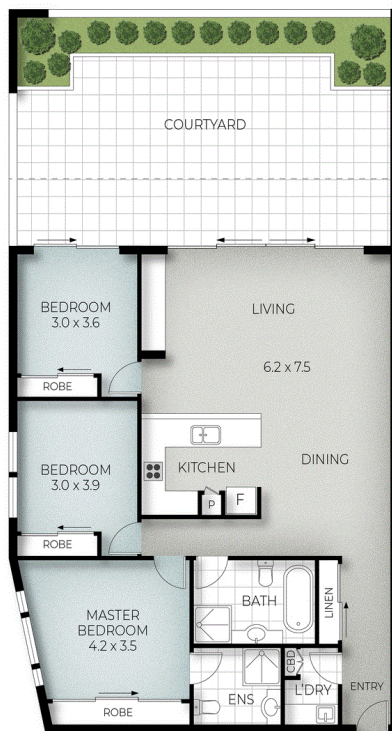
LJ Hooker Kingscliff (02) 6674 1000

Shop 4, 106 Marine Parade, KINGSCLIFF NSW 2487
kingscliff.ljhooker.com.au | office@ljkingscliff.com.au





SECURE BASEMENT
PARKING & STORAGE



Plans are indicative only. Dimensions are approximate. All information contained herein is gathered from sources we believe to be reliable. However, we cannot guarantee its accuracy and interested persons should rely on their own enquiries

5/74 PEARL STREET, KINGSCLIFF

3
 2
 2

Internal: 112 m² | Courtyard: 41 m² | Basement: 27 m² | Total: 180 m²