



5/57 Pearl Street, Kingscliff

Elevated Coastal Living - Roof Terrace Apartment With Ocean & Mountain Views

Experience the ultimate in relaxed coastal living in this perfectly positioned beachside apartment. Just steps from the sand and moments to the vibrant town centre with cafes, boutique shopping and eateries, everything you need is right at your doorstep!


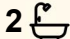
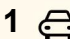
Enjoying a prized north-easterly aspect, this three bed apartment offers spacious open-plan living filled with natural light and flows seamlessly to an alfresco entertaining deck, framed by mature greenery with a twinkle of the ocean beyond.

A standout feature of the home is the private roof terrace, complete with jacuzzi spa, where you can entertain or simply relax and take in stunning ocean views, along with gorgeous sunsets across the hinterland out to Mt Warning.

This is coastal living at its finest, where location, lifestyle and comfort come together in perfect harmony!

Property Features:

All information contained therein is gathered from relevant third parties sources. We cannot guarantee or give any warranty about the information provided. Interested parties must rely solely on their own enquiries.

3  2  1 

FOR SALE

\$1.29m Ocean Views, Kingscliff's Best Value!

VIEW

Sat 20th Jun @ 9:00AM - 9:30AM

AGENTS

Erin Nielsen
0414 259 605
erinnielsen@ljhkingscliff.com.au

Amy Sanderson
0403 851 003
amysanderson@ljhkingscliff.com.au

AGENCY

LJ Hooker Kingscliff
(02) 6674 1000



- Prime location - only 250m to Kingscliff Shopping Village
- Spacious open plan living
- Seamless indoor/outdoor flow
- Roof terrace complete with jacuzzi spa and stunning views
- 3 well appointed bedrooms
- Air-conditioning throughout
- Main bathroom with separate toilet for convenience
- Full size laundry
- Ample storage throughout
- Easy care hybrid plank flooring
- Ceiling fans
- Plantation shutters
- Secure basement parking with additional storage room
- Low outgoings with an active Body Corporate
- Pet friendly building

Where To From Here:

- Easy walk to Kingscliff Shopping Village - Shops, Cafes, Restaurants
- 3 minutes to M1 North and Southbound
- 35 minutes to Byron Bay
- 15 minutes to Gold Coast International Airport
- 2 minutes to new Tweed Valley Hospital
- 80 minutes to Brisbane CBD and Airport

Contact us for further information or to arrange your private viewing.
Erin 0414 259 605 | Amy 0403 851 003

Disclaimer: All information (including but not limited to the property area, floor size, price, photos, address and general property description) is provided as a convenience to you and has been provided to LJ Hooker by third parties. LJ Hooker is unable to definitively confirm whether the information listed is correct or 100% accurate. LJ Hooker does not accept any liability (direct or indirect) for any injury, loss, claim, damage or any incidental or consequential damages, including but not limited to lost profits or savings, arising out of or in any way connected with the use of any information, or any error, omission or defect in the information, contained on the Website. Information contained on the Website should not be relied upon and you should make your own enquiries and seek legal advice in respect of any property on the Website. Prices displayed on the Website are current at the time of issue, but may change.

MORE DETAILS

Property ID 1ABJ1D
Property Type Apartment
Including Ensuite
Air Conditioning
Intercom
Spa
Balcony
Dishwasher
Outdoor Entertaining
Built-in-Robes
Secure Parking
Remote Garage

Erin Nielsen 0414 259 605

Sales Specialist | erinnielsen@ljkingscliff.com.au

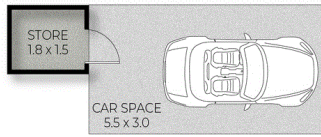
Amy Sanderson 0403 851 003

Sales Specialist | amysanderson@ljkingscliff.com.au

LJ Hooker Kingscliff (02) 6674 1000

Shop 4, 106 Marine Parade, KINGSCLIFF NSW 2487
kingscliff.ljhooker.com.au | office@ljkingscliff.com.au

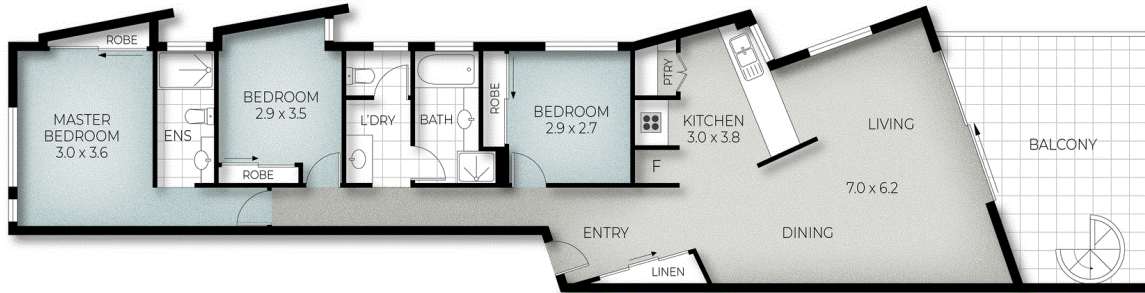




BASEMENT



ROOF



Plans are indicative only. Dimensions are approximate. All information contained herein is gathered from sources we believe to be reliable. However, we cannot guarantee its accuracy and interested persons should rely on their own enquiries

5/57 PEARL STREET, KINGSLIFF

3
 2
 1

Internal: 116 m² | Balcony/Roof: 46 m² | Basement: 20 m² | Total: 182 m²