

Kingaroy, 53 Webster Street

Modern Hillside Living

All the features you would wish for are established here in this modern home. Open plan living/dining with well equipped kitchen opens to the outdoor entertaining area and private backyard. Views filter through over town towards Coolabunia Hill around to the Bunya Mtns. The 4 bedrooms have, ceilings fans, the main has an ensuite and walk in robe and the remaining bedrooms have built in robes. 7 zoned Ducted air conditioning throughout the home makes climate control a breeze.

Economise on your power costs with a 6.5KW back to grid solar system, colourbond fencing with side access, separately fenced vege gardens, rainwater tank and retained flat areas perfect for kids or a shed.

This is a quality home in a great address for families located right behind St Mary's Primary and High School, close the Hospital, easy access to the Bunya highway to move around town.



Disclaimer: All information contained therein is gathered from relevant third parties sources. We cannot guarantee or give any warranty about the information provided. Interested parties must rely solely on their own enquiries.



For Sale
Please Call

View
ljhooker.com.au/7QVAH6K

Contact
Kim Burton
0419 733 066
sales@ljhkingaroy.com.au

LJ Hooker South Burnett
(07) 4162 1620

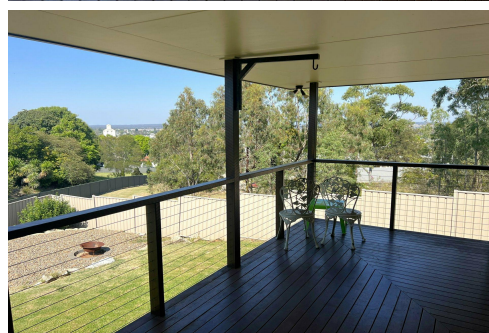
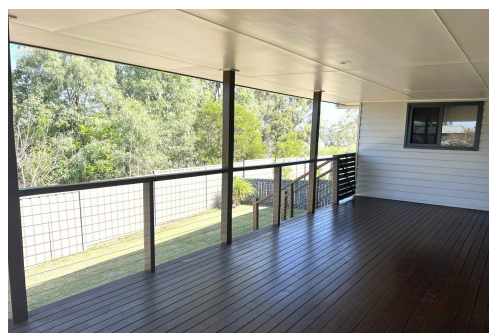
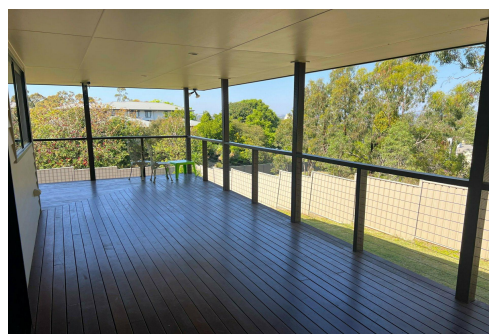
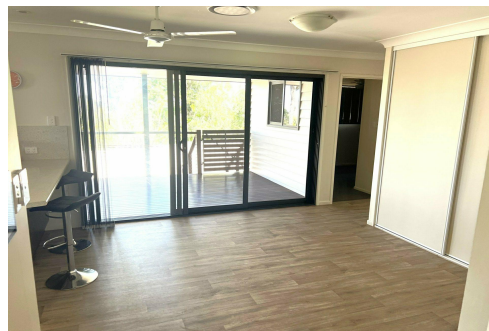
The property is currently tenanted until 5 December 2024 at \$580 p.w.

More About this Property

Property ID	7QVAH6K
Property Type	House
Land Area	1173 m ²
Including	Ensuite Air Conditioning Toilets (2) Deck Built-in-Robes Fully Fenced Solar Panels Water Tank

Kim Burton 0419 733 066
Sales Agent | sales@ljhkingaroy.com.au

LJ Hooker South Burnett (07) 4162 1620
196 Haly Street, KINGAROY QLD 4610
kingaroy.ljhooker.com.au | kingaroy@ljhkingaroy.com.au



LJ Hooker South Burnett
(07) 4162 1620

Disclaimer: All information contained therein is gathered from relevant third parties sources. We cannot guarantee or give any warranty about the information provided. Interested parties must rely solely on their own enquiries.